



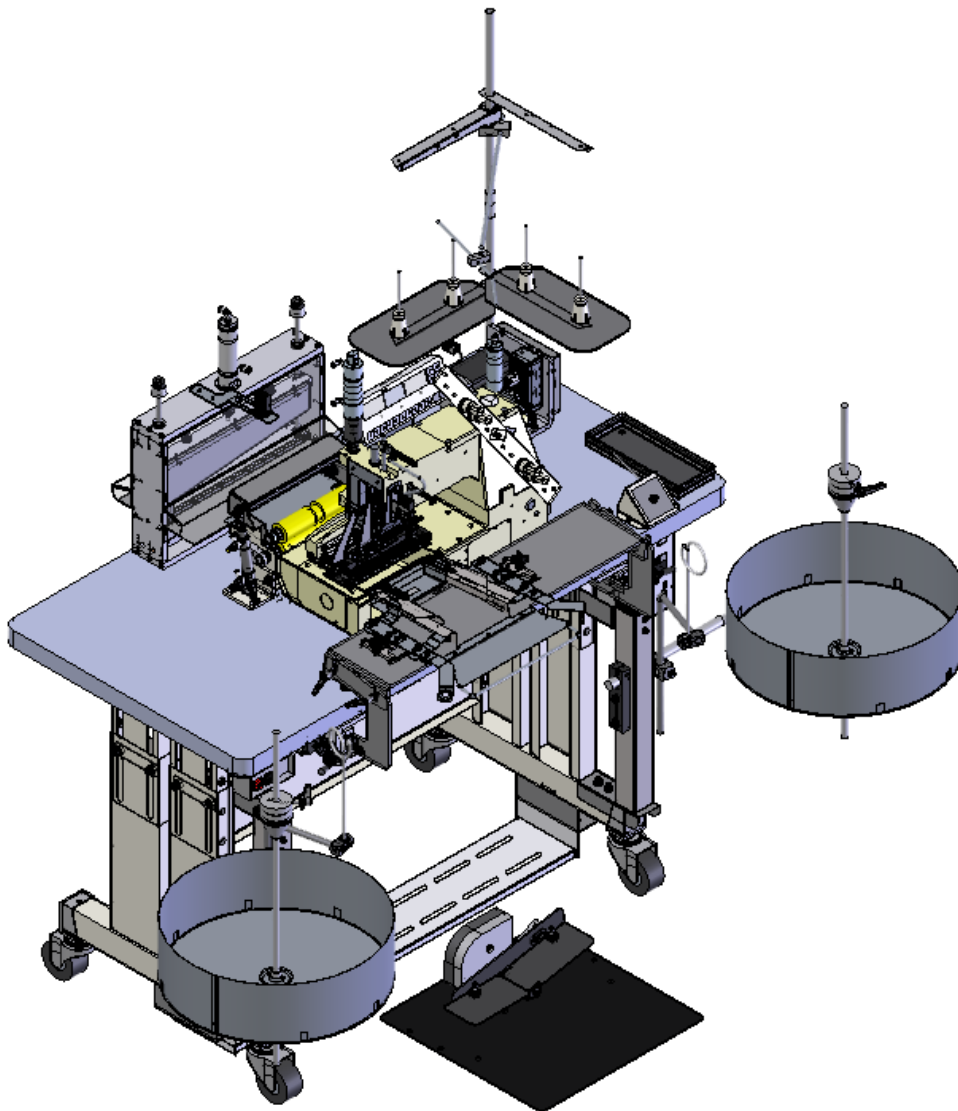
Model 11947BX6

Border Boxing Workstation

Revision 1

Created January 05, 2023

Technical Manual & Parts Lists



Atlanta Attachment Company

362 Industrial Park Drive

Lawrenceville, GA 30046

770-963-7369 • www.atlatt.com

ATLANTA ATTACHMENT COMPANY, INC.

Confidential and Proprietary Information

The materials contained herein are confidential and proprietary information of Atlanta Attachment Company. In addition to any confidentiality and non-disclosure obligations that currently exist between you and Atlanta Attachment Company, your use of these materials serves as an acknowledgment of the confidential and proprietary nature of these materials and your duty not to make any unauthorized use or disclosure of these materials.

All materials contained herein are additionally protected by United States Copyright law and may not be used, disclosed, reproduced, distributed, published or sold without the express written consent of Atlanta Attachment Company, which consent may be withheld in Atlanta Attachment Company's sole discretion. You may not alter or remove any copyright, trademark or other notice from copies of these materials.

Patents & Patents Pending

The sale of this product does not sell or otherwise transfer any license or other rights under any U.S. Patent or other corresponding foreign patent.

This equipment is manufactured under one or more of the following patents:

4,280,421 • 4,432,294 • 4,466,367 • 4,644,883 • 5,134,947 • 5,159,889 • 5,203,270 • 5,373,798 •
5,437,238 • 5,522,332 • 5,524,563 • 5,562,060 • 5,634,418 • 5,647,293 • 5,657,711 • 5,743,202 •
5,865,135 • 5,899,159 • 5,915,319 • 5,918,560 • 5,924,376 • 5,979,345 • 6,035,794 • 6,055,921 •
6,202,579 • 6,279,869 • 6,295,481 • 6,494,225 • 6,523,488 • 6,574,815 • 6,802,271 • 6,834,603 •
6,968,794 • 6,994,043 • 7,543,364 • 7,574,788 • 7,647,876 • 7,735,439

Foreign Patents: 9-520,472 • 0,537,323 • 92,905,522.6 • 96,936,922.2 • 2,076,379 • 2,084,055

Other U.S. and Foreign Patents Pending.

Contents

ATLANTA ATTACHMENT COMPANY, INC.	3
Confidential and Proprietary Information.....	3
Patents & Patents Pending	3
Important Safety Instruction	0
Mandatory Information.....	0
Scope of the Instruction Material.....	0
Intended Use	0
Exclusion of Misuse.....	0
Choice and Qualification of Personnel	1
Training.....	1
Responsibilities	1
A Word to the Operator	2
Safety Equipment on the Machines	2
Damage	2
Faults or Errors	2
Signs on the Machine.....	2
Protective Eyewear	3
Tools	3
Oils, Lubricants, Chemicals	3
No Smoking, Fire, Explosion Hazard	3
Workplace	3
Emergency STOP.....	3
First Aid	3
Important Notices.....	4
Reporting and Fighting Fires	4
Electrical Power Supply.....	4
Delivery of the Machine/Packaging.....	5
Transport Damage.....	5
Interim Storage.....	5
Transporting the Machine	5
Workplace Environment	6
Local Regulations	6
Maintenance	6
General Safety Instructions.....	6
Maintenance, Care, Adjustment.....	6
Waste, Disassembly, Disposal	6

Repair	7
Replacement Parts.....	7
Repair, Electrical.....	7
Ventilation/Hazardous Gases.....	7
Hydraulic and Pneumatic Systems.....	7
General Liability	8
Starting Machine Movements	8
A Word to the End User.....	8
Safety Precautions.....	8
Assembly Drawings & Parts Lists	9
11947BX6 Boxing Operation, Chair Cushions	11
1947003 Folder Bracket Positioning Slide	15
1947046 Guillotine Cutter 10” Capacity	18
1947124 Feed Puller Assembly	20
1947161 Sewing Head, 25N, 1/4GA	21
1947204 Fluted Puller Rollers	24
1947170 Puller Drive Assembly	25
26100B Manual Cut Switch Box	27
1947BX6-PD Pneumatic Drawing	28
1947BX6-WD Wiring Drawing	29
1947BXP6PAR Efka Motor Parameters	30
Atlanta Attachment Company (AAC) Statement of Warranty	31
Manufactured Products	31
Terms and Conditions:	31
What Is Covered	31
What Is Not Covered	31
Declaración de Garantía.....	32
Productos Manufacturados.....	32
Términos y Condiciones:	32
Lo Que Está Garantizado	32
Lo Que No Está Garantizado	32

Important Safety Instruction



This part of the Instruction Material is provided for the safe use of your equipment. It contains important information to help work safely with the unit and describes the dangers inherent in machinery. Some of these dangers are obvious, while others are less evident.

Mandatory Information

All persons operating and/or working on the 1947BX6 Workstation should read and understand all parts of the Safety Instructions. This applies, in particular, for persons who only operate and/or work on the unit occasionally (e.g. for maintenance and repair). Persons who have difficulty reading must receive particularly thorough instruction.

Scope of the Instruction Material

- The Instruction Material comprises:
- Safety information
- Operator Instructions
- Electrical and Pneumatic diagrams

And may also include;

- A list of recommended spare parts
- Instruction Manual(s) for components made by other manufacturers
- The layout and installation diagram containing information for installation

Intended Use

Our machines are designed and built in line with the state of the art and the accepted safety rules. However, all machines may endanger the life and limb of their users and/or third parties and be damaged or cause damage to other property, particularly if they are operated incorrectly or used for purposes other than those specified in the Instruction Manual.

Exclusion of Misuse



Non-conforming uses include, for example, using the equipment for something other than it was designed for, as well as operation without duly installed safety equipment. The risk rests exclusively with the end user.

Conforming use of the machine includes compliance with the technical data, information and regulations in all parts of the complete Instruction Material, as well as compliance with the maintenance regulations. All local safety and accident prevention regulations must also be observed.

Liability

The machine should only be operated when in perfect working order, with due regard for safety and the potential dangers, as well as in accordance with the Instruction Material. Faults and malfunctions capable of impairing safety should be remedied immediately. We cannot accept any liability for personal injury or property damage due to operator errors or non-compliance with the safety instructions contained in this booklet. The risk rests exclusively with the end user.

The Instruction Material should always be kept near the machine so that it is accessible to all concerned.

The local, general, statutory and other binding regulations on accident prevention and environmental protection must also be observed in addition to the Instruction Material. The operating staff must be instructed accordingly. This obligation also includes the handling of dangerous substances and provision/use of personal protective equipment.

The Instruction Material should be supplemented by instructions, including supervisory and notification duties with due regard for special operational features, such as the organization of work, work sequences, the personnel deployed, etc.

The personnel's awareness of the dangers and compliance with the safety regulations should be checked at irregular intervals.

Choice and Qualification of Personnel

Ensure that work on the machine is only carried out by reliable persons who have been appropriately trained for such work - either within the company, by our field staff or at our office - and who have not only been duly appointed and authorized, but are also fully familiar with the local regulations. Work on the machine should only be carried out by skilled personnel, under the management and supervision of a duly qualified engineer.

This not only applies when the machine is used for production, but also for special work associated with its operation (start-up and maintenance), especially when it concerns work on the hydraulic or electrical systems, as well as on the software/serial bus system.

Training

Everyone working on or with the machine should be duly trained and informed with regard to correct use of the safety equipment, the foreseeable dangers which may arise during operation of the machine and the safety precautions to be taken. In addition, the personnel should be instructed to check all safety mechanisms at regular intervals.

Responsibilities

Clearly define exactly who is responsible for operating, setting-up, servicing and repairing the machine. Define the responsibilities of the machine operator and authorize him to refuse any instructions by third parties if they run contrary to the machine's safety. This applies in particular for the operators of machines linked to other equipment. Persons receiving training of any kind may only work on or with the machine under the constant supervision of an experienced operator. Note the minimum age limits permitted by law.

A Word to the Operator

The greatest danger inherent in our machines: is that of fingers, hands or loose clothing being drawn into a machine by live, coasting or rotating tools or assemblies or of being cut by sharp tools or burned by hot elements.

ALWAYS BE CONSCIOUS OF THESE DANGERS!

Safety Equipment on the Machines



All machines are delivered with safety equipment, which shall not be removed or bypassed during operation.

The correct functioning of safety equipment on machines and systems should be checked every day and before every new shift starts, after maintenance and repair work, when starting up for the first time and when restarting (e.g. after prolonged shutdowns).

If safety equipment has to be dismantled for setting-up, maintenance or repair work, such safety equipment shall be replaced and checked immediately upon completing the maintenance or repair work. All protective mechanisms shall be fitted and fully operational whenever the machine is at a standstill or if it has been shut down for a longer period of time.

Damage

If any changes capable of impairing safety are observed in the machine or its mode of operation, such as malfunctions, faults or changes in the machine or tools, appropriate steps must be taken immediately, the machine switched off and a proper lockout tagout procedure followed. The machine should be examined for obvious damage and defects at least once per shift. Damage found shall be immediately remedied by a duly authorized person before resuming operation of machine.

The machine should only be operated when in perfect working order and when all protective mechanisms and safety equipment, such as detachable protective mechanisms, emergency STOP systems, etc. are in place and operational.

Faults or Errors

The machine must be switched off and all moving or rotating parts allowed to come to a standstill and secured against accidental restart before starting to remedy any faults or errors.

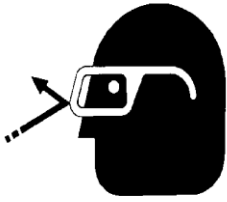
Signs on the Machine

Safety and danger signs on the machine should be observed and checked at regular intervals to ensure that they are complete and undamaged. They should be clearly visible and legible at all times.

Clothing, Jewelry, Protective Equipment

Long loose hair, loose-fitting clothes, gloves and jewelry, including rings, should be avoided in order to avoid injuries due to being caught, drawn in and wound up inside the machine.

Protective Eyewear



Protective eyewear that has been tested by the local authorities should be worn whenever there is a possibility of loose or flying objects or particles such as when cleaning the machine with compressed air.

Tools

Always count the number of tools in your possession before starting work on the machine. This will allow you to check that no tools have been left behind inside the machine. Never leave a tool in the machine while working.

Oils, Lubricants, Chemicals

Note the applicable safety regulations for the product used.

No Smoking, Fire, Explosion Hazard

Smoking and open flame (e.g. welding work) should be prohibited in the production area due to the risk of fire and explosions.

Workplace

A clear working area without any obstructions whatsoever is essential for safe operation of the machine. The floor should be level and clean, without any waste.

The workplace should be well lit, either by the general lighting or by local lights.

Emergency STOP

The emergency STOP buttons bring all machine movements to a standstill. Make sure you know exactly where they are located and how they work. Try them out. Always ensure easy access to the nearest emergency STOP button while working on the machine.

First Aid

1. Keep calm even when injured.
2. Clear the operator from the danger zone. The decision of what to do and whether to seek additional assistance rests entirely with you, particularly if someone has been trapped.
3. Give First Aid. Special courses are offered by such organizations as the employers' liability insurance association. Your colleagues should be able to rely on you and vice versa.
4. Call an ambulance. Do you know the telephone numbers for the ambulance service, police and fire service?

Important Notices

Reporting and Fighting Fires

Read the instructions posted in the factory with regard to reporting fires and the emergency exits. Make sure you know exactly where the fire extinguishers and sprinkler systems are located and how they are operated. Pass on the corresponding information to the firemen when they arrive. Ensure there are enough signs to avoid fire hazards.

The following fire extinguishers may be used:

- Dry powder extinguishers, ABC fire-extinguishing powder.
- Carbon dioxide fire extinguishers to DIN 14461 for electronic components. Great care must be exercised when using carbon dioxide fire extinguishers in confined, badly ventilated rooms (see DIN 14406 and 14270).

Isolate the machine from the power supply if a fire breaks out. Do not use water on burning electrical parts until it is absolutely certain that they have been completely disconnected from the power supply. Burning oils, lubricants, plastics and coatings on the machine can give off gases and vapors that may be harmful to your health.

A qualified person should be consulted to repair the damage after a fire.

Electrical Power Supply



Before undertaking any maintenance or repair work on the machine, switch off the electrical power to the machine at the main source and secure it with a padlock so that it cannot be switched on again without authorization.

In practice, this may mean that the technician, electrician and operator all attach their own padlock to the master switch simultaneously so that they can carry out their work safely. Locking extension plates should be available for multiple locks if required. The primary purpose for a lockout/tagout procedure is to protect workers from injury caused by unexpected energizing or start-up of equipment.

Energy sources (electrical/pneumatic/hydraulic, etc.) for the equipment shall be turned off or disconnected and the switches locked or labeled with a warning tag. It is the responsibility of the employer to establish control procedures. Follow lockout/tagout procedures before, setup and/or any service or maintenance work is performed, including lubrication, cleaning or clearance of jams.

Caution: The machine is still not completely de-energized even when the master switch is off.

- Electricity - The machine is always isolated from the electrical power supply whenever the master switch has been switched off. However, this does not apply for the power supply in the control cabinet, nor for equipment that does not draw its power via the master switch.
- Pneumatic / hydraulic energy - Almost all our machines carry compressed air. In addition to switching off the master switch, the air supply must also be disconnected and the machine checked to ensure it is depressurized before starting any work on the machine; otherwise the machine may execute uncontrolled movements.

- Kinetic energy - Note that some motors or spindles, for example, may continue to run or coast run on after being switched off.
- Potential energy - Individual assemblies may need to be secured if necessary for repair work.

Delivery of the Machine/Packaging

Note any markings on the packaging, such as weights, lifting points and special information. Avoid temperature fluctuations. Condensation may damage the machine.

Transport Damage

The packaging and machine must immediately be examined for signs of damage in transit. Such damage must be reported to the shipper/transporter within the applicable time limits. Contact Atlanta Attachment Company and/or your transport insurer immediately, if signs of damage are visible. Never operate a damaged machine.

Interim Storage

If the machine has to be stored temporarily, it must be oiled or greased and stored in a dry place where it is protected from the weather in order to avoid damage. A corrosion-inhibiting coating should be applied if the machine has to be stored for a longer period of time and additional precautions taken to avoid corrosion.

Transporting the Machine

Disconnect the machine from all external connections and secure any loose assemblies or parts. Never step under a suspended load. When transporting the machine or assemblies in a crate, ensure that the ropes or arms of a forklift truck are positioned as close to the edge of the crate as possible. The center of gravity is not necessarily in the middle of the crate. Note the accident prevention regulations, safety instructions and local regulations governing transport of the machine and its assemblies.

Only use suitable transport vehicles, hoisting gear and load suspension devices that are in perfect working order and of adequate carrying capacity. Transport should only be entrusted to duly qualified personnel.

Never allow the straps to rest against the machine enclosure and never push or pull sensitive parts of the machine. Ensure that the load is always properly secured. Before or immediately after loading the machine, secure it properly and affix corresponding warnings.

All transport guards and lifting devices must be removed before the machine is started up again. Any parts that are to be removed for transport must be carefully refitted and secured before the machine is started up again.

Workplace Environment

Our machines are designed for use in enclosed rooms: Permissible ambient temperature approx. 5 - 40 °C (40 - 104 °F). Malfunctions of the control systems and uncontrolled machine movements may occur at temperatures outside this range.

Protect against climatic influences, such as electrostatic charges, lightning strikes, hail, storm damage, high humidity, salinity of the air in coastal regions.

Protect against influences from the surroundings: no structure-borne vibrations, no grinding dust, or chemical vapors.

Protect against unauthorized access.

Ensure that the machine and accessories are set up in a stable position.

Ensure easy access for operation and maintenance (Instruction Manual and layout diagram); also verify that the floor is strong enough to carry the weight of the machine.

Local Regulations

Particular attention must be paid to local and statutory regulations, etc. when installing machines and the plant (e.g. with regard to the specified escape routes). Note the safety zones in relation to adjacent machines.

Maintenance

General Safety Instructions

The machine shall be switched off, come to a standstill and be secured so that it cannot be switched on again inadvertently before starting any maintenance work whatsoever. Use proper lockout/tagout procedures to secure the machine against inadvertent startup.

Remove any oil, grease, dirt and waste from the machine, particularly from the connections and screws, when starting the maintenance and/or repair work. Do not use any corrosive-cleaning agents. Use lint-free rags.

Retighten all screw connections that have to be loosened for the maintenance and repair work. Any safety mechanisms that have to be dismantled for setting-up, maintenance or repair purposes must be refitted and checked immediately after completing the work.

Maintenance, Care, Adjustment

The activities and intervals specified in the Instruction Manual for carrying out adjustments, maintenance and inspections must be observed and parts replaced as specified.

All hydraulic and pneumatic lines should be examined for leaks, loose connections, rubbing and damage whenever the machine is serviced. Any defects found must be remedied immediately.

Waste, Disassembly, Disposal

Waste products should be cleared from the machine as soon as possible as not to create a fire hazard. Ensure that fuels and operating lubricants, as well as replacement parts are disposed of in a safe and ecologically acceptable manner. Note the local regulations on pollution control.

When scrapping (disassembling) the machine and its assemblies, ensure that these materials are disposed of safely. Either commission a specialist company familiar with the local regulations or note the local regulations when disposing of these materials yourself. Materials should be sorted properly.

Repair

Replacement Parts

We cannot accept any liability whatsoever for damage due to the use of parts made by other manufacturers or due to unqualified repair or modification of the machine.

Repair, Electrical

The power supply must be switched off (master switch off) and secured so that it cannot be switched on again inadvertently before starting any work on live parts.

Those parts of the machine and plant on which inspection, maintenance or repair work is to be carried out must be isolated from the power supply, if specified. The isolated parts must first be checked to determine that they are truly de-energized before being grounded and short-circuited. Adjacent live parts must also be isolated.

The protective measures implemented (e.g. grounding resistance) must be tested before restarting the machine after all assembly or repair work on electric parts.

Signal generators (limit switches) and other electrical parts on the safety mechanisms must not be removed or bypassed. Only use original fuses or circuit overloads with the specified current rating. The machine must be switched off immediately if a fault develops in the electrical power supply.

The electrical equipment of our machines must be checked at regular intervals and any defects found must be remedied immediately.

If it is necessary to carry out work on live parts, a second person should be on hand to operate the emergency OFF switch or master switch with voltage release in the event of an emergency. The working area should be cordoned off and marked by a warning sign. Only use electrically insulated tools.

Ventilation/Hazardous Gases

It is the end users responsibility to ensure adequate ventilation is provided to exhaust any and all noxious or hazardous gases that may be present in the working environment.

Hydraulic and Pneumatic Systems

Work on hydraulic or pneumatic equipment shall only be carried out by persons with training, knowledge and experience of hydraulic systems. Pressure lines shall be depressurized before starting any repair work.

General Liability

Liability for machine damage and personal injury is extinguished completely if any unauthorized conversions or modifications are undertaken. The machine must not be modified, enlarged or converted in any way capable of affecting safety without the manufacturer's prior approval.

Starting Machine Movements

Read the Instruction Manual carefully to establish which keys and functions start machine movements.

A Word to the End User

The end user has sole responsibility to enforce the use of safety procedures and guards on the machine. Any other safety devices or procedures due to local regulations should be should be retrofitted in accordance to these regulations and/or the EC Directive on the safety of machines.

Operator's position must always be readily accessible. Escape routes must always be kept clear and safety areas should be identified.

Safety Precautions

Safety should be a constant concern for everyone. Always be careful when working with this equipment. While normal safety precautions were taken in the design and manufacture of this equipment, there are some potential safety hazards.

Everyone involved with the operation and maintenance of this equipment should read and follow the instructions in this manual.

Operate the equipment only as stated in this manual. Incorrect use could cause damage to the equipment or personal injury.

It is the owner's responsibility to make certain that the operator reads and understands this manual before operating this equipment. It is also the owner's responsibility to make certain that the operator is a qualified and physically able individual, properly trained in the operation of this equipment.

Specific safety warning decals are located on the equipment near the immediate areas of potential hazards. These decals should not be removed or obliterated. Replace them if they become non-readable.

- ALWAYS keep safety shields and covers in place, except for servicing.
- ALWAYS maintain a safe distance from people when operating.
- ALWAYS operate equipment in daylight or with adequate working lights.
- Follow daily and weekly checklists, making sure hoses are tightly secured and bolts are tightened.
- ALWAYS watch and avoid holes or deep depressions.
- ALWAYS wear adequate eye protection when servicing the hydraulic system and battery.
- NEVER operate a poorly maintained machine.
- NEVER allow persons to operate this machine without proper instruction.
- NEVER put hands or feet under any part of the machine while it is running.
- NEVER attempt to make any adjustments or repairs to the machine while running. Repairs or maintenance should be performed by trained personnel only.
- NEVER work under the machine unless it is safely supported with stands, blocks or a hoist and blocks.
- NEVER touch hot parts of machine.

Specifications

• Maximum Sewing Speed (rpm)	2400
• Factory preset speed (rpm)	2000
• Maximum stitch length (spi)	6 – 7
• Maximum needle distance (inch)	6
• Needle System	62 x 57
• Needle size	18 / 100
• Weight of material	Medium
• Maximum presser footlift (inch)	3/8"
• Voltage (v/ph/hz)	220V_1PH_60HZ
• Current (amps)	5
• Motor type	Efka DC
• Air Pressure (psi)	80
• Air Consumption (cfm)	1
• Shipping weight (lbs)	980
• Shipping Dimensions (w / l / h, inch)	60 x 48 x 55

Sewing Capacity

Corded seam position:

- 2" inches minimum to 6" inches maximum width,
- Adjustable at ¼" inch increments, examples: 2" 2 ¼" 2 ½" to 6" etc....

Assembly Drawings & Parts Lists

The materials contained herein are confidential and proprietary information of Atlanta Attachment Company. In addition to any confidentiality and non-disclosure obligations that currently exist between you and Atlanta Attachment Company, your use of these materials serves as an acknowledgment of the confidential and proprietary nature of these materials and your duty not to make any unauthorized use or disclosure of these materials.

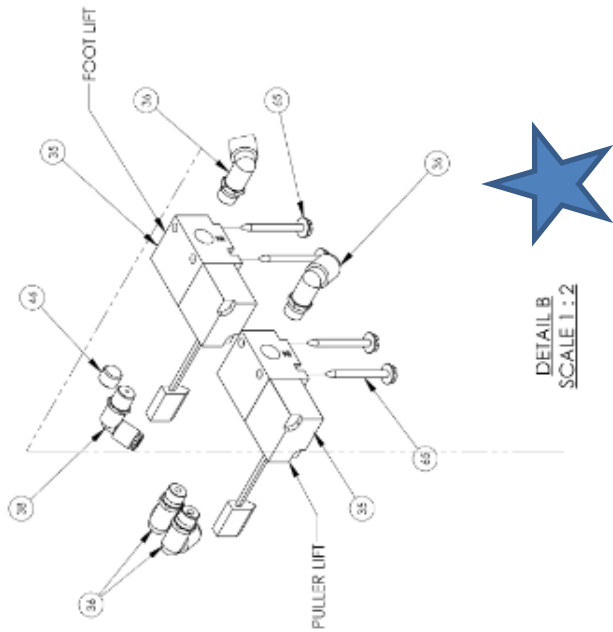


One-Stop Shopping
For Expendable Replacement Parts for AAC & Other Bedding Equipment Suppliers
Toll Free: **1-866-885-5100**
www.atlantapartsdepot.com • sales@atlantapartsdepot.com

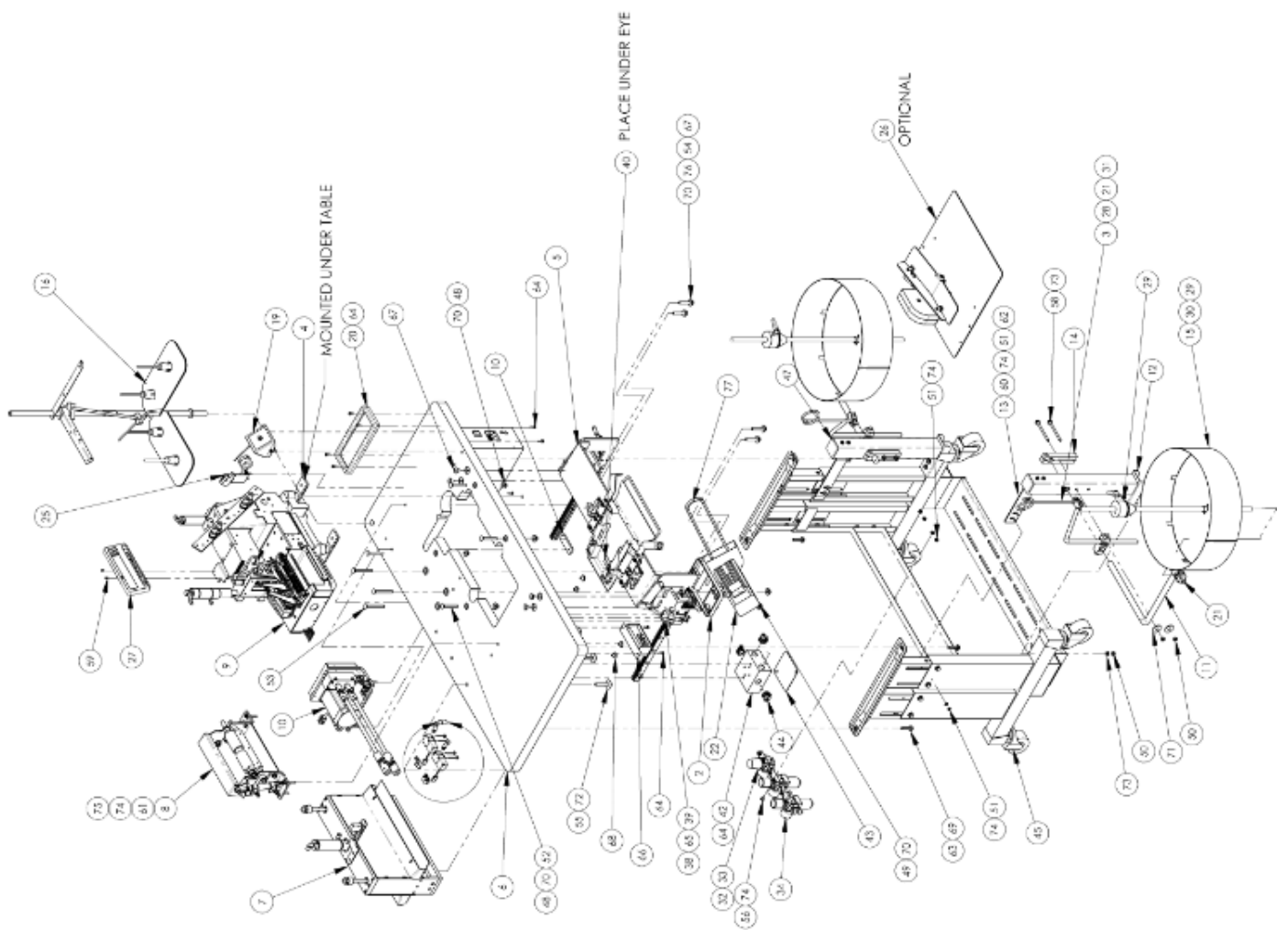
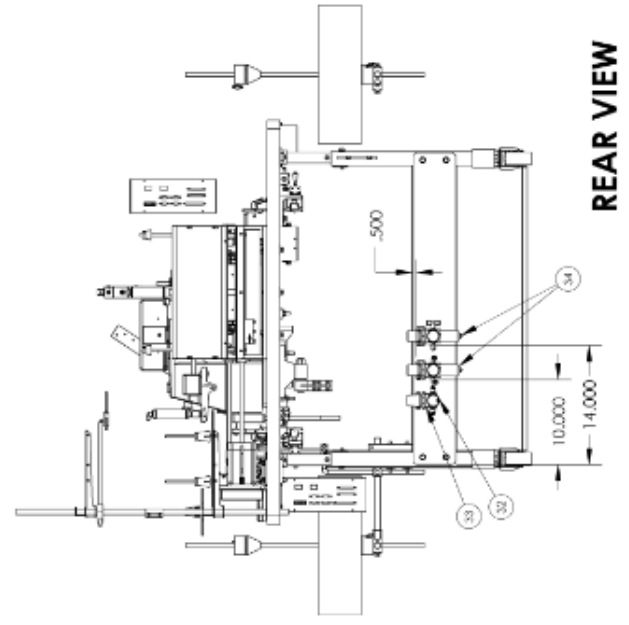
11947BX6 Boxing Operation, Chair Cushions

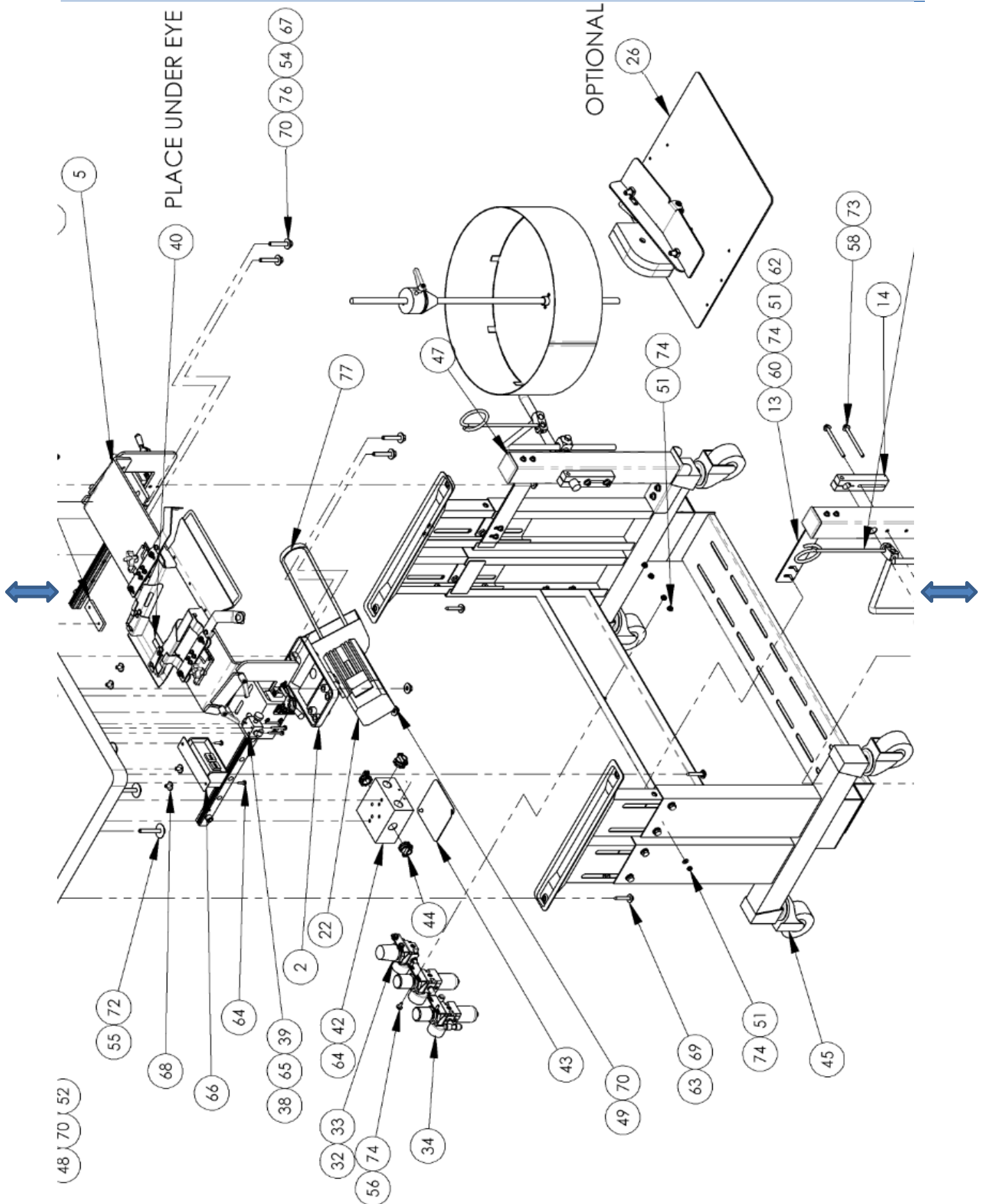
AAC Drawing Number 9005815 Rev.9

SHIFT



DETAIL B
SCALE 1:2





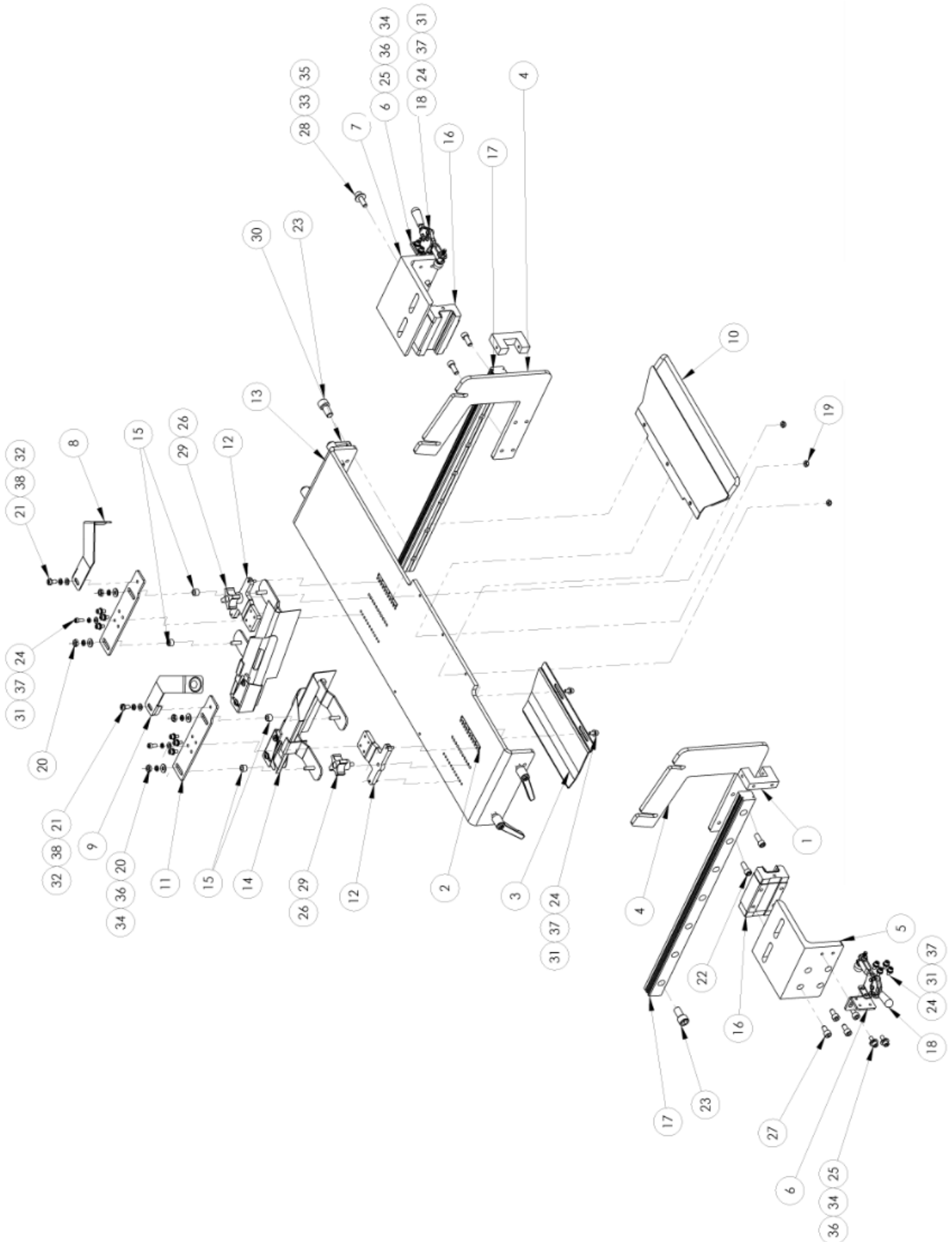
11947BX6 parts list

ITEM NO.	QTY.	PART NUMBER	DESCRIPTION
1	*1	0211-703N	CABLE, I/O EFKA FL, M10 (CHOP)
2	1	1113235	MOUNT KIT, UNDER TABLE
3	2	1347116	RING, TAPE GUIDE
4	4	1389795	SPACER, .25
5	1	1947003	FOLDER BRACKET POSITIONING SLIDE
6	1	1947026	TABLE, TOP
7	1	1947046	GUILLOTINE, 10" BOXING OPERATION
8	1	1947124	FEED PULLER ASSY.
9	1	1947161	SEWING HEAD, 25N, 1/4 GA
10	1	1947170	PULLER DRIVE ASSY, H/D
11	2	1947196	ROD, BENT, CRS, 3/4X12X12
12	2	1947203	CORD STAND 11947BX6
13	2	1947205	BRKT, BRACE
14	2	1947206	HOLDER, ROD, 3/4", SLOT M
15	2	1947257	BALL BEARING SPOOL HOLDER W/ GI
16	1	1947273	4 SPOOL THREAD STAND
17	*AR	1947BX6-PD	PNEUMATIC DIAGRAM
18	*AR	1947BX6-WD	WIRING DIAGRAM
19	1	26100B	MANUAL CUT SWITCH BOX
20	1	26151	TRAY, SMALL TOOL, 3X9
21	4	28201	CROSS BLOCK, 3/4 X 3/4
22	1	4059-AB425S50	MOTOR & STEPPER CONTROL
23	*1	4059-DC08	CABLE, POS1, LSM
24	*1	4059-DC09B	CABLE, STEPPER, 6FT
25	1	4059-DC1	NEEDLE POS EYE ASSY
26	*AR	4059-FP301D	FOOT PEDAL ASSY, EFKA
27	1	4059-V820	EFKA V820 OP PANEL
28	2	780-102	ROD, BENT, 90 DEG
29	2	787-3-032	CONE BEARING ASSY, 1/2 SH
30	2	8732-1792	ROD, STRA, CRS, 1/2X28 1132556135
31	2	A-U	ROD CROSS BLOCK
32	1	AA198-5032	0-60PSI AIR GAGE 1/8NPT
33	1	AA198-503A	REG, 0-125 W/GAUGE & BRKT
34	2	AA198-5102	
35	2	AAE45A24DM	VALVE, AIR, SOLENOID
36	6	AAQME-4-8	QUICK MALE ELBOW, 1/4I
37	2	AAQME-5-4	ELBOW, QUICK MALE, 5/32 X 1/4 NPT
38	4	AAQME-5-8	QUICK MALE ELBOW
39	1	AAVMB43	VALVE, AIR, 4-WAY, W/EXH
40	.083'	EEFE-RR2	TAPE, REFLECTIVE, 1" WIDE

ITEM NO.	QTY.	PART NUMBER	DESCRIPTION
41	*1	FF19510	CABLE, 16X3 AWG INTL
42	1	K-233	BOX, ELECTRICAL, SQUARE
43	1	K-234	COVER, 4IN SQUARE
44	3	K-235	CONNECTOR, ROMEX, 1/2"
45	1	K-4DS	HD T LEG ADJ STAND SHORT
47	2	MM9565K56	PLUG, BLACK, 2" SQ
48	4	NNE5/16-18	NUT, ELASTIC LOCK, 5/16-18
49	3	NNH5/16-18	NUT, HEX, 5/16-18
50	8	NNK1/4-20	NUT, KEP, 1/4-20
51	14	NNK10-32	KEP NUT, 10-32
52	4	SSBK10160	BOLT, CARRAGE, 5/16X2.5
53	3	SSBK10192	BOLT, CARRAGE, 5/16X3
54	4	SSHC10128	SCREW, HEX, 5/16-18 X 2 HHCS
55	3	SSHC10144	SCREW, HEX, 5/16-18X2-1/4
56	6	SSHC98032	10-32X1/2 HEX HD
57	4	SSSC01040	1/4-20 X 5/8" SOC CAP SC
58	4	SSSC01224	1/4-20 X 3-1/2 SOC CAP
59	2	SSSC80016	6-32 X 1/4 SOC CAP SC
60	4	SSSC98040	10-32 X 5/8 SOC CAP
61	4	SSSC98112	SCR, SOC CAP 10-32 X 1-3/4
62	4	SSSC98160	10-32 X 2-1/2 SOC CAP
63	4	SSZH#01096	SCREW, HEX SHEET METAL
64	12	SSZH#10048	SCREW, SHT, METAL HEX 10
65	7	SSZH#6096	SCREW, SHT, METAL HEX 6
66	1	T75C	ON/OFF 1PH SWITCH W/LEADS
67	4	TTIW1/4-20	THREADED INSERT, WOOD, 1/4-20
68	4	TTIW10-32	THREADED INSERT, WOOD
69	4	WWF1/4	WASHER, FLAT, 1/4", COM
70	11	WWF5/16	WASHER, FLAT, 5/16
71	4	WWFE016	WASHER, FENDER, LARGE, 1/4
72	3	WWFE020	WASHER, FENDER, 5/16
73	12	WWF51/4	WASHER, FLAT, SAE, 1/4
74	32	WWF510	WASHER, FLAT, #10, SAE
75	4	WWL10	WASHER, LOCK, #10
76	7	WWL5/16	WASHER, LOCK, 5/16
77	1	ZX3836	V BELT, 3/8 X 36"

1947003 Folder Bracket Positioning Slide

AAC Drawing Number 1947003 Rev.9



1947003 parts list

ITEM NO.	QTY.	PART NUMBER	DESCRIPTION
1	2	1335-310	STOP BLOCK,FRONT
2	1	1947-LAB2	LABEL, SCALE
3	1	1947006	FOLDER SLIDE EXTENSION
4	2	1947058	UNDER TABLE FOLDER MOUNT
5	1	1947059	LEFT GUIDE RAIL SUPPORT BRACKET
6	2	1947060	CLAMP MOUNT LOCK BRACKET
7	1	1947061	RIGHT GUIDE RAIL SUPPORT BRACKET
8	1	1947095	CORD GUIDE BRACKET, LH
9	1	1947096	CORD GUIDE BRACKET, RH
10	1	1947100	FABRIC GUIDE AND APPROACH BOXING FOLDER
11	2	1947261	BRKT, FOLDER MNTG, ADJ
12	2	1947267	LOCATING BRACKET
13	1	1947268	BOXING FOLDER MOUNT BRACKET
14	1	7751AAC	APEX BOXING FOLDER FOR APEX MACHINE
15	4	92415A762	SPACER,7/32IDX3/8ODX1/4L
16	2	MMEGH25CA	LINEAR BEARING
17	2	MMEGR25R0414CM	RAIL,MODIFIED
18	2	MMTC213U	CLAMP,TOGGLE,HOR,HANDLE
19	3	NNE6-32	NUT,ELASTIC LOCK,6-32
20	4	NNH10-32	HEX-NUT 10-32 REG.
21	2	SSPS98024	10-32X3/8 PAN HD SLOT
22	4	SSSC01040	1/4-20 X 5/8" SOC CAP SC
23	2	SSSC25048	3/8-16X3/4 SOC CAP
24	18	SSSC90024	8-32 X 3/8 SOC CAP SC
25	4	SSSC98032	10-32X1/2, SOC CAP
26	2	SSSC98048	10-32 X 3/4 SOC CAP
27	4	SSSCM6X12	M6X12 SOC CAP SCREW
28	4	SSSCM6X20	M6 X 20, SOC CAP
29	2	TTCL1APPK1	PLASTIC KNOB, #10-32
30	4	TTH32415	HANDLE,THDED,1/4-20X7/8
31	18	WWF8	WASHER, FLAT, #8
32	2	WWFM5	WASHER, FLAT, M5 I.D.
33	4	WWFS1/4	WASHER,FLAT,SAE,1/4
34	8	WWFS10	WASHER, FLAT, #10, SAE
35	4	WWL1/4	WASHER,LOCK, 1/4
36	8	WWL10	WASHER,LOCK,#10
37	18	WWL8	WASHER,LOCK,#8
38	2	WWLM5	M5 LOCK WASHER

1947046 parts list

ITEM NO.	QTY.	PART NUMBER	DESCRIPTION
1	2	1947047	PLATE, SIDE MOUNT, 1947046 GUILLOTIN
2	2	1947050	FRONT & REAR GUARD 1947046
3	1	1947051	REAR FLANGE GUARD
4	1	1947052	PLATE, BOTTOM MOUNT, 1947046
5	1	1947062	UPPER BLADE MOUNT
6	1	1947064	CUTTER CLAMP BAR
7	1	1947065	LOWER LINEAR BEARING SUPPORT BAR
8	1	1947066	LOWER BLADE SWIVEL MOUNT
9	1	1947070	BRACKET, CUTTER EYE, 98-3100
10	1	1947073	PLATE, MOUNT UPPER, 1947046
11	2	1947189	SHAFT,STR,60 CASE,3/8 X 12.38
12	1	1947197	REAR FLANGE GUARD
13	1	1947198	BLOCK, SPRING TENSION
14	2	1981-804	BUMPER, LIMIT, DOWN STROKE 1981-800
15	2	273-4-503	WASHER,LEATHER
16	1	97-3163	STUD, SPRING
17	1	98-3107	BLADE, LOWER CUTTER, 98-3107
18	1	98-3109	BLADE, UPPER CUTTER, 12" CAP
19	2	98-3113	SHAFT, CLAMP BAR
20	1	AACM122_5D	CYL. W/MAGNET 1-1/4 BORE X 2.5" STK
21	1	AAF312M	COUPLING, ALIGNMENT 5/16-24, MOD
22	2	AAQME-4-8	QUICK MALE ELBOW, 1/4T
23	2	CCCL4F	COLLAR,1/4,CLAMP
24	2	CCCL6F	CLAMP COLLAR- 3/8
25	1	FFSM312LVQ	EYE,ELECTRIC,10-30VDC
26	2	MM3088A434	WASHER,SHIM,1/4,.047"THK
27	8	MM8410A126	RING,RETAINING,EXT.5/8"

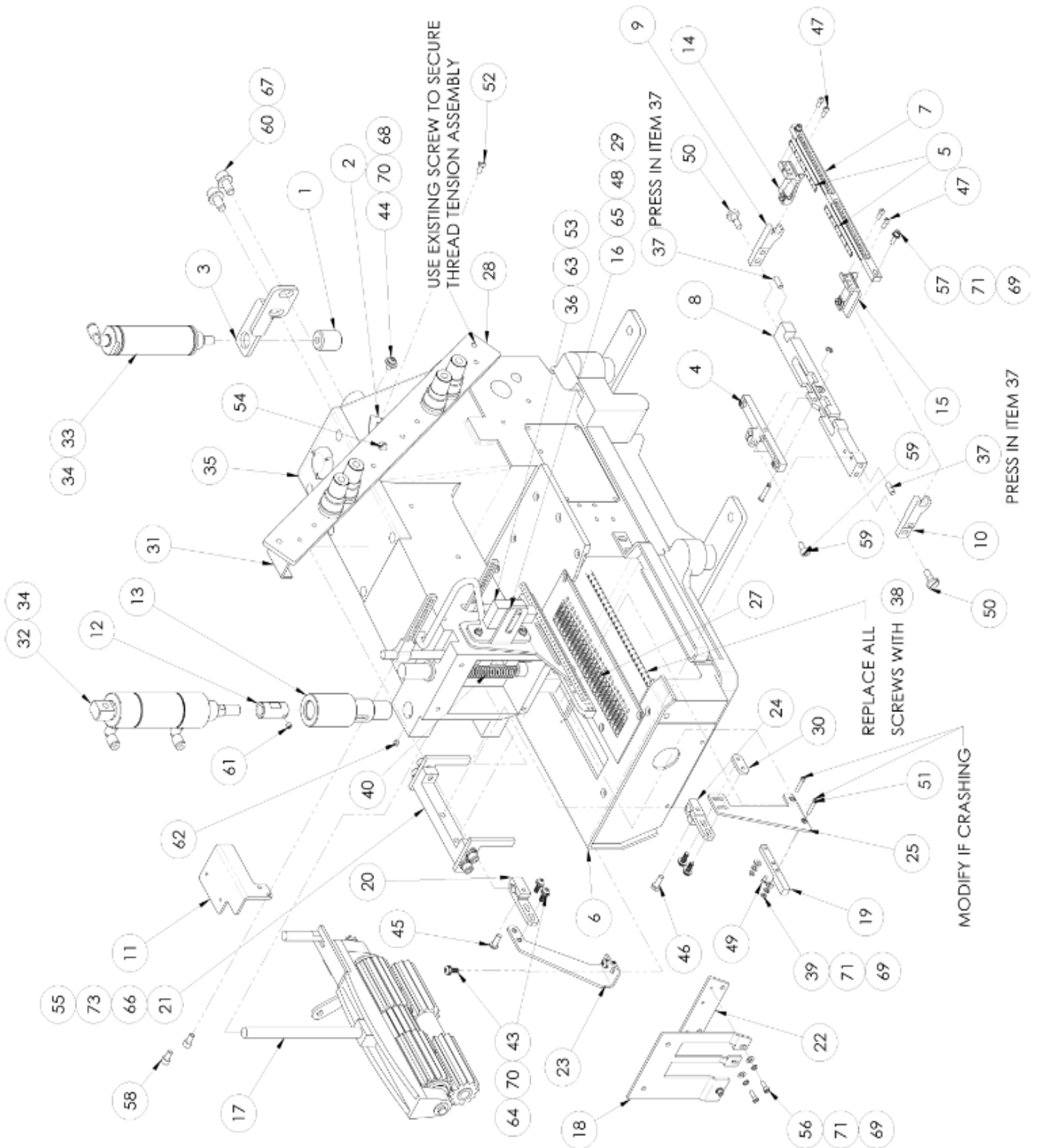
ITEM NO.	QTY.	PART NUMBER	DESCRIPTION
28	2	MM9452K59	O RING,9/16"ID,11/16"OD
29	2	NNJ3/8-24	3/8-24 JAM NUT
30	1	NNJ5/16-24	NUT,JAM,5/16-24
31	1	NNJ7/16-20	NUT,JAM,7/16-20
32	2	RRLC045G10	SPRING,COMP,.045X.48X2
33	1	RRLC092H6	SPRING,COMP,.092X.60X1.5
34	2	SSAS020032	SHOULDER BOLT 5/16 X 1/2L
35	6	SSFC80024	6-32 X 3/8 FLAT CAP
36	6	SSSC01064	1/4-20 X 1 SOC CAP
37	2	SSSC01080	1/4-20 X 1-1/4 SOC CAP
38	2	SSSC01096	1/4-20 X 1-1/2 SOC CAP
39	11	SSSC80032	6-32 X 1/2 SOC CAP SC
40	2	SSSC90040	8-32 X 5/8 SOC CAP SC
41	2	SSSC95032	10-24 X1/2, SOC CAP
42	14	SSSC95048	10-24 X 3/4, SOC CAP
43	2	UUF856-03	BEARING,BRONZE,FL.,314 ID
44	4	UUFLO6	BEARING, LINEAR, 3/8ID
45	3	WWF1/4	WASHER, FLAT, 1/4", COM
46	11	WWFS6	WASHER, FLAT, #6
47	2	WWF8	WASHER, FLAT, #8
48	2	WWFS10	WASHER, FLAT, #10, SAE
49	7	WWL1/4	WASHER,LOCK, 1/4
50	2	WWL10	WASHER,LOCK,#10
51	2	WWL8	WASHER,LOCK,#8
52	1	WWSW3/4	WASHER, SPRING, .75ID 1.06OD,.01
53	1	1947209	ADAPTER BRKT ,FLANGE GUARD

1947124 parts list

ITEM NO.	QTY.	PART NUMBER	DESCRIPTION
1	1	1947125	BRKT, MOUNTING, PULLER
2	1	1947126	ARM,PIVOT, TOP ROLLER
3	1	1947127	SHAFT,FLAT,60C,1/2OD,
4	1	1947128	SHAFT,FLAT,60C,.50 OD,
5	2	1947137	BASE MOUNT, PULLER
6	1	1947140	PLATE, CLOTH
7	1	1947146	ROLLER, URETHANE,LOWER
8	1	1947164	ROLLER, URETHANE,UPPER
9	1	1947168	BLOCK, CLUTCH, PULLER
10	2	AA198RA508	FLOW CONTROL,5/32 X 1/8"
11	1	AAC7DP-.5	CYLINDER,AIR,DA
12	1	AAFBP-11C	BRKT,PIVOT,1/4 BORE
13	1	BBAW-4	BEARING,ROD END,FEMALE
14	4	BBNTA613	BEARING,THRUST,375BORE
15	8	BBTRA613	WASHER,THRUST,STL, .375B
16	4	CC2X568	COLLAR,SET,1/2"
17	2	NNE5/16-18	NUT,ELASTIC LOCK,5/16-18
18	2	NNJ1/4-28	NUT, HEX, JAM, 1/4-28
19	2	SSAS024032	SHULDER BOLT 3/8 X .50L
20	4	SSSC01048	1/4-20 X 3/4" SOC CAP SC
21	1	SSSC05056	1/4-28 X 7/8
22	4	SSSC90024	8-32 X 3/8 SOC CAP SC
23	2	SSSC90040	8-32 X 5/8 SOC CAP SC
24	2	SSSC98024	10-32 X 3/8 SOC CAP
25	4	SSSS98016	SCREW,SKT SET,FLAT POINT
26	6	SSSS98024	10-32X 3/8 SOC SET SC
27	4	WWF8	WASHER, FLAT, #8
28	2	WWFM5	WASHER, FLAT, M5 I.D.
29	6	WWFS1/4	WASHER,FLAT,SAE,1/4
30	5	WWL1/4	WASHER,LOCK, 1/4
31	4	WWL8	WASHER,LOCK,#8
32	2	WWLM5	M5 LOCK WASHER

1947161 Sewing Head, 25N, 1/4GA

AAC Drawing Number 1947161 Rev.6



1947161 parts list

ITEM NO.	QTY.	PART NUMBER	DESCRIPTION
1	1	11200A	BUMPER 5/16-24
2	1	1312092	TENSION MOUNT BRKT
3	1	1312191	BRKT, CYL MOUNT
4	1	17-0300-AM	SHANK, MOD.
5	1	1947-LAB2	LABEL, SCALE
6	1	1947025	FACE PLATE MODIFICATION
7	1	1947032	ADJ. FOOT BAR
8	1	1947033	BASE, ROCKER ARM
9	1	1947035	SIDE MOUNT, LH
10	1	1947036	SIDE MOUNT, RH
11	1	1947041	BRACKET, EFKA 820 CONTROL PANEL
12	1	1947067	COUPLING, PRESSER ROLLER
13	1	1947069	ADAPTOR, CYLINDER MOUNT
14	1	1947183	CORD FOOT ASSY, RH
15	1	1947185	CORD FOOT ASSY, LH
16	1	1947194	BRKT,EYE
17	1	1947204	ROLLER, PULLER MOD.
18	1	1947210	PLATE, COVER FRONT,UPPER
19	1	1947211	PLATE, SLIDE, LH
20	1	1947213	CLAMP,PRESSER FOOT BAR
21	1	1947217	PLATE, GUIDE MNTG
22	1	1947219	PLATE, COVER FRONT
23	1	1947220	BRKT,BRACE PREESER FOOT
24	1	1947221	CLAMP,NEEDLE BAR
25	1	1947230	BRKT, BRACE NEEDLE BAR
26	1	1947243	PLATE, THROAT, 25N, 1/4 GA.
27	1	1947244	FEED DOG, GOLDEN WHEEL MOD.
28	1	1947272	THREAD TENSION ASSY
29	1	1975-412A	PLATE,NUT,4-40,.95CTC
30	1	211-064	PLATE, NUT, 8-32 @ .50 CT
31	1	4300322	TAB, FOOTLIFT
32	1	AAC25DP-1	AIR CYL,1-1/4 BORE,1.STK
33	1	AAC6S-1.5	CYLINDER,AIR,SA
34	3	AAQME-5-8	QUICK MALE ELBOW
35	1	CSL-1225P	SEWING HEAD, CS. FB.
36	1	FFSM312LVQ	EYE,ELECTRIC,10-30VDC
37	2	IID012X032	DOWEL PIN,3/16 X 1/2

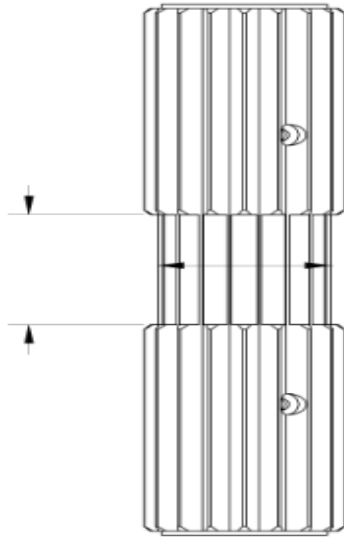
ITEM NO.	QTY.	PART NUMBER	DESCRIPTION
38	1	NNK10-32	KEP NUT, 10-32
39	2	NS6080210SP	NUT, 1/8-44, JUKI DNU 1541
40	1	RRLC062GG13M	SPRING, COMP .063X.5X2 R-12.36, SH-NEEDLE,SIZE 180/24
41	10	SN62X5924	NEEDLE,SIZE 180/24
42	25	SS8080310TP	SCREW,SET,SLOTTED,1/8-44
43	6	SSBC90032	8-32X1/2 BUTTON CAP
44	1	SSBC98024	10-32 X 3/8 BUTTON CAP SC
45	1	SSBC98032	10-32 X 1/2 BUTTON CAP SC
46	1	SSHC98032	10-32X1/2 HEX HD
47	4	SSM001186	SCREW,9/64-40X7MM 1804P YAM
48	2	SSM176	M4 X 25 HEX HEAD
49	1	SSM223S	SCREW, FILL HEAD, 1/8-44X3/16
50	2	SSM35751D	SCREW, SHOULDER .214-32X19/32, .25
51	2	SSM6081810SPM1	SCREW, FILLISTER HEAD 1/8-44X3/16
52	1	SSM84-566	SCREW,PAN HD,SLOTTED
53	2	SSPS70048	4-40 X 3/4 PAN HD SLOTTED
54	1	SSPS98032	10-32X1/2 PAN HD SLOT
55	4	SSSC01040	1/4-20 X 5/8" SOC CAP SC
56	3	SSSC80024	6-32 X 3/8 SOC CAP SC
57	2	SSSC80032	6-32 X 1/2 SOC CAP SC
58	2	SSSC98024	10-32 X 3/8 SOC CAP
59	1	SSSCM5X10	SCREW,SOC CAP,M5-0.8 X 10
60	2	SSSCM8X16	SCREW,SOC CAP,M8X16
61	1	SSSS98012	SCREW,SKT SET
62	1	SSSS98012B	10-32X3/16 SET,BRASS TIP
63	2	WWF4	WASHER, FLAT, #4
64	6	WWF8	WASHER, FLAT, #8
65	2	WWFM4.3	WASHER, FLAT, M4
66	4	WWFM6	WASHER, FLAT, M6, SAE
67	2	WWFM8	WASHER, FLAT, M8 I.D.
68	1	WWFWS10	WASHER, FLAT, #10, SAE
69	7	WWFWS6	WASHER, FLAT, #6
70	3	WWL10	WASHER,LOCK,#10
71	7	WWL6	WASHER,LOCK,#6
72	4	WWL8	WASHER,LOCK,#8
73	4	WWLM6	WASHER,LOCK,M6

1947204 Fluted Puller Rollers

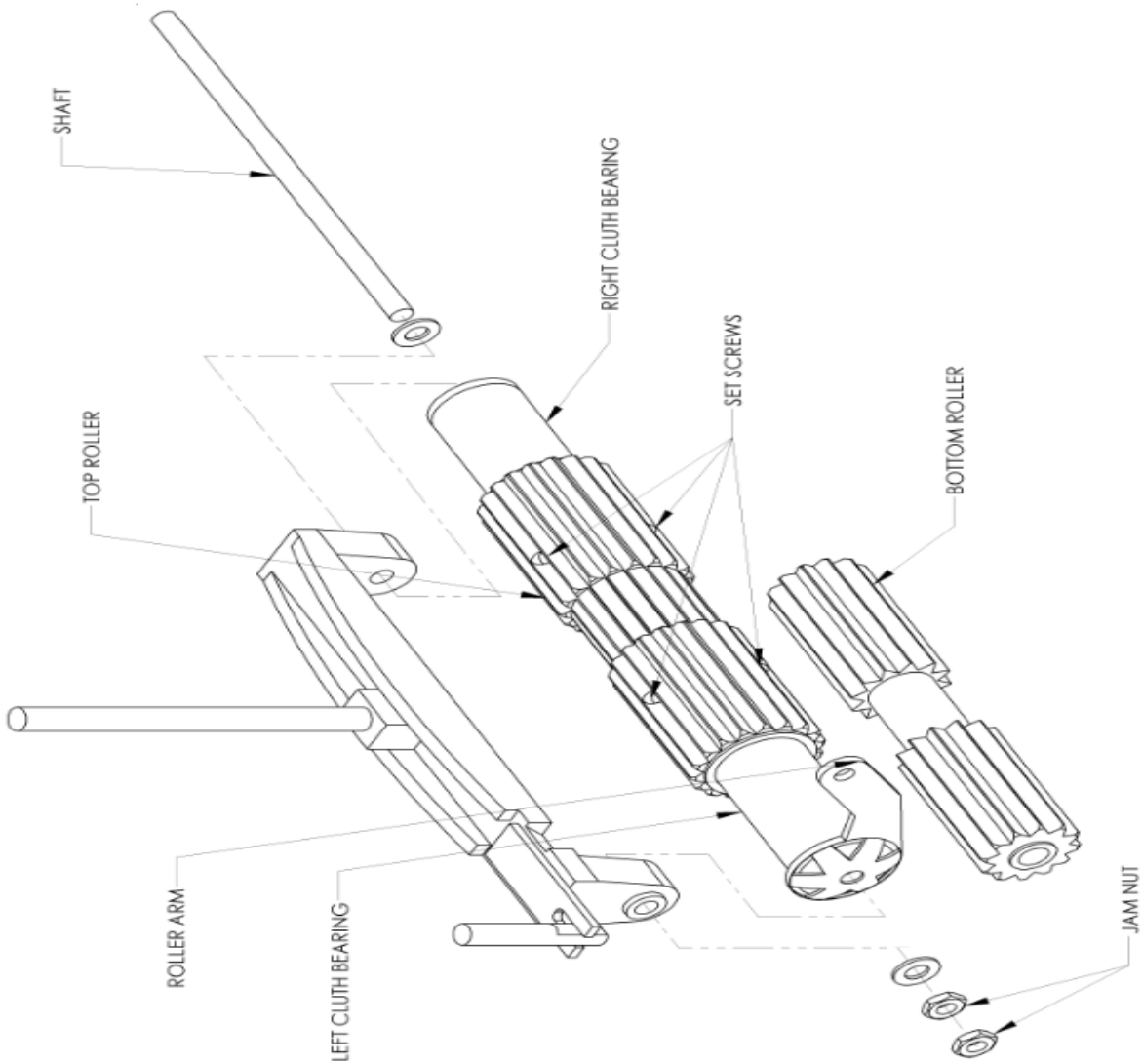
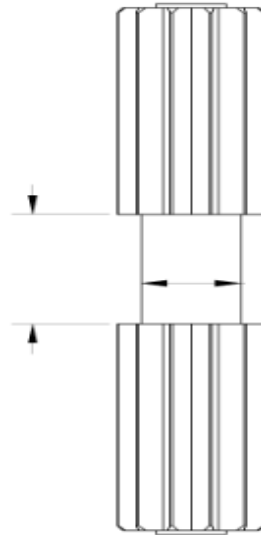
AAC Drawing Number 1947204 Rev 0

TOP AND BOTTOM ROLLER MODIFICATION

TOP ROLLER



BOTTOM ROLLER

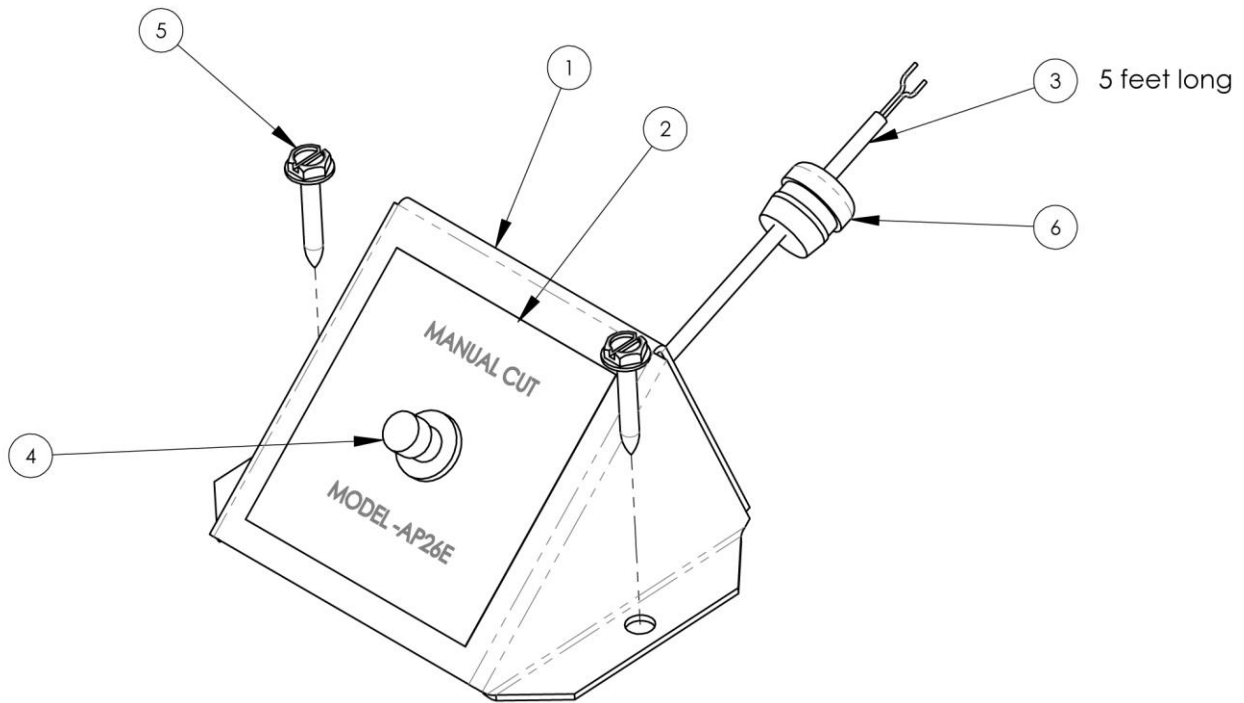


1947170 parts list

ITEM NO.	QTY.	PART NUMBER	DESCRIPTION	ITEM NO.	QTY.	PART NUMBER	DESCRIPTION
1	1	011-020C	STEPPER MOTOR, W/PLUG	24	1	PP28XLB037M	PULLEY, GEAR, 1/5P, 28T, 3/88
2	1	1335M-128	PLATE, BASE	25	1	PP28XLB037M1	PULLEY, GEAR, 1/5P, 28T, 1/2B
3	1	1335M-131	PLATE, NUT, 1/4-20 @ 2.0	26	3	SS8C90024	8-32X3/8 BUTTON CAP
4	2	1947136	SHAFT, FLATTED, .375 OD, 13.5L	27	1	SSFC01160	1/4-20 X 2-1/2 FLAT CAP
5	2	1947169	SPACER, 3/8X1.75X1.25CTC-10-32	28	4	SSFC98048	#10-32 X .75 SHCSF
6	1	1947171	BLOCK, BEARING	29	2	SSHC01176	1/4-20 X 2-3/4 HHCS
7	1	1947172	MOUNT, MOTOR	30	3	SSHC98032	10-32X1/2 HEX HD
8	1	1947174	SHAFT, FLATTED, .60C, .375X3.13L	31	3	SSHC98048	SCREW, HEX CAP #10-32X.75
9	1	1947175	PLATE, CLAMP	32	4	SSSC80024	6-32 X 3/8 SOC CAP SC
10	1	1947176	HINGE SPACER	33	4	SSSC80032	6-32 X 1/2 SOC CAP SC
11	1	1947177	SHAFT, FLATTED, .60C, .375ODX3.5L	34	4	SSSC90040	8-32 X 5/8 SOC CAP SC
12	1	1947179	GUARD, GEAR	35	4	SSSC98056	10-32 X 7/8 SOC CAP
13	1	1947180	COVER, BELT	36	4	SSSC98064	10-32 X 1 SOC CAP
14	2	3524	U JOINT W/SET SCREWS FOR 3/8" SHAFI	37	3	WWF8	WASHER, FLAT, #8
15	2	A-2010U	UNIVERSAL JOINT, 1/2" BORE SINGLE "D"	38	4	WWFM3	FLAT WASHER, M3
16	4	88TT604	BEARING, BRONZE, 385ID	39	3	WWFS1/4	WASHER, FLAT, SAE, 1/4
17	1	CCCL6F	CLAMP COLLAR- 3/8	40	10	WWFS10	WASHER, FLAT, #10, SAE
18	1	GG110XL037	BELT, GEAR, 1/5P, 55T, 3/8W	41	4	WWFS6	WASHER, FLAT, #6
19	1	MM741-3A	HINGE, 3X3, STANLEY	42	3	WWL1/4	WASHER, LOCK, 1/4
20	1	MM8096307	CLAMP	43	14	WWL10	WASHER, LOCK, #10
21	2	MMS20308S-3,	GEAR, 20P, 30T, 14.5PA, 3/8F, 1.5PD, 3/8B	44	8	WWL6	WASHER, LOCK, #6
22	1	NNH1/4-20	NUT, HEX, 1/4-20	45	7	WWL8	WASHER, LOCK, #8
23	4	NNH10-32	HEX-NUT 10-32 REG.				

26100B Manual Cut Switch Box

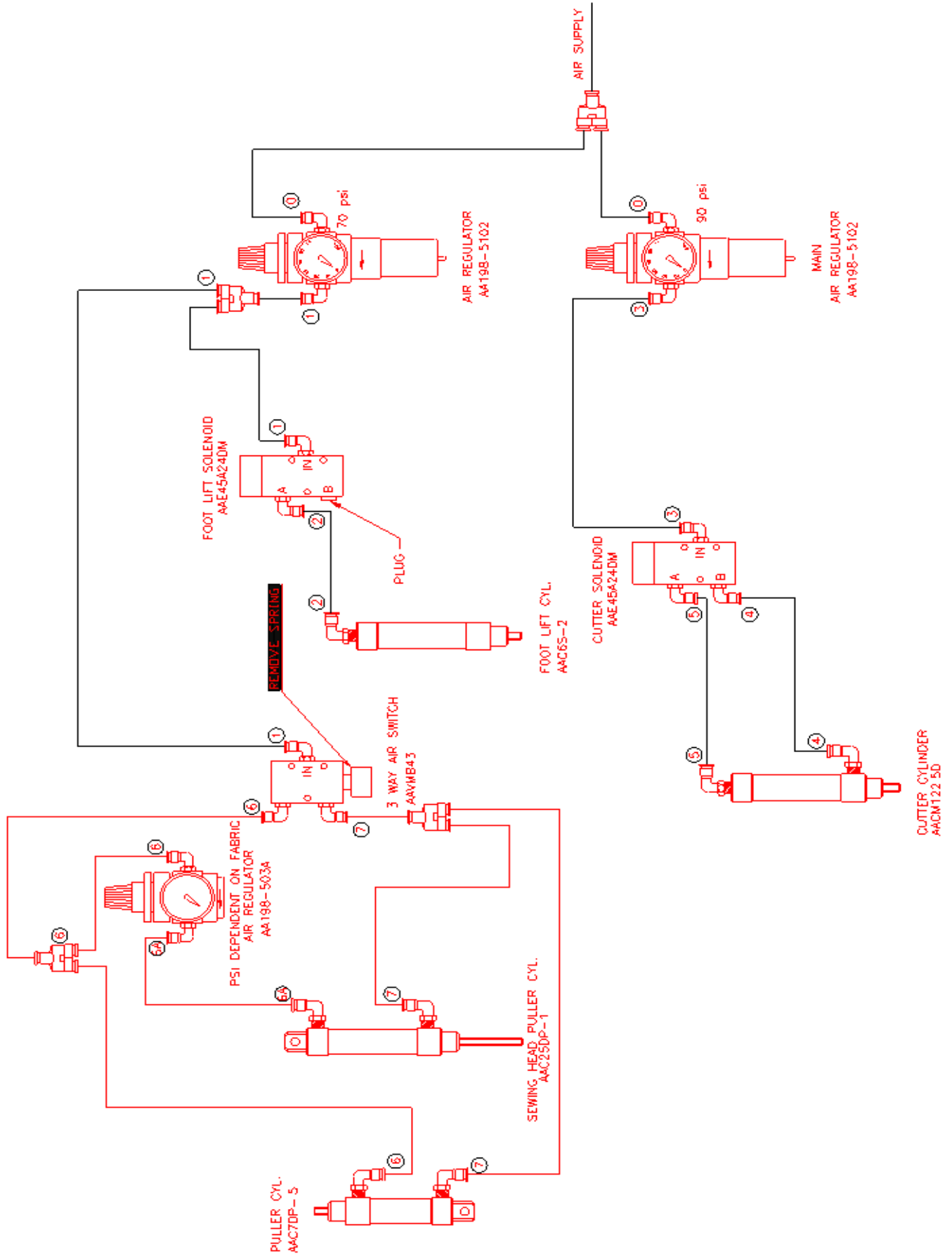
AAC Drawing Number 9006256 Rev.3



NO	QTY	PART #	DESCRIPTION
1	1	26100B-01	BOX,PUSH-BUTTON
2	1	26100LAB1	LABEL
3	5	EE8205	CABLE,2 COND 20 AWG
4	1	FF23F118	SWITCH, PUSHBUTTON
5	2	SSZH#10064	SCREW,SHT.METAL HEX 10
6	1	W17	CABLE GRIP FOR 3-#16 WIRE

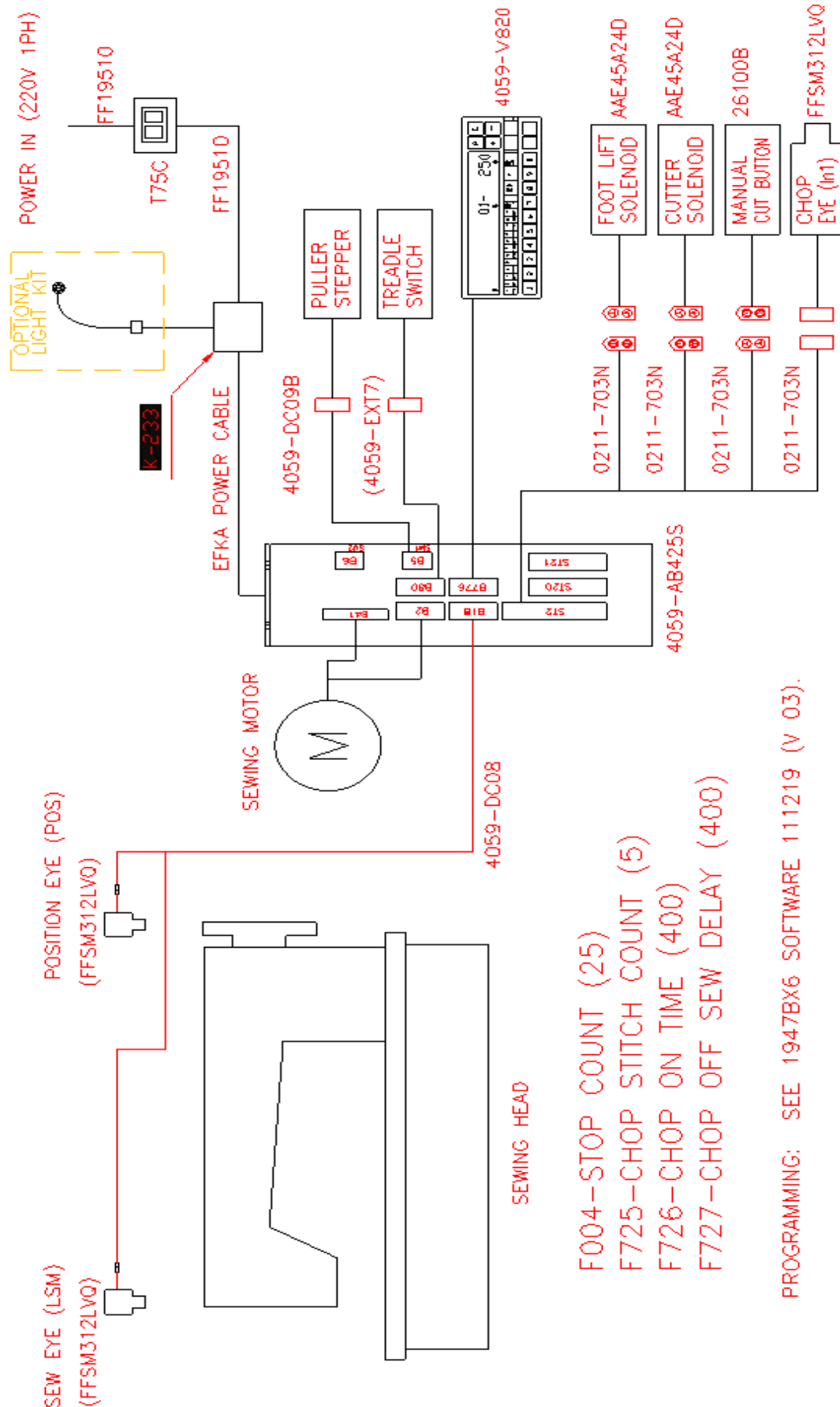
1947BX6-PD Pneumatic Drawing

AAC Drawing Number 125528D Rev 3



1947BX6-WD Wiring Drawing

AAC Drawing Number 125527D Rev 2



Atlanta Attachment Company (AAC) Statement of Warranty

Manufactured Products

Atlanta Attachment Company warrants manufactured products to be free from defects in material and workmanship for a period of eight hundred (800) hours of operation or one hundred (100) days whichever comes first. Atlanta Attachment Company warrants all electrical components of the Serial Bus System to be free from defects in material or workmanship for a period of thirty six (36) months.

Terms and Conditions:

- AAC Limited Warranty becomes effective on the date of shipment.
- AAC Warranty claims may be made by telephone, letter, fax or e-mail. All verbal claims must be confirmed in writing.
- AAC reserves the right to require the return of all claimed defective parts with a completed warranty claim form.
- AAC will, at its option, repair or replace the defective machine and parts upon return to AAC.
- AAC reserves the right to make the final decision on all warranty coverage questions.
- AAC warranty periods as stated are for eight hundred (800) hours or one hundred (100) days whichever comes first.
- AAC guarantees satisfactory operation of the machines on the basis of generally accepted industry standards, contingent upon proper application, installation and maintenance.
- AAC Limited Warranty may not be changed or modified and is not subject to any other warranty expressed or implied by any other agent, dealer, or distributor unless approved in writing by AAC in advance of any claim being filed.

What Is Covered

- Electrical components that are not included within the Serial Bus System that fail due to defects in material or workmanship, which are manufactured by AAC are covered for a period of eight hundred (800) hours.
- Mechanical parts or components that fail due to defects in material or workmanship, which are manufactured by AAC.
- Purchased items (sewing heads, motors, etc.) will be covered by the manufacturer's (OEM) warranty.
- AAC will assist in the procurement and handling of the manufacturer's (OEM) claim.

What Is Not Covered

- Parts that fail due to improper usage, lack of proper maintenance, lubrication and/or modification.
- Damages caused by; improper freight handling, accidents, fire and issues resulting from unauthorized service and/or personnel, improper electrical, plumbing connections.
- Normal wear of machine and parts such as Conveyor belts, "O" rings, gauge parts, cutters, needles, etc.
- Machine adjustments related to sewing applications and/or general machine operation.
- Charges for field service.
- Loss of time, potential revenue, and/or profits.
- Personal injury and/or property damage resulting from the operation of this equipment.

Declaración de Garantía

Productos Manufacturados

Atlanta Attachment Company garantiza que los productos de fabricación son libres de defectos de material y de mano de obra durante un periodo de ochocientos (800) horas de operación o cien (100) días cual llegue primero. Atlanta Attachment Company garantiza que todos los componentes del Serial bus son libres de defectos de material y de mano de obra durante un periodo de treinta y seis (36) meses.

Términos y Condiciones:

- La Garantía Limitada de AAC entra en efecto el día de transporte.
- Reclamos de la Garantía de AAC pueden ser realizados por teléfono, carta, fax o correo electrónico. Todo reclamo verbal tiene que ser confirmado vía escrito.
- AAC reserva el derecho para exigir el retorno de cada pieza defectuosa con un formulario de reclamo de garantía.
- AAC va, según su criterio, reparar o reemplazar las máquinas o piezas defectuosas devueltas para AAC.
- AAC reserva el derecho para tomar la decisión final sobre toda cuestión de garantía.
- Las garantías de AAC tiene una validez de ochocientas (800) horas o cien (100) días cual llega primero.
- AAC garantiza la operación satisfactoria de sus máquinas en base de las normas aceptadas de la industria siempre y cuando se instale use y mantenga de forma apropiada.
- La garantía de AAC no puede ser cambiado o modificado y no está sujeto a cualquier otra garantía implicado por otro agente o distribuidor menos al menos que sea autorizado por AAC antes de cualquier reclamo.

Lo Que Está Garantizado

- Componentes eléctricos que no están incluidos dentro del sistema Serial Bus que fallen por defectos de materiales o de fabricación que han sido manufacturados por AAC son garantizados por un periodo de ochocientas (800) horas.
- Componentes mecánicos que fallen por defectos de materiales o de fabricación que han sido manufacturados por AAC son garantizados por un periodo de ochocientas (800) horas.
- Componentes comprados (Motores, Cabezales,) son protegidos debajo de la garantía del fabricante.
- AAC asistirá con el manejo de todo reclamo de garantía bajo la garantía del fabricante.

Lo Que No Está Garantizado

- Falla de repuestos al raíz de uso incorrecto, falta de mantenimiento, lubricación o modificación.
- Daños ocurridos a raíz de mal transporte, accidentes, incendios o cualquier daño como resultado de servicio por personas no autorizados o instalaciones incorrectas de conexiones eléctricas o neumáticas.
- Desgaste normal de piezas como correas, anillos de goma, cuchillas, agujas, etc.
- Ajustes de la máquina en relación a las aplicaciones de costura y/o la operación en general de la máquina.
- Gastos de Reparaciones fuera de las instalaciones de AAC
- Pérdida de tiempo, ingresos potenciales, y/o ganancias.
- Daños personales y/o daños a la propiedad como resultado de la operación de este equipo.



Atlanta Attachment Company
362 Industrial Park Drive
Lawrenceville, GA 30046
770-963-7369
www.atlatt.com

Printed in the USA