

MAKE 6" PIGTAIL WITH EET8967 PLUG

23218B
BROTHER

SOLENOID VALVES
VIEW FROM BACK OF BOX



ALL WIRES TO THESE WAGOS ARE
18 GA., 1000V HOOK-UP WIRE



WHEN CONNECTING A 025-025 BUNDLE TABLE
ATTACH THE 24VAC POWER LEADS TO TERMINALS
5 & 7 OF J2 THAT ARE LABELED "AC".



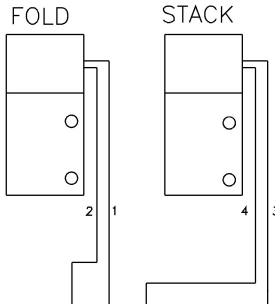
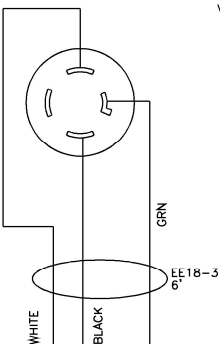
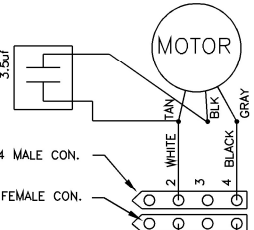
5/32 AIRLINE FEEDS AIR
ELECTRIC SWITCH FROM LINE
8 OF 2211E AND FROM LINE
14 OF 2211, 2213

100K POT.
(REAR VIEW)

ELECTRIC EYE
FFSM312LV

BROWN 10-20VDC (+24VDC)
BLUE 0V
WHITE 150MA MAX SOURCE
BLACK

FF274-224 MALE CON.
FF274-234 FEMALE CON.



EE18-3

WHITE
BLACK

TT5802

ON/OFF SW.

EE8522-10
18 GA BLK

EE8522-10
18 GA BLK

WAGOS

FF264-311 SINGLE (4)
FF264-341 DUAL (2)
FF264-371 END (1)



EE18-2

WHITE

BLACK

2"

2"

2"

3"

5"

15"

14"

FF89F957

TT1818
7 PL

TOP

BOTTOM

FFTX24

FF8524-6

INSIDE CONTROL BOX



025-002A

J2

J1

SET POTS SO ARROWS
POINT AT EACH OTHER

5"

4"

AAV51FMB

THE INFORMATION ON THIS DRAWING IS THE INTELLECTUAL PROPERTY OF ATLANTA ATTACHMENT COMPANY AND ITS AFFILIATES. THIS DRAWING MAY NOT BE COPIED IN ANY FORM WHATSOEVER. THIS INFORMATION MAY NOT BE USED BY ANY UNAUTHORIZED PERSON OR COMPANY. IN ADDITION TO ANY CONFIDENTIALITY AND NON-DISCLOSURE OBLIGATIONS THAT CURRENTLY EXIST BETWEEN YOU AND ATLANTA ATTACHMENT COMPANY, YOUR USE OF THESE MATERIALS SERVES AS AN ACKNOWLEDGMENT OF THE CONFIDENTIAL AND PROPRIETARY NATURE OF THESE MATERIALS AND YOUR DUTY NOT TO MAKE ANY UNAUTHORIZED USE OR DISCLOSURE OF THESE MATERIALS.



500-98

NO.	REVISION	DATE	DR.	CK.
FINISH		TOLERANCE		
PLAIN		SURFACE ✓		
BURR BENCH		DECIMALS		
BLACKOXIDE		.X	±	.030
HEAT TREAT		.XX	±	.015
SAND BLAST		.XXX	±	.005
BUFF		.XXXX	±	.0005
PAINT TAN		FRACTIONS=±1/16		
CHROMATE				
TIMESAVE				

QTY. REQD.	ITEM NO.	DESCRIPTION	PART NO. STOCK SIZE
ATLANTA ATTACHMENT COMPANY			
NAME WIRING DIAGRAM-BROTHER MOTOR			
2nd DES. FOLD-IN HALF STACKER			
MATERIAL NOTED:			
ASSEMBLY .		PART NO. 025-WD4	
DES. BY PBD		DRAWING NO.	
DR. BY KEMAL KORJENIC		125430C	
CK. BY BOB SIDERS		REV 0	
SCALE 1/3		DATE: 12/3/98 MACH CL .	