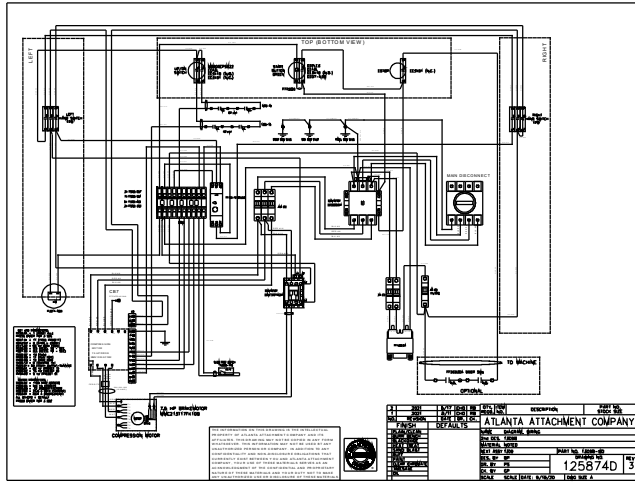


SET VFD PARAMETERS:
 P700.01 = 1 (RESET ALL)
 PRESS ENTER FOR 3 SEC
 P201.01 = 11 (FREQ PRESET1)
 P203.03 = 0 (STOP - COAST)
 P211.00 = 80 Hz (MAX FREQ)
 P220.00 = 0.5 (ACCEL TM - SEC)
 P221.00 = 0.5 (DECEL TM - SEC)
 P400.02 = 15 (RUN)
 P400.08 = 11 (RUN FWD)
 P400.09 = 12 (RUN REV)
 P400.13 = 0 (REVERSE HZ)
 P420.01 = 90 (RELAY OUTPUT-RUNNING)
 P450.01 = 92 Hz (PRESET 1)
 P450.02 = 15 Hz (PRESET 2)
 P450.03 = 9 Hz (PRESET 3)
 MOTOR PARAMETERS
 P320.04 = 1765 RPM (SPEED)
 P320.05 = 5.5 kW (POWER)
 P320.08 = .72 (POWER FACTOR)
 P323.00 = 21.6 A (WITH CURRENT)
 P323.01 = 66.4 A (OVERCURRENT)
 ALL OTHERS = DEFAULT
 PRESS ENTER FOR 3 SEC

THE INFORMATION ON THIS DRAWING IS THE INTELLECTUAL PROPERTY OF ATLANTA ATTACHMENT COMPANY AND ITS AFFILIATES. THIS DRAWING MAY NOT BE COPIED IN ANY FORM WHATSOEVER. THIS INFORMATION MAY NOT BE USED BY ANY UNAUTHORIZED PERSON OR COMPANY. IN ADDITION TO ANY CONFIDENTIALITY AND NON-DISCLOSURE OBLIGATIONS THAT CURRENTLY EXIST BETWEEN YOU AND ATLANTA ATTACHMENT COMPANY, YOUR USE OF THESE MATERIALS SERVES AS AN ACKNOWLEDGMENT OF THE CONFIDENTIAL AND PROPRIETARY NATURE OF THESE MATERIALS AND YOUR DUTY NOT TO MAKE ANY UNAUTHORIZED USE OR DISCLOSURE OF THESE MATERIALS.



2	2021	5/17	CHO	RB	QTY. REQD.	ITEM NO.	DESCRIPTION	PART NO. STOCK SIZE
1	2021	5/11	CHO	RB	ATLANTA ATTACHMENT COMPANY			
NO.	REVISION	DATE	DR.	CK.	NAME DIAGRAM, WIRING			
FINISH					DEFAULTS			
PLAIN/CLEAN					2nd DES. 1309B			
BURR BENCH					MATERIAL NOTED			
BLACKOXIDE					NEXT ASSY 1309			
HEAT TREAT					PART NO. 1309B-WD			
SAND BLAST					DRAWING NO.			
BUFF					125874D			
PAINT					DES. BY BP			
CLEAR CHROMATE					DR. BY PS			
TIMESAVE					CK. BY GP			
OIL					SCALE SCALE DATE: 9/18/20 DWG SIZE A			



NO.	DESCRIPTION	QUANTITY	REMARKS
1	120V AC	1	
2	STOP	1	
3	START	1	
4	REVERSE	1	
5	RELAY	1	
6	RELAY	1	
7	RELAY	1	
8	RELAY	1	
9	RELAY	1	
10	RELAY	1	
11	RELAY	1	
12	RELAY	1	
13	RELAY	1	
14	RELAY	1	
15	RELAY	1	
16	RELAY	1	
17	RELAY	1	
18	RELAY	1	
19	RELAY	1	
20	RELAY	1	
21	RELAY	1	
22	RELAY	1	
23	RELAY	1	
24	RELAY	1	
25	RELAY	1	
26	RELAY	1	
27	RELAY	1	
28	RELAY	1	
29	RELAY	1	
30	RELAY	1	
31	RELAY	1	
32	RELAY	1	
33	RELAY	1	
34	RELAY	1	
35	RELAY	1	
36	RELAY	1	
37	RELAY	1	
38	RELAY	1	
39	RELAY	1	
40	RELAY	1	
41	RELAY	1	
42	RELAY	1	
43	RELAY	1	
44	RELAY	1	
45	RELAY	1	
46	RELAY	1	
47	RELAY	1	
48	RELAY	1	
49	RELAY	1	
50	RELAY	1	
51	RELAY	1	
52	RELAY	1	
53	RELAY	1	
54	RELAY	1	
55	RELAY	1	
56	RELAY	1	
57	RELAY	1	
58	RELAY	1	
59	RELAY	1	
60	RELAY	1	
61	RELAY	1	
62	RELAY	1	
63	RELAY	1	
64	RELAY	1	
65	RELAY	1	
66	RELAY	1	
67	RELAY	1	
68	RELAY	1	
69	RELAY	1	
70	RELAY	1	
71	RELAY	1	
72	RELAY	1	
73	RELAY	1	
74	RELAY	1	
75	RELAY	1	
76	RELAY	1	
77	RELAY	1	
78	RELAY	1	
79	RELAY	1	
80	RELAY	1	
81	RELAY	1	
82	RELAY	1	
83	RELAY	1	
84	RELAY	1	
85	RELAY	1	
86	RELAY	1	
87	RELAY	1	
88	RELAY	1	
89	RELAY	1	
90	RELAY	1	
91	RELAY	1	
92	RELAY	1	
93	RELAY	1	
94	RELAY	1	
95	RELAY	1	
96	RELAY	1	
97	RELAY	1	
98	RELAY	1	
99	RELAY	1	
100	RELAY	1	