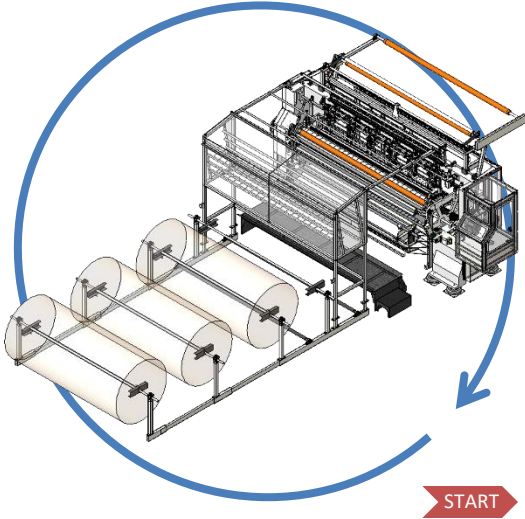
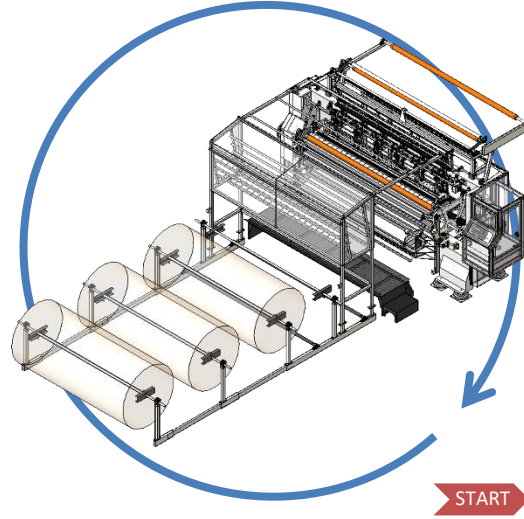


Preventative Maintenance (Shift Schedule)



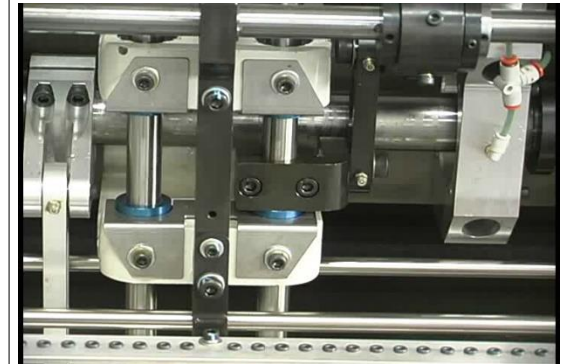
1. Check for unusual noises and or air leaks.
Alert a technician if any.

1392D Quilter

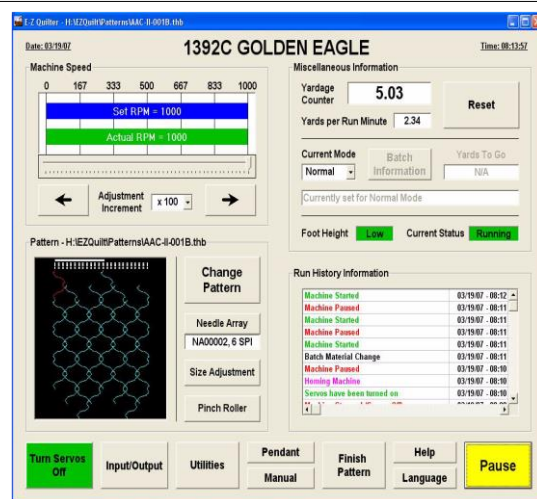


2. General Cleaning of the Machine

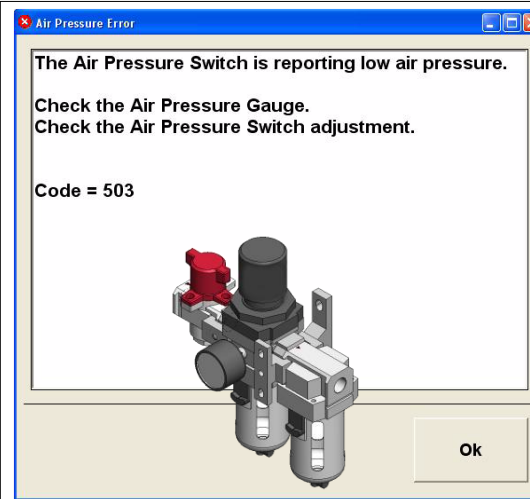
Frequency



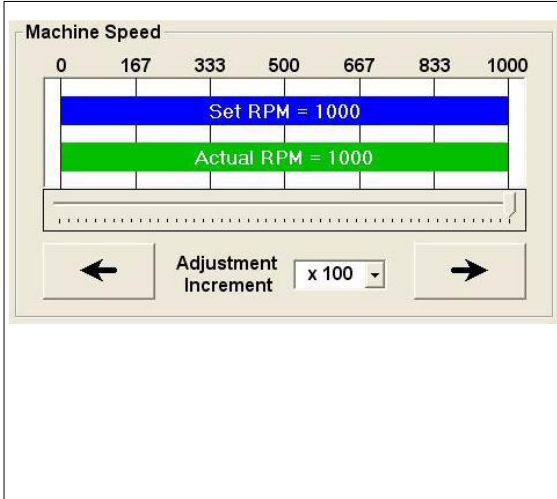
3. Needle bars must be manually lubricated
with oil before and during each shift.



3. Check screen operation, Recalibrate only if
having issues . Procedure in owners manual .



4. Check for Low Pressure and Moisture, alert
Technician if issues are present.



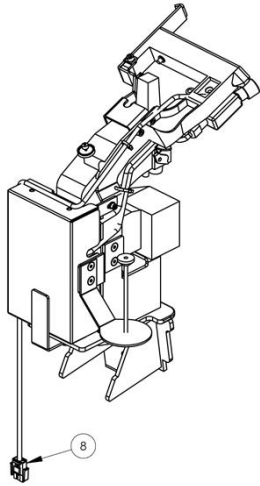
5. Check Speed setting, it must be set within
acceptable range and functions properly.

Preventative Maintenance (Shift Schedule)

1392D Quilter

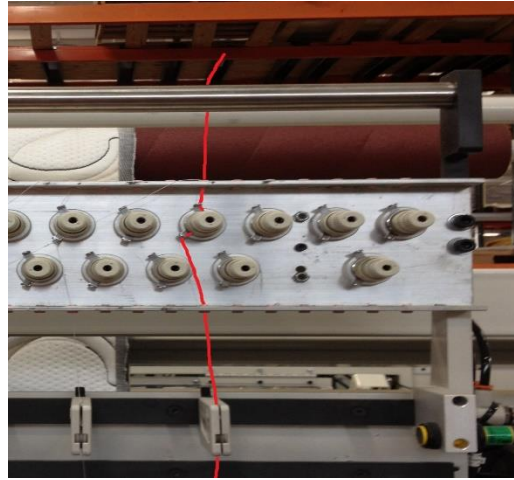
Frequency

START MID END



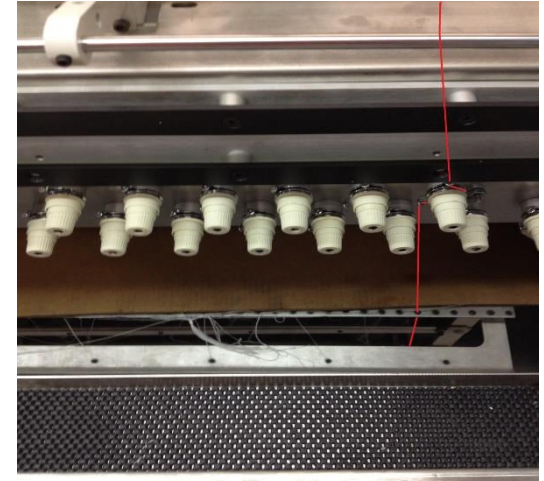
START

6. Manually oil closing/joining sewing machine



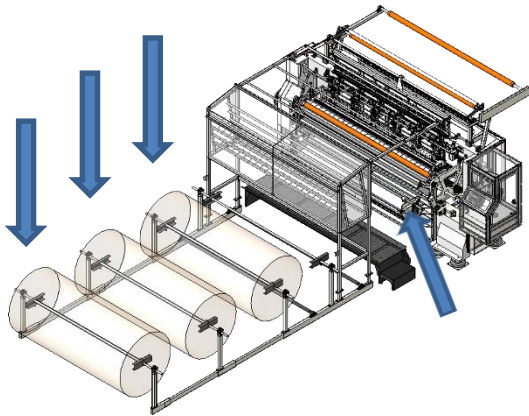
START

6. Clean and Check needle thread path from spools, detectors and to needles. See manual



START

7. Clean and Check looper thread path from spools. See manual



START

8. Check Routing of ticking, backing and fill material before starting machine