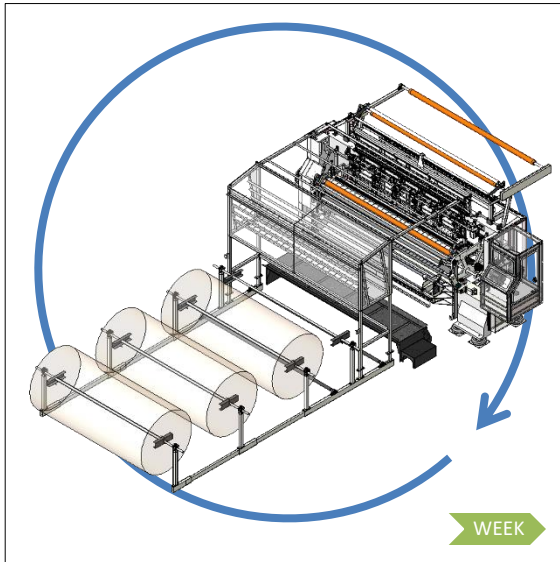
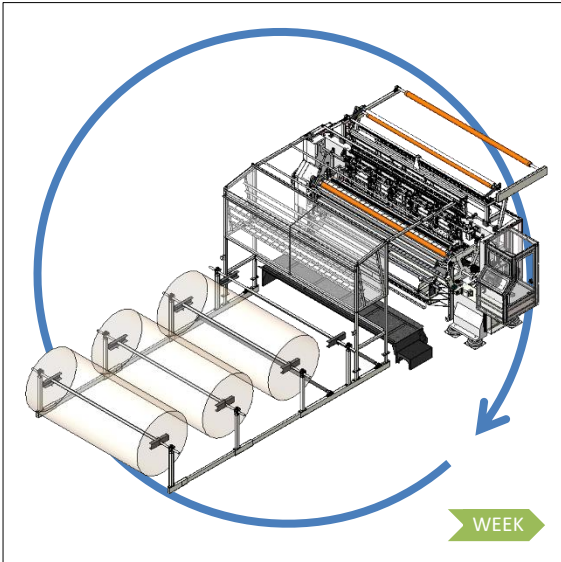


Preventative Maintenance (Mechanic schedule)

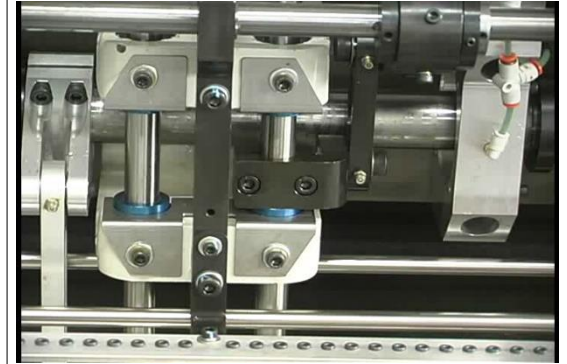


1. Check for unusual noises and or air leaks.



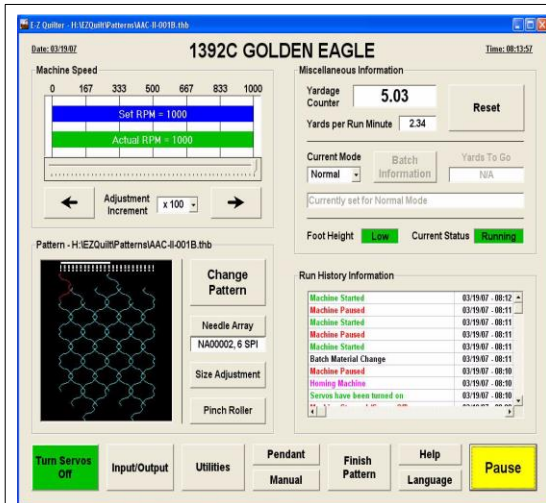
2. General cleaning of the machine.

Frequency ▶ DAY ▶ WEEK ▶ MONTH

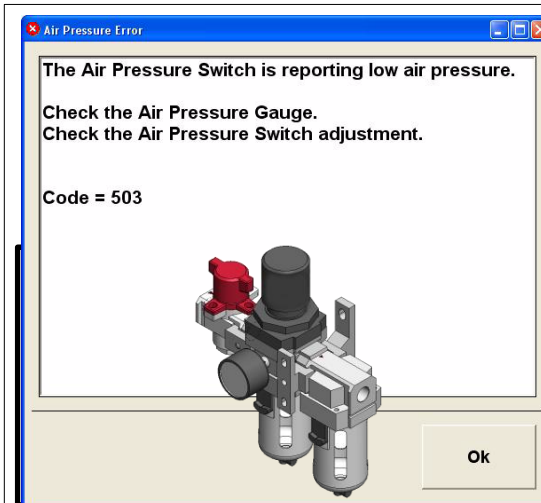


▶ START ▶ caution

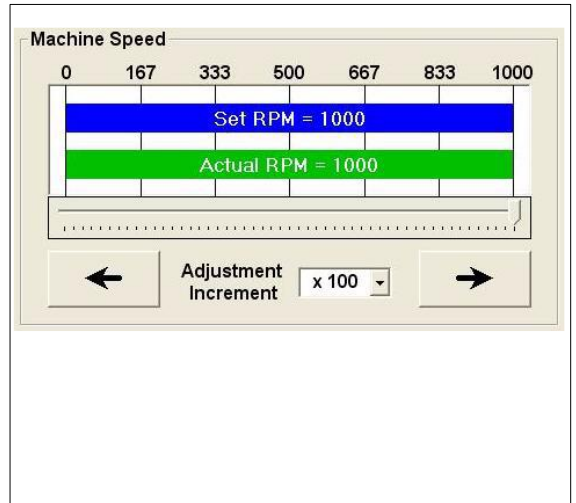
3. Needle bars must be manually lubricated with oil before and during each shift.



4. Check screen operation, Recalibrate only if having issues . Procedure in owners manual .



5. Check for Low air pressure.



6. Check speed setting it must be set within acceptable range and functions properly.

Preventative Maintenance (Mechanic schedule)

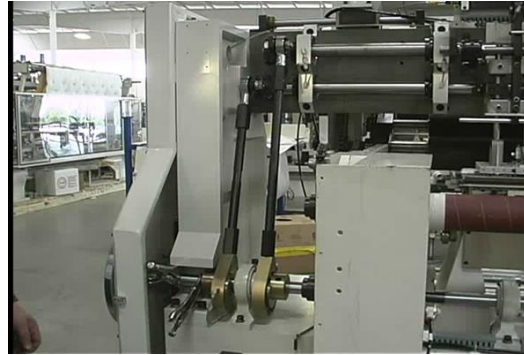
1392D Quilter

Frequency



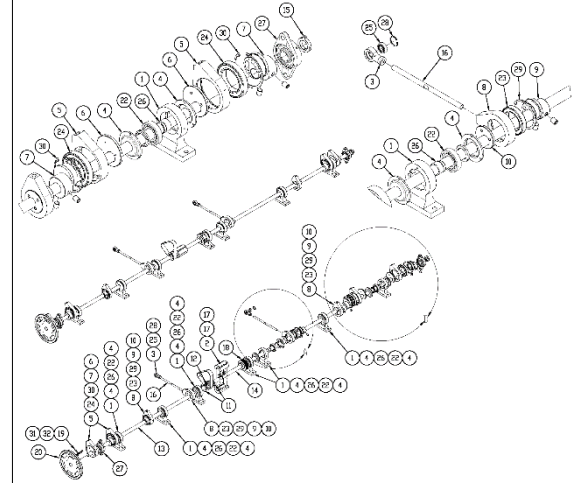
WEEK

7. Check Grease in reservoir, fill as needed to maintain lubrication level.



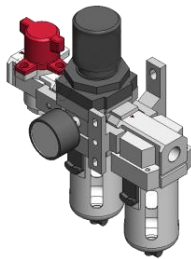
WEEK

7. a. Check "all" lubrication points, eccentrics and main shaft for adequate grease flow



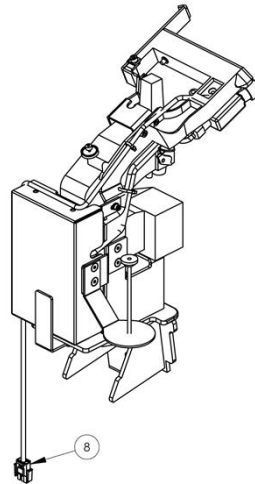
WEEK

7.b. Check "all" lubrication points, eccentrics and main shaft for adequate grease flow



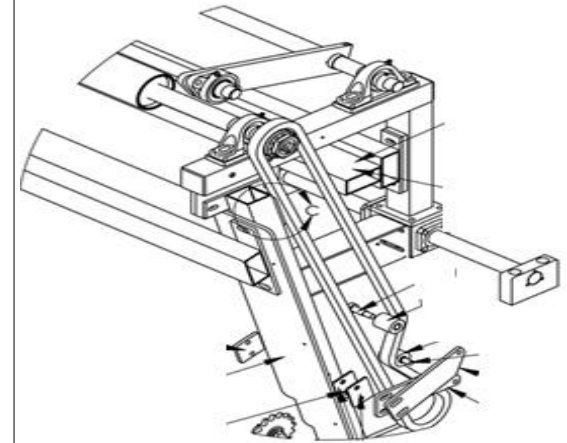
WEEK caution

9. Check for Moisture, Clean and replace filter as needed..



WEEK caution

10. Fill oil reservoir and manually oil closing/joining machine



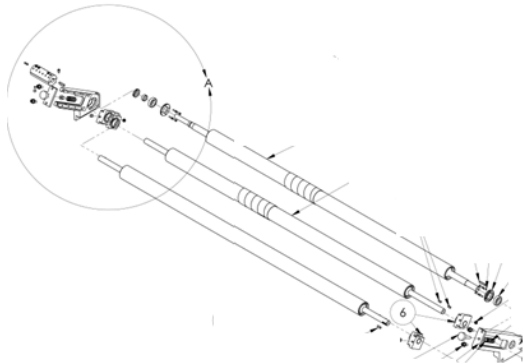
WEEK

11. Check chain tensioner and presence of free movement in tensioner and clean rollers.

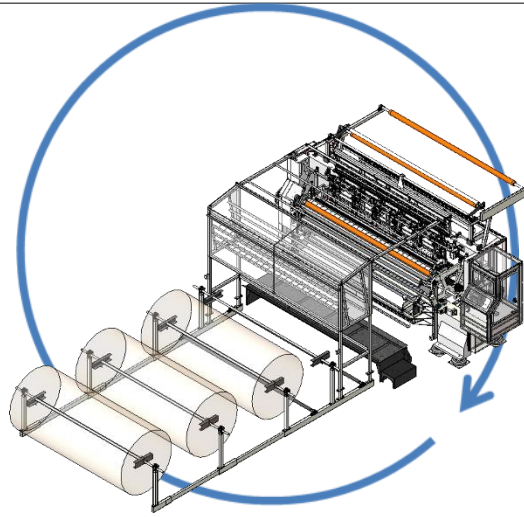
Preventative Maintenance (Mechanic schedule)

1392D Quilter

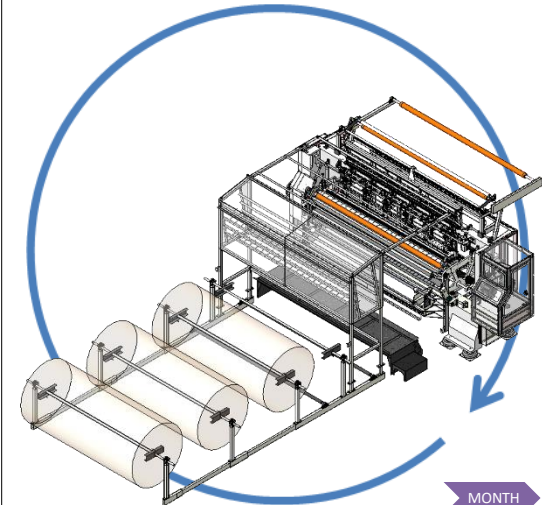
Frequency



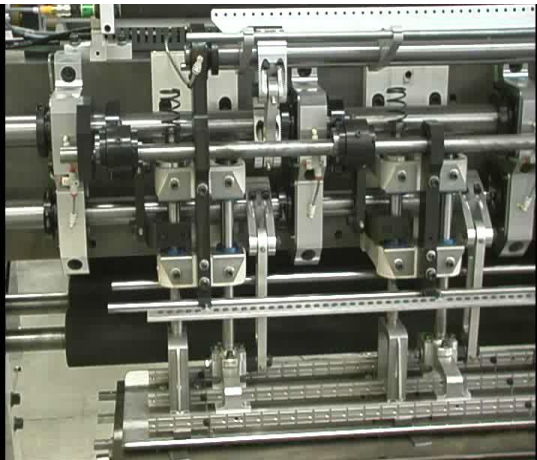
11. Check up/down movement in bearings and slide on rear feed rollers and clean as necessary.



12. Check all drive chains and belts for cracks, tears or breaks. Retention and align if needed



13. Check entire machine for loose hardware.



13. Check throat plate and foot for needle burrs to minimize sewing issues.



Preventative Maintenance (**Mechanic schedule**)

1392D Quilter

Frequency

DAY

WEEK

MONTH

MONTH