

Automatic Hemmer/Seamer

An electronically controlled automatic workstation consisting of a conveyerized hemming system, fold-in-half station, a closing station with automatic backlatch and a programmable indexing stacker.

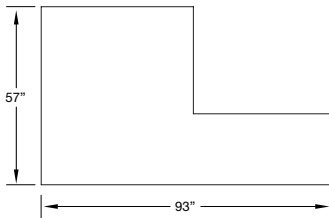
- Patented Gateway Serial Bus Control System
- DC electronic motor
- Combines hemming and closing operations with auto backlatch
- Sews 100% cotton thread max RPM
- Plain hem or imitation collarete style (patented)
- "No tool" adjustments by operator
- Auto indexing stacker
- Computerized soft touch control system
- Adjustable transfer station for closing straight or contour seams
- Unique automatic fold-in-half system allows sleeves to be overlapped during sew cycle, increasing production
- Self-contained waste removal system
- Operator and technician friendly for easy adjustments and maintenance

OPERATION

The operator places parts to an edge guide, initiates the sewing cycle and continues loading. The sleeves are automatically trimmed, folded, hemmed, folded in half, transported to closer, backlatched, closed and stacked. Stacker indexing is accomplished through programming of the number of sleeves in a bundle.

OPTIONS

- **2211-EG1** - Active Edge Guide
- **311-5A** - Top cover 3 needles



Footprint

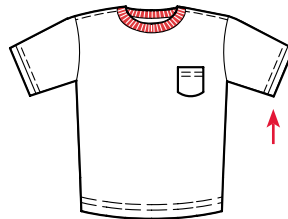
Images may include options.



Hemming



Fold-in-half station and closing stations



Patented Gateway Serial Bus Control System

SPECIFICATIONS

Voltage (v/ph/hz)	220v 1ph
Current (amps)	15
Air pressure (psi)	90
Air consumption (cfm)	25
Shipping weight (lbs)	1950
Shipping dimensions (w/l/h, inch)	106 x 65 x 67

PRODUCTION / PRODUCCIÓN

Sleeves Pieces per Hr	1,120 hemmed & closed
-----------------------	-----------------------

Depending on material, stitch length and size of sleeves

www.atlatt.com • sales@atlatt.com

PATENTS: Our equipment may be covered by one or more patents. Please go to the following web page for an up-to-date patent list: www.atlatt.com/patents.php © 2018 Atlanta Attachment Co. 19151080719

362 Industrial Park Drive
Lawrenceville, GA 30046 USA
+1 (770) 963-7369 • FAX +1 (770) 963-7641



Atlanta Attachment Company

The Company that
Sudden Service
built