

Automatic Long Sleeve Closing Workstation

- Auto start & stop
- Auto bundle return
- Auto backlatch
- Auto thread cutter
- Patented Serial Bus Control System
- Electronic active edge guiding system
- Auto thread saver
- Auto piece counter
- Auto stack
- Short or long sleeves
- Most industrial overlock machines

DESCRIPTION

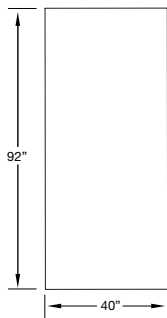
An electronically controlled sleeve closing station with automatic backlatch designed to close jersey or fleece, short or long sleeves. This unit includes electronic active edge guiding system, providing the capability to sew either straight or contoured seams.

OPERATION

The operator folds the sleeve, aligning the hemmed or cuffed end and presents it to the presser foot. A photo cell senses the beginning edge, drops the presser foot and begins the sew cycle with an automatic backlatch. The electronic active edge guiding system controls the sleeve during sewing cycle, while the operator prepares the next sleeve. When the seam is completed, the machine stops, the thread chain is cut and the sleeve is stacked automatically.

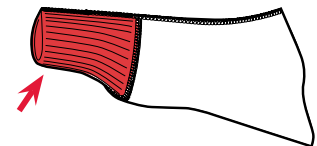
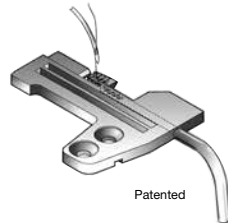
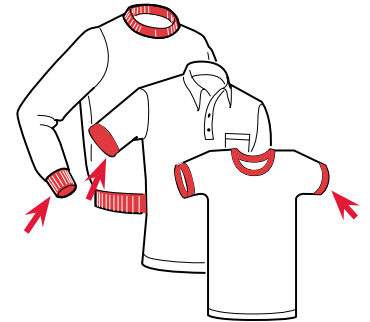
OPTIONS

Indexing bundle table



Footprint

Images may include options.



SPECIFICATIONS

Voltage (v/ph/hz)	220v 1ph
Current (amps)	5
Air pressure (psi)	90
Air consumption (cfm)	13
Shipping weight (lbs)	1200
Shipping dimensions (w/l/h, inch)	96 x 72 x 53

PRODUCTION

Short sleeves per hour	1080
Long fleece sleeves per hour	1260
Long jersey sleeves per hour	720

Depending on material and size of parts

www.atlatt.com • sales@atlatt.com

PATENTS: Our equipment may be covered by one or more patents. Please go to the following web page for an up-to-date patent list: www.atlatt.com/patents.php © 2018 Atlanta Attachment Co. 17168042718

362 Industrial Park Drive
Lawrenceville, GA 30046 USA
+1 (770) 963-7369 • FAX +1 (770) 963-7641



Atlanta Attachment Company

The Company that
Sudden Service
built