

Automatic Cuff Machine

A fully automatic rib knit cuff workstation, utilizing a programmable microprocessor with touch screen for operator input and style recall. The self-diagnostic software prompts the operator or technician to quickly identify a problem.

- 30 Rib knit cuffs cut, folded, and counted per minute
- Tubular or with seams
- Touch screen stores up to 25 styles
- Select the language of your choice
- Fully automatic operation after loading
- Microprocessor controls
- Self-diagnostic software

OPERATION

The rib knit cuff material may be tubular or pre-seamed utilizing the optional sewing module. After loading, the operation is fully automatic. This workstation may be programmable to produce a predetermined style or quantity of cuffs.

OPTIONS

997S - Automatic seamer module

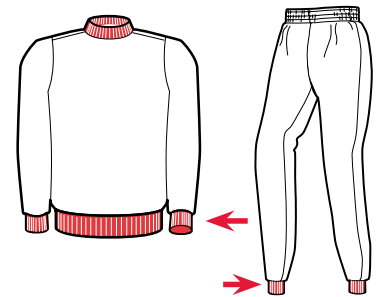
Images may include options.



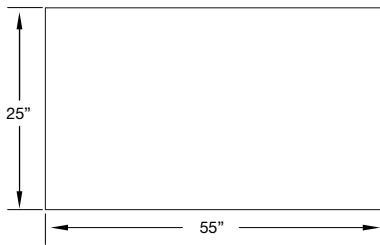
Knit cuffs



Patented Serial Bus Control System



Model 997S



Footprint

SPECIFICATIONS

Voltage (v/ph/hz)	220v 1ph
Current (amps)	5
Air pressure (psi)	90
Air consumption (cfm)	10
Shipping weight (lbs)	1200
Shipping dimensions (w/l/h, inch)	96 x 60 x 65

PRODUCTION

Pieces per hour* / Piezas por hora*	1800
-------------------------------------	------

Depending on material and size of parts

www.atlatt.com • sales@atlatt.com

PATENTS: Our equipment may be covered by one or more patents. Please go to the following web page for an up-to-date patent list: www.atlatt.com/patents.php © 2018 Atlanta Attachment Co. 17168042718

362 Industrial Park Drive
Lawrenceville, GA 30046 USA
+1 (770) 963-7369 • FAX +1 (770) 963-7641



Atlanta Attachment Company

The Company that
Sudden Service
built