

Automatic Clean Finish Elastic Waistband Workstation

- Tunnel Elastic
- Deskills difficult operation
- Auto start-stop
- Auto cut apart
- Automatic fold-in-half stacker
- Parts ready for next operation
- DC electronic motor & microprocessor controls
- Electronic elastic metering
- Automatic piece counter

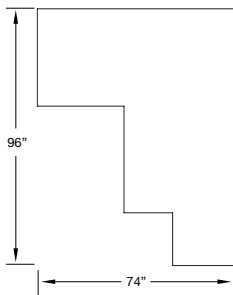
DESCRIPTION

An electro-pneumatic clean finish waistband station consisting of a multi-needle sewing machine, motor, stand, spiral elastic guide, pneumatic knife (for cut apart) and variable speed conveyor with electronic metering device and fold-in-half stacker.

OPERATION

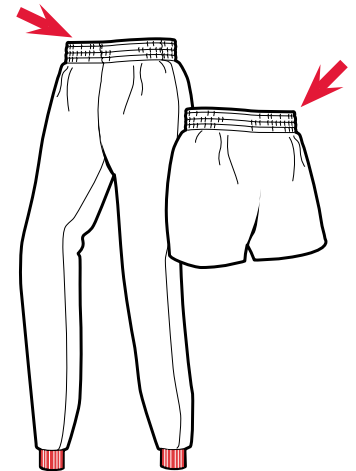
The operator presents the flat garment to the edge guide and into the spiral folder. An electric eye senses the leading edge and starts the sew cycle. The operator holds the garment against the edge guide until completely into the folder. The electric eye senses the trailing edge and stops the sew cycle leaving the proper spacing for the next garment to eliminate waste. The operator then picks up the next garment and repeats. The conveyor will carry pieces to the knife for automatic cut apart and then to the rear fold-in-half stacker. This unit sews and cuts garments apart then folds the garment in half for the side seam operation.

(Special gauge parts are available)



Footprint

Images may include options.



SPECIFICATIONS

Voltage (v/ph/hz)	220v 1ph
Current (amps)	5
Air pressure (psi)	90
Air consumption (cfm)	10
PRODUCTION	
Pieces per hour	600

Depending on material and size of parts

www.atlatt.com • sales@atlatt.com

PATENTS: Our equipment may be covered by one or more patents. Please go to the following web page for an up-to-date patent list: www.atlatt.com/patents.php
© 2018 Atlanta Attachment Co. 17168042718

362 Industrial Park Drive
Lawrenceville, GA 30046 USA
+1 (770) 963-7369 • FAX +1 (770) 963-7641



Atlanta Attachment Company

The Company that
Sudden Service
built