

Automatic Two-Needle Coverstitch Hemmer

Sleeves and Pockets (optional)

- Patented Serial Bus Control System
- Decorative trim may be added to any hem style*
- Electronic sleeve edge guiding system (option)
- Independent sleeve edge trimmer
- Top coverstitch (option)
- Electronic controls with DC drive motor

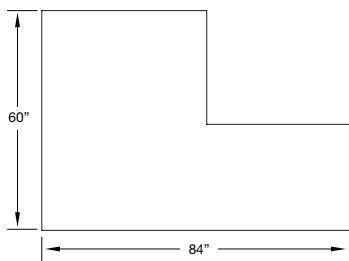
An electronically controlled workstation consisting of a conveyORIZED downturn hemming system with two needle bottom coverstitch sewing head, electronic motor, automatic edge trimmer, cut apart with stacker and self-contained waste disposal. Three needle top coverstitch is optional.

OPERATION

The operator places parts to an edge guide and initiates sewing. The unit will continue sewing as long as parts are placed on the conveyor. The sew cycle will automatically stop if the operator fails to continue the loading process. Thread savings is achieved as a result of the machine not sewing when the distance between the parts becomes excessive.

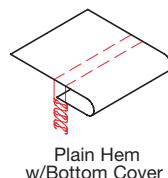
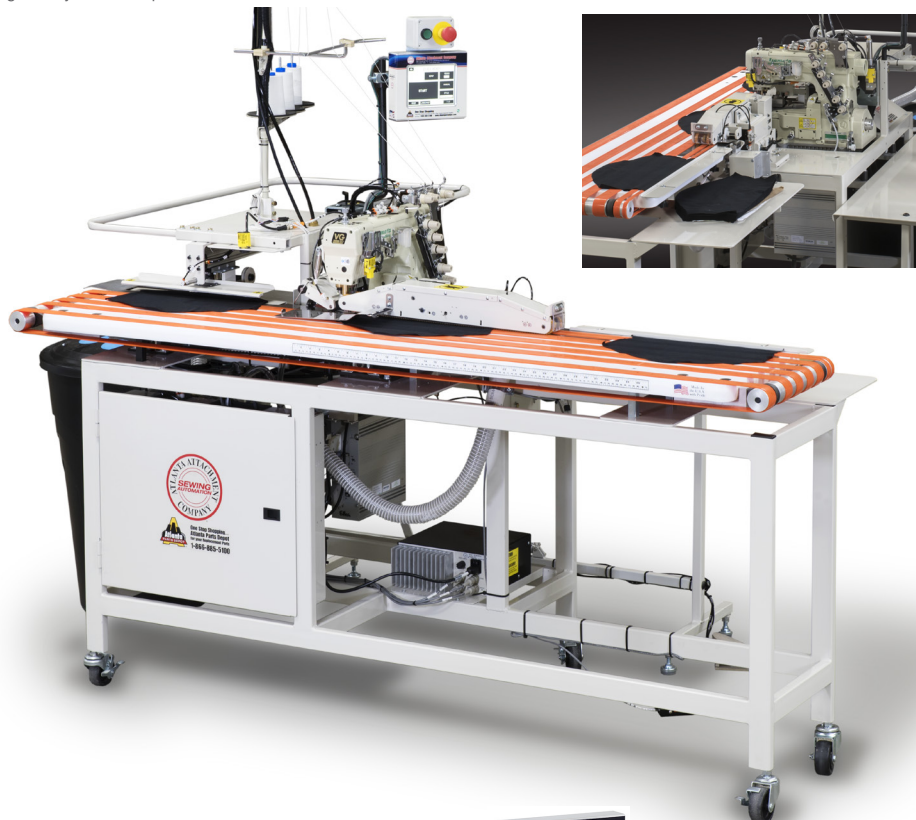
OPTIONS

- **2211-EG2** - Edge guiding system
- **2211PKIT01** - Pocket loading station
- **211-KIT01** - Thread handling
- **311-006B** - Fold in half stacker
- **40-3TC** - Top coverstitch

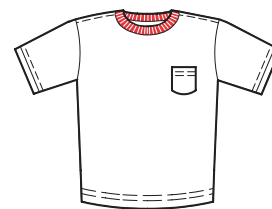
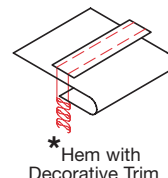


Footprint

Images may include options.



Patented Serial Bus Control System



SPECIFICATIONS

Voltage (v/ph/hz)	220v 1ph
Current (amps)	5
Air pressure (psi)	90
Air consumption (cfm)	19
Shipping weight (lbs)	1300
Shipping dimensions (w/l/h, inch)	106 x 60 x 65

PRODUCTION

Pieces per hour	1950
-----------------	------

Depending on material and size of parts

www.atlatt.com • sales@atlatt.com

PATENTS: Our equipment may be covered by one or more patents. Please go to the following web page for an up-to-date patent list: www.atlatt.com/patents.php
© 2018 Atlanta Attachment Company. 17168042718



Atlanta Attachment Company

The Company that
Sudden Service
built

362 Industrial Park Drive
Lawrenceville, GA 30046 USA
+1 (770) 963-7369 • FAX +1 (770) 963-7641