

Automatic Rib Knit Band Setting

Shirt and Band May Be Tubular or with Side Seams

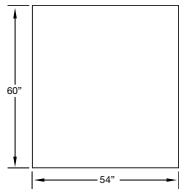
- DC electronic motor & microprocessor controls
- Tandem operation
- Reduces ergonomic risk
- Minimizes fabric waste
- Uniform gathering
- Dual electronic active edge guiding system for band & body
- Automatic stack
- Increased production
- Piece counter
- Yamato AZ8403, Juki, Pegasus

DESCRIPTION

An automatic workstation for sewing circular rib knit bottom bands on sweat shirts. This unit incorporates a cylinder arm overlock sewing head with vacuum thread trimmer, electronic controls, dual electronic active edge guiding system for band and body, and pneumatic expansion rollers with automatic stacker.

OPERATION

The operator folds the circular rib knit piece in half to form a band and places it over the expansion guide rollers. The rollers automatically expand for loading the body. The body is loaded over the rollers and band and a touch of the start sensor expands the rollers to sew position and indexes the parts under the presser foot and sew cycle begins. The operator is free to load a second machine. When the finished seam is sensed, the parts are oversewn a predetermined distance, thread chain is cut, and the part is automatically stacked.

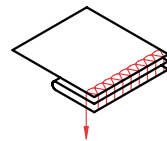
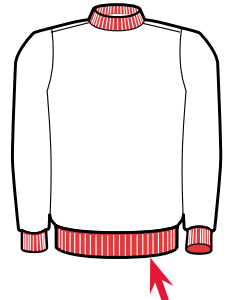


Footprint

Images may include options.



Patented Serial Bus Control System



SPECIFICATIONS

Voltage (v/ph/hz)	220v 1ph
Current (amps)	6
Air pressure (psi)	90
Air consumption (cfm)	23
Shipping weight (lbs)	890
Shipping dimensions (w/l/h, inch)	60 x 54 x 60
PRODUCTION	
Pieces per hour	510

Depending on material and size of parts

www.atlatt.com • sales@atlatt.com

PATENTS: Our equipment may be covered by one or more patents. Please go to the following web page for an up-to-date patent list: www.atlatt.com/patents.php
© 2018 Atlanta Attachment Co. 17168042718

362 Industrial Park Drive
Lawrenceville, GA 30046 USA
+1 (770) 963-7369 • FAX +1 (770) 963-7641



Atlanta Attachment Company

The Company that
Sudden Service
built