

Images may include options.

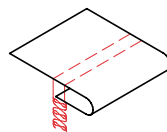
Air Guided Hemmer

Shirts may be tubular or with side seams

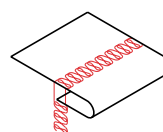
- Adjustable from 1/2" (12.7mm.) to 1" (25.4 mm.)
- Requires a electronic motor controller with proper signaling capabilities.
- This unit only adds one inch (25.4 mm.) to the front of any Cylinder bed cover stitch type machine.
- Available for most cylinder arm cover stitch machines.

DESCRIPTION

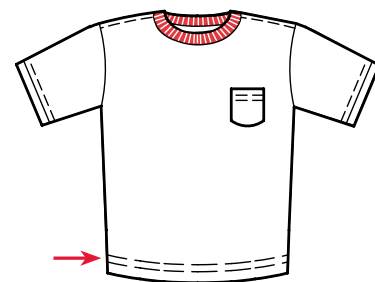
It is the smallest way to hem bottoms or closed sleeves with or without seams. The remote mounting of the control makes this possible. It is setup with automatic sensing of starting stitches with photoelectric



Plain Hem
w/Bottom Cover



Plain Hem
w/Top &
Bottom Cover



Adult sizes

SPECIFICATIONS

Voltage (v/ph/hz)	220v 1ph
Current (amps)	5
Air pressure (psi)	90
Air consumption (cfm)	5

PRODUCTION

Pieces per hour	200-250
-----------------	---------

Depending on material and size of parts

www.atlatt.com • sales@atlatt.com

PATENTS: Our equipment may be covered by one or more patents.
Please go to the following web page for an up-to-date patent list: www.atlatt.com/patents.php
© 2018 Atlanta Attachment Co. 17168042718

362 Industrial Park Drive
Lawrenceville, GA 30046 USA
+1 (770) 963-7369 • FAX +1 (770) 963-7641



Atlanta Attachment Company

The Company that
Sudden Service
built