



PRICELESS
AVIATION PRODUCTS™



SINCE 1998
REV. JAN 19, 2015

Facility and Production



Index

Priceless Tugs

2

701E - Electric - 4,500 lbs MGTOW	Axle Attachments	4
701HB - Electric - 4,500 lbs MGTOW	Robinson Ball Hitch	5
702LS - Electric - 10,000 lbs MGTOW	LazySusan®	6
702 - Electric - 10,000 lbs MGTOW.....	Strut Clamp	6
707 - Gas - 9,500 lbs MGTOW	LazySusan®	7
709 - Gas - 12,500 lbs MGTOW.....	LazySusan®	8
709H - Gas - 12,500 lbs MGTOW	LazySusan®	9
717 - Gas - 15,500 lbs MGTOW.....	Clamp & Lift™	10
727 - Gas - 15,500 lbs MGTOW.....	Pan Style Lift	11
737C - Gas - 15,500 lbs MGTOW	Clamp & Lift	12
737P - Gas - 15,500 lbs MGTOW	Pan Style Lift	12
747B - Gas -25,500 lbs MGTOW	Pan Style Lift	13
757 - Gas - 35,000 lbs MGTOW.....	Pan Style Lift	14
757BFBO-NJ - Gas - 35,000 lbs MGTOW	Pan Style Lift	15
757BFBO - Gas - 35,000 lbs MGTOW	Pan Style Lift	16

Ground Power

18

Start Power - RB 24V Series	20
Start Power - RB & RBL 28V Series	23
Start Power - RB & RBL Switchable and TC400 12/24V Series.....	25
Continuous Power - RBPS & RBSC Series	26
Combination - Start & Continuous Power - TC400 and HybRED Series	28
Combination - Start & Continuous Power - TC3000 Series	30

Maintenance

32

Camera & Inspection Equipment	32
Tools and Tool Control	33

Change Notice:

All content contained herein is subject to change without notice. Priceless Aviation Products reserves the right to make changes, modifications, additions, corrections or deletions. Priceless Aviation may terminate, change, suspend or discontinue any product in this catalog, including the availability of any products, at any time. Every effort is made to keep products up-to-date but due to the nature of printed media, changes may only be available online or by contacting your sales representative.

All materials contained herein are additionally protected by United States copyright law and may not be used, disclosed, reproduced, distributed, published or sold without the express written consent of Priceless Aviation Products, which consent may be withheld in Priceless Aviation's sole discretion. You may not alter or remove any copyright, trademark or other notice from copies of these materials.

Priceless Aviation Products is a Subsidiary of Atlanta Attachment Company.

© 2014 Priceless Aviation Products

PRICELESS
AVIATION PRODUCTS®

362 Industrial Park Drive • Lawrenceville, GA 30046 USA
770 962-6188 • Toll Free: 877 206-5116 • FAX: 770 277-4199
sales@pricelessaviation.com • www.pricelessaviation.com

© 2014 Priceless Aviation Products 14075031114

Tug	Size	Engine	Fuel	LP Gas	MG-TOW*	Electric Start	Wheel Chassis	Cirrus Attachment	Jump-Start	Aircraft	Towing Mechanism	Drive
701E	400 w	Electric	Elec	-	4,500	Key	-	Alternate	-	Airplane	Axle Attachment	Variable Speed
701EL	400 w	Electric	Elec	-	4,500	Key	-	Alternate	-	Airplane	Axle Attachment	Variable Speed
701HB	400 w	Electric	Elec	-	4,500	Key	-	-	-	Helicopter	Robinson Ball Hitch	Variable Speed
701HBL	400 w	Electric	Elec	-	4,500	Key	-	-	-	Helicopter	Robinson Ball Hitch	Variable Speed
702LS	400 w	Electric	Elec	-	10,000	Key	-	-	-	Airplane	Lazy Susan	Variable Speed
702	400 w	Electric	Elec	-	10,000	Key	-	-	-	Airplane	Strut Clamp	Variable Speed
707	340 cc	Honda	Gas	Optional	9,500	Button	Yes	-	-	Airplane	Lazy Susan	5 Speed Transmission
709	340 cc	Honda	Gas	Optional	12,500	Button	Yes	-	-	Airplane	Lazy Susan	4 Speed Transmission
709H	340 cc	Honda	Gas	Optional	12,500	Button	Yes	-	-	Helicopter	Lazy Susan	4 Speed Transmission
717	340 cc	Honda	Gas	Optional	15,500	Key	Option	Option	-	Airplane	Clamp & Lift	Hydrostatic Transmission
727	340 cc	Honda	Gas	Optional	15,500	Key	Yes	Option	-	Airplane	Pan	Hydrostatic Transmission
737C	340 cc	Honda	Gas	Optional	15,500	Key	Option	Option	-	Airplane	Clamp & Lift	Hydrostatic Transmission
737P	340 cc	Honda	Gas	Optional	15,500	Key	Option	Option	-	Airplane	Pan	Hydrostatic Transmission
747B	23 hp	Vanguard	Gas	Optional	25,500	Key	Yes	Option	-	Airplane	Pan	Hydraulic Wheel Motor
757	725 cc	Honda	Gas	-	35,000	Key	Yes	Option	-	Airplane	Pan	Hydrostatic Transmission
757BFBO-NJ	35 hp	Vanguard	Gas	-	35,000	Key	Yes	Option	-	Airplane	Pan	Hydraulic Wheel Motor
757BFBO	35 hp	Vanguard	Gas	-	35,000	Key	Yes	Option	Yes	Airplane	Pan	Hydraulic Wheel Motor

PRICELESS AIRCRAFT TUGS...

For Private Aircraft, Corporate Aircraft,
Maintenance Shops & FBO facilities

The latest technology for the movement of aircraft. Priceless Aviation Products make it easy for one person to maneuver aircraft quickly and safely in tightly stacked hangars or staging on the ramp. Our tugs range from a small electric unit to 35HP Vanguard engine and tow a range from 4,500 lbs to 35,000 lbs. MGTO. The list above is a quick reference to the models and their basic specifications. All units have mechanical and electrical tug component warranties. The new Battery Bank system on the 757BFBO can be used for jump starting an airplane or helicopter.

* Tug performance data based on level, smooth, paved surfaces.

LazySusan... for Maneuverability and Ease of Handling



LazySusan® is our original towing mechanism and is the perfect way to move aircraft without damage to nose gear. The LazySusan® turntable gives our tug maneuverability and ease of handling. Reverse an aircraft in its own wingspan or maneuver an aircraft in a tightly packed hangar or ramp area with ease and without over extending the nose gear. LazySusan® is available on models 702LS, 707, 709, and as an option on models 727, 737P, 747B, 757, 757BFBO-NJ, 757BFBO.

These versatile tugs eliminate the need for a specialized tow bar.



Ground Power Units
Red Box jump start and continuous
power systems starting on page 18.



Warranty Mechanical: 12 months or 500 hours of use
Warranty Electrical: 6 months or 250 hours of use

Types of Tug Lifts



Robinson Lift

Designed specifically for transporting Robinson helicopters. Available only on the model 701H and 701HL tugs.



Strut Clamp

Will move most single nosewheel aircraft, including those with wheel pants. The Strut Clamp comes standard on the model 702 tug.



Axle Attachment For aircraft with or without wheel pants

The Axle Attachment is used on the the model 701 tug. It's use is for lightweight aircraft and is steered moving handles left to right and pivoting on the drive wheel while connected to the aircraft and shifting positions. Optional adapters available for many aircraft.



LazySusan®

LazySusan® is our original towing mechanism and is the perfect way to move aircraft without damage to nose gear. The LazySusan® turntable gives our tug maneuverability and ease of handling. Reverse an aircraft in its own wingspan or maneuver an aircraft in a tightly packed hangar or ramp area with ease and without over extending the nose gear. LazySusan® is available on models 702LS, 707, 709, 709H and as an option on models 717P, 737P, 747B, 757, 757BFBO, 757BFBO-NJ.



Pan Style Lift

The Pan Style Lift is used for aircraft with wheel chins, wheel pants or dual nose wheels and is available on models: 727, 737P, 747B, 757, 757BFBO-NJ, 757BFBO. The LazySusan can be added as an option to the Pan Style Lift.



Clamp & Lift™

The Clamp & Lift is used for single wheel aircraft with no wheel chins. It can be used with wheel pants and is available on models: 717 and 737C.



Cirrus Attachment

The optional Cirrus Attachment is designed specifically for moving the Cirrus aircraft and can be attached to models: 717, 737P, 747B, 757, 757BFBO-NJ, 757BFBO

701E & 701EL

Lightweight Aircraft



Swivel Attachment

Turn without
lifting tug!



Controls



Optional Snow Chains

Adapters:

Choose from:
19", 25" or 31"
clamps for your
particular aircraft



* Tug performance data based on level, smooth, paved surfaces.

Electric Power

Move aircraft up to 4,500 lbs.* MGTOW

Easily move small aircraft quickly and safely in tight areas. The model **701E** is collapsible for compact stowing. Optional ball hitch attachment for movement of small trailers & campers. The model **701EL** is equipped with an extra-heavy-duty battery for longer life.

Standard Features:

- 400W effective power
- 24V DC Electric motor
- **701E** battery life approx. 1 hr (fully charged)
2 - 12V lead-gel batteries
- **701EL** battery life approx. 1 1/2 hour (fully charged)
2 - 12V sealed dry-cell batteries
- Operator can easily control steering
- Rocker switch for forward/reverse
- Adjustable speed
- Virtually silent when moving
- Environmentally friendly - no exhaust
- Easily replace batteries
- Collapsible design
- Easy adjust handle for user comfort
- Universal adaptor for quick tool-free attachment to a wide range of aircraft
- Swivel attachment

Options:

- Ball hitch attachment for easy movement of campers, boats & trailers.
- Headlight
- Snow chains

A few of the many adapters available:



Cessna #1000574
without wheel pants



Cessna #1000871
with wheel pants



Cirrus #1000575



Beech #1000591



Small Single Engine
(Specify)



Tail Wheel A/C (specify)

These versatile tugs eliminate the need for a specialized tow bar.



Ground Power Units

Red Box jump start and continuous power systems starting on page 18.



Warranty Mechanical: 12 months or 500 hours of use
Warranty Electrical: 6 months or 250 hours of use



Electric Power

Standard Features:

- 400W effective power
- 24V DC Electric motor
- **701HB** battery life approx. 1 hr (*fully charged*)
2 - 12V lead-gel batteries
- **701HBL** battery life approx. 1 1/2 hour (*fully charged*)
2 - 12V sealed dry-cell batteries
- Operator can easily control steering
- Rocker switch for forward/reverse
- Adjustable speed
- Virtually silent when moving
- Environmentally friendly - no exhaust
- Easily replace batteries
- Easy adjust handle for user comfort
- Universal adaptor for quick tool-free attachment to Robinson R22 & R44 helicopters
- Quick release hitch stays attached until released by user for added safety
- Adjustable mirror
- Tow capacity up to 4,500 lbs* MGTOW



Robinson Ball Hitch shown in mirror from perspective of user



The model **701HB** tug, developed with the same technology used for the fixed wing market, is for easier transportation of a Robinson helicopter in hangars and air fields. As the industry has come to expect, the engineers have added many user-friendly features not found on today's market. The model **701HBL** is equipped with an extra-heavy-duty battery for longer life.



Optional snow chains

* Tug performance data based on level, smooth, paved surfaces.

These versatile tugs eliminate the need for a specialized tow bar.



Electric Power

**Move aircraft up to
10,000 lbs.* MGTOW.**
Including aircraft with wheel pants

Easily move aircraft quickly and safely in tight areas. The **702** comes in two models. The LazySusan version can move single nosewheel aircraft including those with chines. The Strut Clamp version will also move aircraft with wheel pants.

Standard Features:

- 400W effective power
- 24V DC Electric motor
- 702 battery life approximately 1 hr (fully charged)
- Operator can easily control steering
- Rocker switch for forward/reverse
- Adjustable speed
- Virtually silent when moving
- Environmentally friendly - no exhaust
- Easily replace batteries
- Easy adjust handle for user comfort
- Headlight

Options:

- Snow chains



Controls and
kill switch

702LS - LazySusan



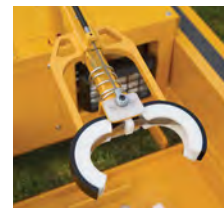
Move most single nosewheel aircraft,
including those
with chines



702 - Strut Clamp



Will move most single nosewheel
aircraft, including those
with wheel pants



Strut Clamp

* Tug performance data based on level, smooth, paved surfaces.

These versatile tugs eliminate the need for a specialized tow bar.





Move aircraft up to 9,500 lbs.* MGTOW, including single nose wheel aircraft with chines.

For aircraft without wheel pants.

Designed and built to save time and money for FBOs, Maintenance Shops, Corporate aviation or anyone needing to move aircraft. The 707 Tug makes it easy for one person to maneuver aircraft quickly and safely in tightly stacked hangars or staging on the ramp.



Standard Features:

- 340cc Honda OHV Engine - EPA approved
- Gasoline (87-100LL)
- Electric start
- Electric winch
- Heavy-Duty transmission
- Disc brake
- High-flotation pneumatic drive tires
- Lazy Susan
- Quick-Lock strap to secure nosewheel
- Headlight

Options:

- Snow chains
- Battery tender
- Fire extinguisher
- Red Box
- Jump-Start

340cc Honda Engine



* Tug performance data based on level, smooth, paved surfaces.

These versatile tugs eliminate the need for a specialized tow bar.





Move aircraft up to 12,500 lbs. *MGTOV, including single & dual wheel aircraft with chines. For aircraft without wheel pants.

Designed and built to save time and money for FBOs, Maintenance Shops, Corporate aviation or anyone needing to move aircraft. The 709 LazySusan Tug makes it easy for one person to maneuver aircraft quickly and safely in tightly stacked hangars or staging on the ramp.

Standard Features:

- 340cc Honda OHV Engine - EPA approved
- Gasoline (87-100LL)
- Electric start
- Electric winch
- Heavy-duty transmission
- Disc brake
- Heavy-duty frame
- LazySusan turntable
- Quick-Lock strap to secure nose wheel
- High-flotation pneumatic drive tires
- Headlight

Options:

- Forward/reverse alarm
- Amber strobe light
- Fire extinguisher
- Snow chains
- Battery tender
- Red Box Jump-Start



Single or dual nose wheel



340cc Honda Engine

* Tug performance data based on level, smooth, paved surfaces.

These versatile tugs eliminate the need for a specialized tow bar.



Low Profile Helicopters



**Move helicopters up to 12,500 lbs.
*MGTO, including single & dual wheel
aircraft with chines. For aircraft without
wheel pants.**

Designed and built to save time and money for FBOs, Maintenance Shops, Corporate aviation or anyone needing to move aircraft. The 709H LazySusan Tug was designed specifically for low profile helicopters and other aircraft to make it easy for one person to maneuver aircraft quickly and safely in tightly stacked hangars or staging on the ramp.

Standard Features:

- 340cc Honda OHV Engine - EPA approved
- Gasoline (87-100LL)
- Electric start
- Electric winch
- Heavy-duty transmission
- Disc brake
- Heavy-duty frame
- LazySusan turntable
- Quick-Lock strap to secure nose wheel
- Low-profile pneumatic drive tires
- Headlight

Options:

- Forward/reverse alarm
- Amber strobe light
- Fire extinguisher
- Snow chains
- Battery tender
- Red Box Jump-Start



Single or dual nose wheel



340cc Honda Engine

* Tug performance data based on level, smooth, paved surfaces.

These versatile tugs eliminate the need for a specialized tow bar.





Move aircraft up to 15,500 lbs. *MGTOW

Designed and built to save time and money for FBOs, Maintenance Shops, Corporate aviation or anyone needing to move aircraft.

The 717 **Clamp & Lift™** Tug makes it easy for one person to maneuver aircraft quickly and safely in tightly stacked hangars or staging on the ramp.

Optional
Cirrus Attachment



340cc Honda Engine



Standard Features:

- 340cc Honda OHV Engine - EPA approved
- Gasoline (87-100LL)
- Electric key start
- Heavy-Duty hydrostatic transmission
- Neutral automatic braking
- Electro-Hydraulic nose wheel Clamp&Lift™ system
- Quick-Lock strap to secure nosewheel
- High-flotation pneumatic drive tires
- Heavy-duty alternator keeps battery charged
- Diamond deck riding platform

Options:

- Liquid propane fuel system (Model 717L)
- Forward/reverse alarm
- Cirrus attachment
- 2nd Headlight
- Amber strobe light
- Fire extinguisher
- Pintle hitch (helicopter dolly mover)
- Battery tender
- Red Box Jump-Start



* Tug performance data based on level, smooth, paved surfaces.

These versatile tugs eliminate the need for a specialized tow bar.





Move aircraft up to 15,500 lbs. *MGTOW, including aircraft with chines.

Designed and built to save time and money for FBOs, Maintenance Shops, Corporate aviation or anyone needing to move aircraft. The 727 Tug makes it easy for one person to maneuver aircraft quickly and safely in tightly stacked hangars or staging on the ramp.

Standard Features:

- 340cc Honda OHV Engine - EPA approved
- Gasoline (87-100LL)
- Electric key start
- Heavy-Duty hydrostatic transmission
- Neutral automatic braking
- Electro-hydraulic nose wheel pan
- Electric winch with 5,000 lb capacity & quick-lock strap to secure nosewheel
- High-flotation pneumatic drive tires
- Heavy-duty alternator keeps battery charged
- Diamond deck riding platform



Pan Style Lift



Optional

Options:

- Liquid propane fuel system (Model 727L)
- Forward/reverse alarm
- Amber strobe light
- Fire extinguisher
- Cirrus attachment
- Pintle hitch (helicopter dolly mover)
- 2nd headlight
- Battery tender
- Red Box Jump-Start
- LazySusan (single nose wheel)



340cc Honda Engine

* Tug performance data based on level, smooth, paved surfaces.

These versatile tugs eliminate the need for a specialized tow bar.





Move aircraft up to 15,500 lbs. *MGTOW

Designed and built to save time and money for FBOs, Maintenance Shops, Corporate aviation or anyone needing to move aircraft.

The 737 **Clamp & Lift™** Tug makes it easy for one person to maneuver aircraft quickly and safely in tightly stacked hangars or staging on the ramp.

Standard Features:

- Designed specifically for the Pilatus PC12 / Socata TBM
- 340cc Honda OHV Engine - EPA approved
- Gasoline (87-100LL)
- Electric key start
- Heavy-Duty hydrostatic transmission
- Neutral automatic braking
- Electro-Hydraulic nose wheel **Clamp & Lift™** system
- Quick-Lock strap to secure nosewheel
- High-flotation pneumatic drive & steer tires
- Heavy-duty alternator keeps battery charged
- Diamond deck riding platform

737P - Pan Style



737C - Clamp&Lift



Options:

- Liquid propane fuel system (Model 737L)
- Forward/reverse alarm
- Amber strobe light
- Fire extinguisher
- Pintle hitch (helicopter dolly mover)
- Cirrus attachment
- 2nd headlight
- Battery tender
- Red Box Jump-Start

340cc Honda Engine



* Tug performance data based on level, smooth, paved surfaces.

These versatile tugs eliminate the need for a specialized tow bar.





**High speed tug (8 mph)
will move any aircraft
weighing up to 25,000 lbs. MGTOW***

Pan Style Lift



Controls



23 HP Vanguard Engine

Standard Features:

- Hydraulic nose wheel pan
- Electric winch & quick-Lock strap
- High-flotation pneumatic drive tires
- Dual heavy-duty alternators keep Battery-Bank charged
- No-Skid riding platform surface
- Electric key start
- 23HP Vanguard Engine, EPA approved
- Gasoline (87-100LL)
- Parking brake: 2-wheel, disk brakes

Options:

- Forward/reverse alarm
- Amber strobe light
- Pintle hitch
- 2nd Headlight
- Dual drive wheels
- Fire extinguisher
- Cirrus attachment
- Red Box Jump Start
- LazySusan.



* Tug performance data based on level, smooth, paved surfaces.

These versatile tugs eliminate the need for a specialized tow bar.





Will move any aircraft weighing up to 35,000 lbs *MGTOW

Gas powered aircraft mover designed to move corporate jets, helicopters and transports for thousands of dollars less than the nearest competitor! The 757 Tug makes it easy for one person to maneuver aircraft quickly and safely in tightly stacked hangars or staging on the ramp.

Standard Features:

- 725cc Honda Engine - EPA approved
- Gasoline (87-100LL)
- Electric key start
- Heavy-Duty hydrostatic transmission
- Neutral automatic braking
- Electro-Hydraulic nose wheel pan
- Electric winch & quick-lock strap to secure nose wheel
- Heavy-duty alternator keeps battery charged for continuous duty
- Super-duty solid traction-type tires
- Diamond deck riding platform

Pan Style Lift



Options:

- 2nd Headlight
- Amber strobe light
- Fire extinguisher
- Cirrus attachment
- Dual drive wheels
- Forward/reverse alarm
- Red Box Jump-Start
- Pintle hitch
- LazySusan (helicopter dolly mover)
- LazySusan (single or dual nose wheel)



* Tug performance data based on level, smooth, paved surfaces.

These versatile tugs eliminate the need for a specialized tow bar.



Ground Power Units

Red Box jump start and continuous power systems starting on page 18.



Warranty Mechanical: 12 months or 500 hours of use
Warranty Electrical: 6 months or 250 hours of use



Will move any aircraft weighing up to 35,000 lbs *MGTOW

Standard Features:

- Hydraulic nose wheel pan
- Electric winch & quick-Lock strap
- Super-duty solid traction-type tire
- Dual heavy-duty alternators keep Battery-Bank charged
- No-Skid riding platform surface
- Electric key start
- 35HP Vanguard Engine, EPA approved
- Gasoline (87-100LL)
- Parking brake: 2-wheel, disk brakes



35 HP Vanguard Engine

Options:

- Forward/reverse alarm
- Amber strobe light
- Pintle hitch
- 2nd Headlight
- Dual drive wheels
- Fire extinguisher
- Cirrus attachment
- Red Box Jump Start
- LazySusan (single or dual nose wheel)

Hydraulic Wheel Motor Drive High speed (8 mph)



Pan Style Lift



* Tug performance data based on level, smooth, paved surfaces.

These versatile tugs eliminate the need for a specialized tow bar.





Pintle hitch
optional



Jump Start Battery Bank



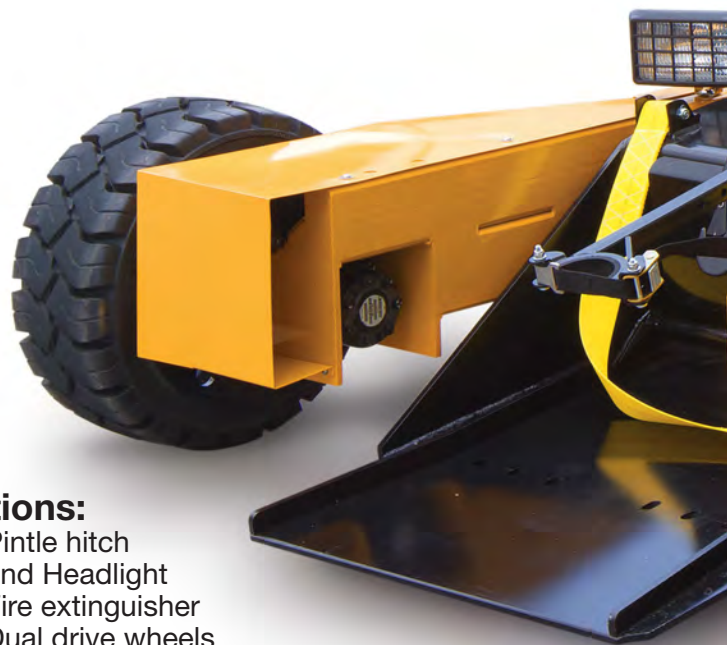
Electric Winch



Dual Drive Wheels optional



35 HP Vanguard Engine



Pan Style Lift

Options:

- Pintle hitch
- 2nd Headlight
- Fire extinguisher
- Dual drive wheels
- Cirrus attachment
- Amber strobe light
- Limit switch for winch
- Forward/reverse alarm
- LazySusan (single or dual nose wheel)

* Tug performance data based on level, smooth, paved surfaces.

These versatile tugs eliminate the need for a specialized tow bar.



Hydraulic Wheel Motor Drive High speed (8 mph)

Will move any aircraft weighing
up to 35,000 lbs*

Jump Start System

Will start any piston or electrically
started turbine engine.



NOTE: Jump Start System
is not designed to be
operated as a GPU.



Standard Features:

- Jump-Start
- Hydraulic nose wheel pan
- Electric winch & quick-Lock strap
- Super-duty solid traction-type tire
- Dual heavy-duty alternators keep Battery-Bank charged
- Parking brake: 2-wheel, disk brakes
- No-Skid riding platform surface
- 35HP Vanguard Engine, EPA approved
- Gasoline (87-100LL)
- Electric key start



* Tug performance data based on level, smooth, paved surfaces.

These versatile tugs eliminate the need for a specialized tow bar.



Ground Power

Start
Switchable
Lithium
Combination
Continuous
HybRED

POWER

Model	Start Power	Continuous Power	Voltage DC	Normal Amps Peak Amps	Continuous Amps	Battery Type	Weight lbs	PAGE NO.
START								
RB25A	YES	-	12	1600 / 2600	-	LEAD ACID	36	20
RB25A	YES	-	24	800 / 1300	-	LEAD ACID	36	20
RB50A	YES	-	24	1500 / 2300	-	LEAD ACID	51	21
RB75A	YES	-	24	1700 / 2600	-	LEAD ACID	64	21
RB50A TWIN	YES	-	24	3000 / 4600	-	LEAD ACID	102	21
RB75A TWIN	YES	-	24	3500 / 5200	-	LEAD ACID	128	21
RB60A	YES	-	28	1500/2300	-	LEAD ACID	60	23
RB85A	YES	-	28	1700/2600	-	LEAD ACID	73	23
RB60A Twin	YES	-	28	3000/4600	-	LEAD ACID	120	23
RB85A Twin	YES	-	28	3500/5200	-	LEAD ACID	165	23
RBL2500	YES	-	28	800/2500	-	LITHIUM	15	23
RBL4000	YES	-	28	1500/4000	-	LITHIUM	26	23
RBL4000 TWIN	YES	-	28	3000	-	LITHIUM	52	23
RB25A 12/24	YES	-	12	1600 / 3200	-	LEAD ACID	51	25
			24	800 / 1000				
RB50A 12/24	YES	-	12	3000 / 4600	-	LEAD ACID	71	25
			24	1500 / 2300				
RBL2500 14/28	YES	-	14	2600 / 5000	-	LITHIUM	26	25
			28	1300 / 2500				
RBL4000 14/28	YES	-	14	4000 / 8000	-	LITHIUM	40	25
			28	2000 / 4000				
TC400A/4	YES	-	24	3500 / 5200	-	LEAD ACID	232	25
TC400A/6	YES	-	24	5000/7800	-	LEAD ACID	298	25
TC400A/8	YES	-	24	7000/10400	-	LEAD ACID	364	25
CONTINUOUS								
RBPS25	-	YES	14.4 / 28.5	-	25	-	16	26
RBPS50	-	YES	14.4 / 28.5	-	50	-	25	26
RBPS75	-	YES	14.4 / 28.5	-	75	-	36	26
RBPS100	-	YES	14.4 / 28.5	-	100	-	40	26
RBSC50	-	YES	14.4 / 28.5	-	50	-	36	27
RBSC100	-	YES	14.4 / 28.5	-	100	-	38	27
RBSC150	-	YES	14.4 / 28.5	-	150	-	102	27
RBSC225	-	YES	14.4 / 28.5	-	225	-	124	27
RBSC300	-	YES	14.4 / 28.5	-	300	-	143	27
RBSC450	-	YES	14.4 / 28.5	-	450	-	163	27
RBSC600	-	YES	14.4 / 28.5	-	600	-	187	27





Priceless Aviation Products make a wide range of Red Box Jump-Start units. Please specify the make and model of your aircraft when purchasing.

The Red Box hand portable packs are the most powerful Hand Portable Packs available worldwide. Red Box uses the latest in military aerospace technology to achieve a very high power to weight ratio. These power packs are designed for starting of piston, turboprop or turbine aircraft and helicopters in the field or in remote locations. The power packs are "all weather" units and being modular, can be used in single or dual format. They can be used or stored in any orientation, even inverted. Cells used are cleared as non-hazardous cargo for carriage in the aircraft. They are able to operate in extremes of temperature and have excellent standby characteristics. They are maintenance free and do not require cycling.

They can be re-celled "on condition" at any Red Box service center in the world and are designed to give years of repeated service. In addition to aviation, these highly portable units can be used with Armored Fighting vehicles and Military equipment. They can be recharged from the automatic charging system, which is supplied in the package, or from any vehicle using a suitable interface.

The standard power pack system includes a portable power unit, a rugged multistage electronic charger with extreme weather capabilities and heavy duty cables with aviation or vehicle connectors.

Model	Start Power	Continuous Power	Voltage DC	Normal Amps Peak Amps	Continuous Amps	Battery Type	Weight lbs	
COMBO - START & CONTINUOUS								PAGE NO.
TC400A/28C	YES	YES	28	3500/5200	95A @1 HR	LEAD ACID	286	28
TC400A/28T	YES	YES	28	7000/10400	190A @1 HR	LEAD ACID	364	28
TC400A/28TR	YES	YES	28	10500/15600	285A @1 HR	LEAD ACID	881	28
TC400A/28QU	YES	YES	28	14000/20800	380A @1 HR	LEAD ACID	1333	28
HybRED 170/4	YES	YES	28	3500/5200	170	LEAD ACID	286	29
HybRED 170/6	YES	YES	28	5000/7800	170	LEAD ACID	341	29
TC3000/50-2	YES	YES	28.5	1700/2600	50	LEAD ACID	188	30
TC3000/50-4	YES	YES	28.5	3500/5200	50	LEAD ACID	243	30
TC3000/50-6	YES	YES	28.5	5000/7800	50	LEAD ACID	298	30
TC3000/100-4	YES	YES	28.5	3500/5200	100	LEAD ACID	254	30
TC3000/100-6	YES	YES	28.5	5000/7800	100	LEAD ACID	309	30
TC3000/150-4	YES	YES	28.5	3500/5200	150	LEAD ACID	265	30
TC3000/150-6	YES	YES	28.5	5000/7800	150	LEAD ACID	329	30
TC3000/225-4	YES	YES	28.5	3500/5200	225	LEAD ACID	276	30
TC3000/225-6	YES	YES	28.5	5000/7800	225	LEAD ACID	341	31
TC3000/300-4	YES	YES	28.5	3500/5200	300	LEAD ACID	286	31
TC3000/300-6	YES	YES	28.5	5000/7800	300	LEAD ACID	341	31
TC3000/300-8	YES	YES	28.5	7000/10400	300	LEAD ACID	397	31
TC3000/450-6	YES	YES	28.5	5000/7800	450	LEAD ACID	451	31
TC3000/450-8	YES	YES	28.5	7000/10400	450	LEAD ACID	507	31
TC3000/600-6	YES	YES	28.5	5000/7800	600	LEAD ACID	451	31
TC3000/600-8	YES	YES	28.5	7000/10400	600	LEAD ACID	507	31



Ground Power



**DO NOT
Dispatch
without Red Box
reliable cool
start unit
on board.**

**Red Box units
may be carried
safely on board
all aircraft.**

Light Aircraft

Typical: Robinson R22 & R44;
Agusta Westland A109; Beechcraft
Baron & Bonanza; Bell 206 Jet
Ranger and 47; Cessna 180, 205
and 414 Cirrus SR20, Eurocopter
AS355, Piper6X, Malibu Meridian
and Malibu Mirage



RB25A 24
RB25A 12

	RB25A 24V NATO S/N 2995-99-132-3061	RB25A 12V
Maximum Amps	800 (Nom. short circuit current)	1600 (Nom. short circuit current)
Capacity	16 Amp Hrs @ 10 hr rate	32 Amp Hrs @ 10 hr rate
Max voltage	26V DC	13V DC
Size (inch)	L 13.78 x W 3.54 x H 9.05	L 13.78 x W 3.54 x H 9.05
Weight (lbs)	36	36
Operating Temp.	-40° to +140° F	-40° to +140° F
Case	Stainless steel	Stainless steel
Voltage Indication	Digital to IP65	Digital to IP65
Auxiliary Protection	Circuit breaker 40A	Circuit breaker 40A
Aircraft Cable	2 meter heavy duty, NATO connector	2 meter heavy duty, NATO connector
Charger	3 amp electronic universal AC input	6 amp universal AC input
Protection	Reverse polarity warning	Reverse polarity warning

Warranty Red Box: 1 year against manufacturers defects

**Move
Start
Power
IT!**

Aircraft Tugs

Tugs available for moving aircraft
from 3,500 - 35,000 lb MGTOW



Proudly Built in the USA

Warranty Red Box:

1 year against manufacturers defects

	RB50A 24V NATO S/N 2995-99-132-3061
Maximum Amps	1500 (Nom. short circuit current)
Capacity	27 Amp Hrs @ 10 hr rate
Max voltage	26V DC
Size (inch)	L 13.70 x W 4.13 x H 14.96
Weight (lbs)	51
Operating Temp.	-40° to +140° F
Case	Stainless steel
Voltage Indication	Digital to IP65
Auxiliary Protection	Circuit breaker 50A
Aircraft Cable	2 meter heavy duty, NATO connector
Charger	8 amp electronic universal AC input
Protection	Reverse polarity warning



RB50A 24

Light Aircraft

Continued

	RB75A 24V NATO S/N 2995-99-305-9056
Maximum Amps	1700 (Nom. short circuit current)
Capacity	38 Amp Hrs @ 10 hr rate
Max voltage	26V DC
Size (inch)	L 17.52 x W 4.13 x H 14.96
Weight (lbs)	64
Operating Temp.	-40° to +140° F
Case	Stainless steel
Voltage Indication	Digital to IP65
Auxiliary Protection	Circuit breaker 50A
Aircraft Cable	2 meter heavy duty, NATO connector
Charger	8 amp electronic universal AC input
Protection	Reverse polarity warning



RB75A 24

Medium Aircraft

Typical: Beechcraft Kingair 100A, C90B, E90, Bell 212, 407, 430, 206 Longranger, 212, 407, 430. Cessna Citation Bravo 550, Eclipse 500, Eurocopter AS 350B3 & EC130, Mil Mi-2, Pilatus PC-12, Sikorsky S76 & 262C, Socata TBM-700

	RB50A TWIN 24V	RB75A TWIN 24V
Maximum Amps	3000 (Nom. short circuit current)	3500 (Nom. short circuit current)
Capacity	54 Amp Hrs @ 10 hr rate	76 Amp Hrs @ 10 hr rate
Max voltage	26V DC	26V DC
Size (inch)	2 x L 13.70 x W 4.13 x H 14.96	L 17.52 x W 4.13 x H 14.96
Weight (lbs)	102	128
Operating Temp.	-40° to +140° F	-40° to +140° F
Case	Stainless steel	Stainless steel
Voltage Indication	Digital to IP65	Digital to IP65
Auxiliary Protection	Circuit breaker 50A	Circuit breaker 50A
Aircraft Cable	2 meter heavy duty, NATO connector	2 meter heavy duty, NATO connector
Charger	2 x 8 amp electronic universal AC input	2 x 8 amp electronic universal AC input
Protection	Reverse polarity warning	Reverse polarity warning



RB50A Twin 24
RB75A Twin 24

Warranty Red Box: 1 year against manufacturers defects



Ground Power



Typical Aircraft:

Beechcraft Kingair 100A, C90B, E90, Bell 212, 407, 430, 206 Longranger, 212, 407, 430. Cessna Citation Bravo 550, Eclipse 500, Eurocopter AS 350B3 & EC130, Mil Mi-2, Pilatus PC-12, Sikorsky S76 & 262C, Socata TBM-700



**DO NOT
Dispatch
without Red Box
reliable cool
start unit
on board.**

Warranty Red Box: 1 year against manufacturers defects

Warranty Red Box:

1 year against manufacturers defects

**Move
Start
Power
IT!**

Aircraft Tugs

Tugs available for moving aircraft
from 3,500 - 35,000 lb MGTOW





	RB60A 28V	RB85A 28V	RB60A TWIN 28V	RB85A TWIN 28V
Maximum Amps	1500 Nominal short circuit	1700 Nominal short circuit	3000 Nominal short circuit	3500 Nominal short circuit
Capacity	27 Amp Hrs	38 Amp Hrs	54 Amp Hrs	76 Amp Hrs
Max Start Voltage	30v DC	30v DC	30v DC	30v DC
Size (inch)	L 17.52 x W 4.13 x H 14.96	L 21.85 x W 4.13 x H 14.96	(2) x L 17.52 x W 4.13 x H 14.96	(2) x L 21.85 x W 4.13 x H 14.96
Weight (lbs)	60	73	120	165
Operating Temp.	-40° to +140° F	-40° to +140° F	-40° to +140° F	-40° to +140° F
Case	Stainless steel	Stainless steel	Stainless steel	Stainless steel
Voltage Indication	Digital to IP 65	Digital to IP 65	Digital to IP 65	Digital to IP 65
Auxiliary Protection	Circuit breaker 40A	Circuit breaker 40A	Circuit breaker 40A	Circuit breaker 40A
Aircraft Cable	2 meter heavy duty	2 meter heavy duty	2 meter heavy duty	2 meter heavy duty
Charger	8A Universal AC input charger	8A Universal AC input charger	(2) x 8A Universal AC input charger	(2) x 8A Universal AC input charger



Lithium

The Red Box range of Lithium start units are the lightest in the world. These GPUs' weigh as little as 16 lbs. and have maximum outputs of up to 8000 amps. As with all Red Box ground power units the lithium range can be twinned together to create larger capacity units.

Utilizing the latest in Lithium technology these start units are extremely robust and user friendly.

It is important to choose not only the right unit for your aircraft, but also the right unit for your operation. Some customers only want a unit to start in emergencies and some will be using it multiple times a day. Although Red Box units are designed to start aircraft, some customers require a small amount of continuous power as well. Please discuss your requirements with our sales team; they have the experience to recommend the correct unit for your needs.

	RBL2500	RBL4000	RBL4000 Twin
Maximum Amps	2500	4000	8000
Capacity	16 Amp Hrs	28 Amp Hrs	56 Amp Hrs
Max Voltage	28v DC	28v DC	28v DC
Size (inch)	L 14 x W 4 x H 9	L 14 x W 4 x H 15	2 x L 14 x W 4 x H 15
Weight (lbs)	15	26	52
Operating Temp.	-40° to +140° F	-40° to +140° F	-40° to +140° F
Case	Aluminum	Aluminum	Aluminum
Voltage Indication	Digital To IP 65	Digital To IP 65	Digital To IP 65
Auxiliary Protection	Circuit Breaker 40A	Circuit Breaker 40A	Circuit Breaker 40A
Aircraft Cable	2 meter heavy duty	2 meter heavy duty	2 meter heavy duty
Charger	4 Amp Universal AC	4 Amp Universal AC	2X 4 Amp Universal AC

Red Box units may be carried safely on board all aircraft.



Ground Power



Switchable

These high powered dual 12v and 24v units are designed to offer maximum power to weight ratio. With the Red Box 'switch cable system' these switchable units can outlive similar products on the market by up to 100%. Red Box dual voltage systems comprise of 2 batteries cleverly configured to ensure that an equal amount of current is drawn from both cells, regardless of whether you are using the unit in 12v or 24v mode. Many other systems on the market will use only one battery when in 12v mode. Built to Military and Aviation standards, you can be guaranteed of the quality of this product.

Units are available in both pure lead and lithium, while lead units are more cost effective, lithium units weigh substantially less.

TC400 Series

Typical Aircraft:

Agusta Westland EH101; Beechcraft 1900D & Kingair 350; Bell 214A & CH-135 Twin Huey, Cessna Citation CJ24; DeHavilland DHC-8-300B; Eurocopter EC225, Fokker F-27

Aircraft Tugs

Tugs available for moving aircraft from 3,500 - 35,000 lb MGTOW



Warranty Red Box:

1 year against manufacturers defects

RB & RBL 12/24V Series - Switchable TC400 Series

Start Power



	RB25A 12/24	RB50A 12/24	RBL2500 14/28	RBL4000 14/28
Maximum Amps 24V	1600	2300	2500	4000
Maximum Amps 12V	3200	4600	5000	8000
Capacity 24V	17 Amp Hrs	27 Amp Hrs	16 Amp Hrs	28 Amp Hrs
Capacity 12V	34 Amp Hrs	54 Amp Hrs	32 Amp Hrs	56 Amp Hrs
Max Voltage	26v DC	26v DC	28v DC	28v DC
Size (inch)	L 16 x W 13 x H 8	L 16 x W 13 x H 8	L 16 x W 9 x H 8	L 16 x W 9 x H 8
Weight (lbs)	51	71	26	40
Operating Temp.	-40°F to +140°F	-40°F to +140°F	-40°F to +140°F	-40°F to +140°F
Case	Aluminum	Aluminum	Aluminum	Aluminum
Voltage Indication	Digital To IP 65	Digital To IP 65	Digital To IP 65	Digital To IP 65
Auxiliary Protection	Circuit Breaker 20A	Circuit Breaker 40A	Circuit Breaker 20A	Circuit Breaker 40A
Aircraft Cable	2M Heavy Duty	2M Heavy Duty	2M Heavy Duty	2M Heavy Duty
Charger	4 Amp Universal AC	8 Amp Universal AC	8 Amp Universal AC	8 Amp Universal AC

All our units come with a separate charger, assuring the life of your pack. It is the pack that will get the continual use, keeping the charger separate that protects it. The built in LED display will ensure you always know the status of the pack. When the batteries within the unit finally come to the end of their life, simply contact a Red Box distributor for a replacement set, all batteries are designed to be easily replaceable.



	TC400A/4 24V	TC400A/6 24V	TC400A/8 24V	TC400A/28C
Maximum Amps	3500 Nominal short circuit	5000 Nominal short circuit	7000 Nominal short circuit	5200
Capacity	76 Amp Hrs	114 Amp Hrs	152 Amp Hrs	165 Amp Hrs
Max Start Voltage	26v DC	26v DC	26V DC	30.3v DC
Size (inch)	L 30.70 x W 13.78 x H 11.81	L 30.70 x W 13.78 x H 11.81	L 30.70 x W 13.78 x H 11.81	L 31 x W 18 x H 12
Weight (lbs)	232	298	364	365
Operating Temp.	-40° to +140° F	-40° to +140° F	-40° to +140° F	-40° to +140°
Case	Zinc coated steel	Zinc coated steel	Zinc coated steel	Zinc coated steel
Voltage Indication	Digital to IP 65	Digital to IP 65	Digital to IP 65	Digital to IP 65
Auxiliary Protection	Circuit breaker 50A	Circuit breaker 50A	Circuit breaker 50A	Circuit breaker 40A
Aircraft Cable	3 meter heavy duty, NATO connector	3 meter heavy duty, NATO connector	3 meter heavy duty, NATO connector	3 meter heavy duty, NATO connector
Charger	20A Electronic 110/230v	20A Electronic 110/230v	20A Electronic 110/230v	20A Universal AC
Tow Bar Available	50mm Pin	50mm Pin	50mm Pin	50mm Pin





RBPS and RBSC Series

The RBPS and RBSC series are compact, lightweight and highly portable power units. They are designed to give continuous high quality DC power for crew training, aircraft servicing in the workshop, on the ramp or in the field. This continuous power supply is ideal for diagnostic work, pre-flight checks or for continuous powering of equipment during operations, without draining the onboard aircraft batteries.

There is a range of built in safety features and the units are simple to use. This switchable unit will produce a steady 14.4 or 28.8 Volts up to the fully rated output current with power factor correction.

The power supplies are multi-fan cooled with built-in thermal management for operation up to 50°C ambient environments. The safety features include over current and short circuit protection. The power modules conform to EMC standards for noise emissions and immunity. Delivered as standard this unit is supplied with a 2m heavy duty lead, fitted with a 3 pin NATO connector for direct aircraft connection. Other connectors including vehicle connectors are available.

FEATURES

- Direct connection to aircraft or land vehicle
- Rugged steel case
- Fan cooled
- User switchable between 14V and 28V

PROTECTION

- Overload
- Over Voltage
- Over Current
- Short Circuit

SAFETY & EMC (Power Modules)

- EN60950-1: 2006
- Emission - EN55022-B



SPECIFICATION	RBPS25	RBPS50	RBPS75	RBPS100
Output Current	25 amps	50 amps	75 amps	100 amps
Output Voltage	14.4 or 28.8v DC	14.4 or 28.8v DC	14.4 or 28.8v DC	14.4 or 28.8v DC
Output Ripple	< 250 mV	< 250 mV	< 250 mV	< 250 mV
Input Frequency	45-65 Hz	45-65 Hz	45-65 Hz	45-65 Hz
AC Input Supply	95 V-270 V	95 V-270 V	95 V-270 V	95 V-270 V
Phase	1 Ø	1 Ø	1 Ø	1 Ø
Power Factor Correction	Included	Included	Included	Included
Input Rating	880 VA	1760 VA	2640 VA	3500 VA
Operating Temp.	-40° to +140° F	-40° to +140° F	-40° to +140° F	-40° to +140° F
Dims Body (inch)	L 11.02 x W 9.84 x H 3.94	L 20.87 x W 13.78 x H 3.94	L 20.87 x W 13.78 x H 7.87	L 20.87 x W 13.78 x H 7.87
Weight (lbs)	16	25	36	40





SPECIFICATION	RBSC50	RBSC100	RBSC150	RBSC225
Output Current	50 amps	100 amps	150 amps	225 amps
Output Voltage	14.4 or 28.8v DC	14.4 or 28.8v DC	14.4 or 28.8v DC	14.4 or 28.8v DC
Output Ripple	< 250 mV	< 250 mV	< 250 mV	< 250 mV
Input Frequency	45-65 Hz	45-65 Hz	45-65 Hz	45-65 Hz
AC Input Supply	95 V-270 V	95 V-270 V	208 V-270 V	208 V-270 V
Phase	1 Ø (available in 3 Ø)	1 Ø (available in 3 Ø)	1 Ø (available in 3 Ø)	3 Ø
Power Factor Correction	Included	Included	Included	Included
Input Rating	1760 VA	3500 VA	5280 VA	7920 VA
Operating Temp.	-40° to +140° F	-40° to +140° F	-40° to +140° F	-40° to +140° F
Dimensions Body Cart (inch)	L 30.71 x W 20.67 x H 11.81	L 30.71 x W 20.67 x H 11.81	L 30.71 x W 20.67 x H 11.81	L 30.71 x W 20.67 x H 11.81
Dimensions Body Case (inch)	L 22.84 x W 20.87 x H 13.00	L 22.84 x W 20.87 x H 13.00	L 22.84 x W 20.87 x H 13.00	L 22.84 x W 20.87 x H 13.00
Weight (lbs)	35	37	79	101



SPECIFICATION	RBSC300	RBSC450	RBSC600
Output Current	300 amps	450 amps	600 amps
Output Voltage	14.4 or 28.8v DC	14.4 or 28.8v DC	14.4 or 28.8v DC
Output Ripple	< 250 mV	< 250 mV	< 250 mV
Input Frequency	45-65 Hz	45-65 Hz	45-65 Hz
AC Input Supply	95 V-270 V	95 V-270 V	208 V-270 V
Phase	1 Ø (available in 3 Ø)	1 Ø (available in 3 Ø)	1 Ø (available in 3 Ø)
Power Factor Correction	Included	Included	Included
Input Rating	1760 VA	3500 VA	5280 VA
Operating Temp.	-40° to +140° F	-40° to +140° F	-40° to +140° F
Dimensions Body Cart (inch)	L 30.71 x W 20.67 x H 11.81	L 30.71 x W 20.67 x H 11.81	L 30.71 x W 20.67 x H 11.81
Dimensions Body Case (inch)	L 22.84 x W 20.87 x H 13.00	L 22.84 x W 20.87 x H 13.00	L 22.84 x W 20.87 x H 13.00
Weight (lbs)	35	37	79



Ground Power



28v Battery Power

The TC400/28 range is designed to give silent, clean power. These 28V DC power supplies can offer both continuous power for a set time, and start power. With a built in 'flashing' light, the units will tell you when it is time to charge them. They also come with a built in voltmeter and an external charger that allows you to leave them on charge when not in use, ensuring they are always ready for operation. The TC400/28 range is designed specifically for when mains power is not readily available. They are maintenance free, with no moving parts, which make these units an extremely cost effective, environmentally friendly option.



TC400A/28C



TC400A/28T
TC400A/28TR
TC400A/28QU

	TC400A/28C	TC400A/28T	TC400A/28TR	TC400A/28QU
Maximum Nominal (Amps)	3500	7000	10500	14000
Max Current (Amps)	5200	10400	15600	20800
Capacity	165 Amp Hrs	272 Amp Hrs	408 Amp Hrs	544 Amp Hrs
Run Time (Continuous with batteries only)	95A for 1 hr 55A for 2 hr 39A for 3 hr	190A for 1 hr 110A for 2 hr 78A for 3 hr	285A for 1 hr 165A for 2 hr 117A for 3 hr	380A for 1 hr 220A for 2 hr 156A for 3 hr
Maximum Voltage	30.3v DC	30.3v DC	30.3v DC	30.3v DC
Size (inch)	L 31 x W 18 x H 12	L 79 x W 43 x H 59	L 79 x W 43 x H 59	L 79 x W 43 x H 59
Weight (lbs)	365	882	1103	1323
Operating Temp.	-40° to +140° F	-40° to +140° F	-40° to +140° F	-40° to +140° F
Case	Zinc coated steel	Zinc coated steel	Zinc coated steel	Zinc coated steel
Voltage indication	Digital to IP 65	Digital to IP 65	Digital to IP 65	Digital to IP 65
Auxiliary Protection	Circuit breaker 40A	Circuit breaker 40A	Circuit breaker 40A	Circuit breaker 40A
Aircraft Cable	3m heavy duty	3m heavy duty	3m heavy duty	3m heavy duty
Charger	20A Universal AC	20A Universal AC	20A Universal AC	20A Universal AC

Warranty Red Box: 1 year against manufacturers defects



Aircraft Tugs

Tugs available for moving aircraft from 3,500 - 35,000 lb MGTOW



Warranty Red Box:

1 year against manufacturers defects

28v HybRED Power

This Red Box unit combines a gasoline engine with a bank of batteries to offer a versatile and powerful ground power unit. The weight and size of this unit is unrivalled, making it the obvious choice of Business Jet owners and operators.



FEATURES

- High capacity heavy-duty engine starting
- Lightweight portable start and continuous power at remote locations
- Starts combat and military vehicles
- Lightweight continuous DC power for maintenance training and weapons testing
- Tough and compact
- Maintenance free cells
- No memory effect
- High charge retention cells
- Long shelf life
- Fast recharge
- No cycling
- Leak proof cells
- Cells replaceable on condition

HybRED 170/4
HybRED 170/6

	HybRED 170/4	HybRED 170/6
Continuous Power from Engine	170 Amps	170 Amps
Max Start Voltage	28.5v DC	28.5v DC
Voltage indication	Digital to IP 65	Digital to IP 65
Max Nominal Amps	3500	5000
Max Current (Amps)	5200	7800
Capacity (Ah)	76	114
Engine Size/Fuel	392cc Unleaded	392cc Unleaded
Engine Starting	Electric, Hand Pull, Back-up	Electric, Hand Pull, Back-up
Engine Fuel Tank (gal)	2	2
Engine Exhaust	Super Lo Tone Spark Arrestor	Super Lo Tone Spark Arrestor
Engine Battery	Separate 12V	Separate 12V
Engine Protection	Low Oil Shutoff	Low Oil Shutoff
Engine Cooling	Fan-cooled	Fan-cooled
Operating Temp.	-40° to +140° F	-40° to +140° F
Size - Main Body	L 37 x W 22 x H 25	L 37 x W 22 x H 25
Weight (lbs)	330	385

Warranty Red Box: 1 year against manufacturers defects



Ground Power



Optional:

- Detachable Tow Bar
- Handle and Castors



	TC3000/50-2	TC3000/50-4	TC3000/50-6	TC3000/100-4
Maximum Amps	1700 nominal short circuit	3500 nominal short circuit	5000 nominal short circuit	3500 nominal short circuit
Capacity	38 Amp Hrs	76 Amp Hrs	114 Amp Hrs	76 Amp Hrs
Max start voltage	26v DC	26v DC	26v DC	26v DC
Continuous voltage	28.5v DC	28.5v DC	28.5v DC	28.5v DC
Continuous power	50 amps	50 amps	50 amps	100 amps
AC input	95v - 270v (3 Ø Available)	95v - 270v (3 Ø Available)	95v - 270v (3 Ø Available)	95v - 270v (3 Ø Available)
Size (inch)	L 37 x W 30 x H 17	L 37 x W 30 x H 17	L 37 x W 30 x H 17	L 37 x W 30 x H 17
Weight (lbs)	188	243	298	254
Operating Temp.	-40° to +140° F	-40° to +140° F	-40° to +140° F	-40° to +140° F
Case	Zinc coated steel	Zinc coated steel	Zinc coated steel	Zinc coated steel
Voltage indication	LED display	LED display	LED display	LED display
Performance monitoring	LED display	LED display	LED display	LED display
Aircraft cable	3 meter heavy duty, NATO	3 meter heavy duty, NATO	3 meter heavy duty, NATO	3 meter heavy duty, NATO
Charger	50A Electronic inbuilt	50A Electronic inbuilt	50A Electronic inbuilt	100A Electronic inbuilt



	TC3000/100-6	TC3000/150-4	TC3000/150-6	TC3000/225-4
Maximum Amps	5000 nominal short circuit	3500 nominal short circuit	5000 nominal short circuit	3500 nominal short circuit
Capacity	114 Amp Hrs	76 Amp Hrs	114 Amp Hrs	76 Amp Hrs
Max start voltage	26v DC	26v DC	26v DC	26v DC
Continuous voltage	28.5v DC	28.5v DC	28.5v DC	28.5v DC
Continuous power	100 amps	150 amps	150 amps	225 amps
AC input	95v - 270v (3 Ø Available)	208v - 270v (3 Ø Available)	208v - 270v (3 Ø Available)	208v - 270v (3 Ø Available)
Size (inch)	L 37 x W 30 x H 17	L 37 x W 30 x H 17	L 37 x W 30 x H 17	L 37 x W 30 x H 17
Weight (lbs)	309	265	329	276
Operating Temp.	-40° to +140° F	-40° to +140° F	-40° to +140° F	-40° to +140° F
Case	Zinc coated steel	Zinc coated steel	Zinc coated steel	Zinc coated steel
Voltage indication	LED display	LED display	LED display	LED display
Performance monitoring	LED display	LED display	LED display	LED display
Aircraft cable	3 meter heavy duty, NATO	3 meter heavy duty, NATO	3 meter heavy duty, NATO	3 meter heavy duty, NATO
Charger	100A Electronic inbuilt	150A Electronic inbuilt	150A Electronic inbuilt	225A Electronic inbuilt



Warranty Red Box:

1 year against manufacturers defects

Aircraft Tugs

Tugs available for moving aircraft
from 3,500 - 35,000 lb MGTOW

TC3000 Series

Combination Start & Continuous Power

Optional:

- Detachable Tow Bar
- Handle and Castors



	TC3000/225-6	TC3000/300-4	TC3000/300-6	TC3000/300-8
Maximum Amps	5000 nominal short circuit	3500 nominal short circuit	5000 nominal short circuit	7000 nominal short circuit
Capacity	114 Amp Hrs @ 10 Hr rate	76 Amp Hrs @ 10 Hr rate	114 Amp Hrs @ 10 Hr rate	152 Amp Hrs @ 10 Hr rate
Max start voltage	26v DC	26v DC	26v DC	26v DC
Continuous voltage	28.5v DC	28.5v DC	28.5v DC	28.5v DC
Continuous power	225 amps	300 amps	300 amps	300 amps
AC input	95v - 270v (3 Ø Available)	95v - 270v (3 Ø Available)	95v - 270v (3 Ø Available)	95v - 270v (3 Ø Available)
Size (inch)	L 37 x W 30 x H 32	L 37 x W 30 x H 32	L 37 x W 30 x H 32	L 37 x W 30 x H 32
Weight (lbs)	446	410	474	525
Operating Temp.	-40° to +140° F	-40° to +140° F	-40° to +140° F	-40° to +140° F
Case	Zinc coated steel	Zinc coated steel	Zinc coated steel	Zinc coated steel
Voltage indication	LED display	LED display	LED display	LED display
Performance monitoring	LED display	LED display	LED display	LED display
Aircraft cable	3 meter heavy duty, NATO	3 meter heavy duty, NATO	3 meter heavy duty, NATO	3 meter heavy duty, NATO
Charger	225A Electronic Inbuilt	300A Electronic Inbuilt	300A Electronic Inbuilt	300A Electronic Inbuilt



	TC3000/450-6	TC3000/450-8	TC3000/600-6	TC3000/600-8
Maximum Amps	5000 nominal short circuit	7000 nominal short circuit	5000 nominal short circuit	7000 nominal short circuit
Capacity	114 Amp Hrs @ 10 Hr rate	152 Amp Hrs @ 10 Hr rate	114 Amp Hrs @ 10 Hr rate	152 Amp Hrs @ 10 Hr rate
Max start voltage	26v DC	26v DC	26v DC	26v DC
Continuous voltage	28.5v DC	28.5v DC	28.5v DC	28.5v DC
Continuous power	450 amps	450 amps	600 amps	600 amps
AC input	200v - 480v 3 Ø	200v - 480v 3 Ø	200v - 480v 3 Ø	200v - 480v 3 Ø
Size (inch)	L 37 x W 30 x H 32	L 37 x W 30 x H 32	L 37 x W 30 x H 32	L 37 x W 30 x H 32
Weight (lbs)	631	697	675	741
Operating Temp.	-40° to +140° F	-40° to +140° F	-40° to +140° F	-40° to +140° F
Case	Zinc coated steel	Zinc coated steel	Zinc coated steel	Zinc coated steel
Voltage indication	LED display	LED display	LED display	LED display
Performance monitoring	LED display	LED display	LED display	LED display
Aircraft cable	3 meter heavy duty, NATO	3 meter heavy duty, NATO	3 meter heavy duty, NATO	3 meter heavy duty, NATO
Charger	450A Electronic Inbuilt	450A Electronic Inbuilt	600A Electronic Inbuilt	600A Electronic Inbuilt



Camera & Inspection

RBF 700 Scope Inspection

- 3.5" TFT LCD
- LED brightness/contrast adjustment
- Zoom in and mirror
- Video record and snapshot
- AV out
- B/W and color modes
- Measurement mode
- 4 x AA batteries for 3 hours operation

Scope Kits

3.9mm

Front view probe
with side view mirror



4.9mm

Switchable front and
side camera probe



5.5mm

Hyperion Advanced
Scope



6.0mm

Hyperion Advanced 2
way Articulation probe



Speak to a member of the Priceless
sales team to customize a kit to your specification.



Standard Kit Includes

- Carry Case
- RBF700 Monitor
- Memory Card
- Batteries



Bench Stand



Pipe Inspection Kit



RBF700 with the 6.0 mm scope

Options

- Available Length: 1m, 2m, 3m
- Bench Stand
- Pipe Inspection Kit: 22m



Tools & Tool Control



Tool Cabinets and Individual Tools

Tool control has becoming a large part in the safety of aircraft maintenance, the need to have an organized tool kit where easily identifying 'missing' tools is important. Priceless recognized this and now offer a range of hand portable tool kits. The tool kits consist of the highest quality tools, two-tone foam and a tough, rugged, carry case. The two-tone foam layers are Skydrol resistant and laser cut for each individual tool. The top color is grey and the cut out is red making it easy to notice any missing tools.

We know you love your tools and we love them too, that is why we use the best quality BACHO tools. BACHO tools carry the ERGO trade mark, so you can be sure that every single tool is built with you in mind. They are designed to ensure the minimum stress on the human body, while performing the required task exceptionally well.

Priceless also offers the Pro series tool cabinets, combining the high quality tools and foam into a portable tool control cabinet. These cabinets offer a proximity reader, supervisor authorisation, and can be provided with individual tool control.

Speak to a member of the Priceless sales team to customize a kit to your specification.



Two-tone foam layers are laser cut for individual tools.

Tugs in use at AirVenture Oshkosh



The West Ramp Rats

The versatile Priceless Aviation tugs in action moving aircraft of all sizes. The tugs are piloted by The West Ramp Rats, a group of dedicated volunteers that offer their services year after year at the annual AirVenture Oshkosh show in Oshkosh, Wisconsin. They move aircraft throughout the display grounds. This is a great showcase of our tugs and the crew offers invaluable feedback for future products.





Priceless Aviation Products and Red Box International

Priceless Aviation Products, based in Lawrenceville, Georgia USA, and Red Box International are working together in a manufacturing/distribution partnership. Red Box International is a leading designer/manufacturer of aircraft power supply products in the United Kingdom. This partnership strengthens the products offered by both companies. Adding the popular line of Red Box Ground Power Units to Priceless Aviation Products Aircraft Tugs offers our customers the best of both companies.

Priceless Aviation Products is also marketed through the Red Box International network in the U.K. and E.C. and has been in place since the early 1990's. Together since 2010, we are able to reach a larger segment of the industry in a much more efficient manner. Joint participation will allow both companies to present more products at more expositions around the world.

Priceless Aviation Products was utilized at the Historic Wright Brothers First Flight Centennial® Celebration in 2003, the EAA Air Show in Oshkosh, Wisconsin, AOPA and Sun 'n Fun to assist in the movement of aircraft.

Priceless Aviation Products: www.pricelessaviation.com
Red Box International: www.redboxpower.com



PRICELESS
AVIATION PRODUCTS®

© 2014 Priceless Aviation Products 14075031114

362 Industrial Park Drive • Lawrenceville, GA 30046 USA
770 962-6188 • Toll Free: 877 206-5116 • FAX: 770 277-4199
sales@pricelessaviation.com • www.pricelessaviation.com



Priceless Aviation Products

362 Industrial Park Drive • Lawrenceville, GA 30046 USA
770 962-6188 • Toll Free: 877 206-5116 • FAX: 770 277-4141
www.pricelessaviation.com