



1995 Show Catalog

"Sudden Service"
Atlanta Attachment Company



Corporate Headquarters • Lawrenceville, Georgia

(on the cover)

Our staff of sales consultants and service technicians have the experience and the means to respond to your needs. When you say service we deliver
"Sudden Service"

the ***"Sudden Service"*** Team

Pictured from left to right: Pat Feagan, Bill Durden, Leslie Dorough, Al Lopez, Howard Hodgins, Larry Price, Sam Mabe, Ken Holmes, Michael Pate, Jeff Moore, William Richey, George Huddleston, Mark Tullis, Elvin Price, Wendell Piper, Don Whidby, James Atkinson, Henry Ewing, Larkin Bramblett, Todd Price, Warren Oxley, Jackie Wyrick, Bob Paust, Terry Coker, Frank Campos, George Hasenbein, John Price.



FRONT

Cover

"Sudden Service" Sales and Service Team

A

Index

B

Elvin Price: Chairman

C

Wendell Piper: President & CEO

D

Sales & Service

E

International Sales

F

Statement of Corporate Vision

G

The Team

PAGE

MODEL

PRODUCT

1

AAC211

Automatic Two Needle Sleeve Hemmer

2

AAC213

Automatic Two Needle Hemming, Sleeves, and Bottoms

3

AP22E4

Tee Shirt Collar Set and Tape

4

AP23

Automatic Rib Knit Cuff Setting Station

5

AP24

Automatic Rib Knit Leg Cuff Setting Station

6

AP26S

Automatic Backlatch System

7

AP263

Automatic Short Sleeve Closing Workstation w/Backlatch

8

AP264

Automatic Long Sleeve Closing Workstation w/Backlatch

9

AP28

Electronic Metering Device

10

AT116K

Programmable Fast Action Knife

11

AT116L

Programmable Jeans Front Pocket Taping System

12

273-34

Circular Collar Setting and Taping

13

273-4

Fashion Collar Setting and Taping

14

350-25

Spiral Elastic Clean Finish Waist Band Folder

15

350-50

Automatic Clean Finish Elastic Waistband Station

New!

16

425-14

Spot Elastic Waistband

17

951

Locker Patch Setting Station

New!

18

1276U

Cylinder Arm Conversion Kit

19

1278-6

Automatic Rib Knit Bottom Band Setting Station

New!

20

1278-7

Automatic Circular Elastic Waistband Setting Station

New!

21

1536

Automatic Elastic Leg Hemming Station

22

1800P

Programmable Center Knife Gauge Set

23

1907A

Placket Shirt Collar Set & Tape

24

3800P

Automatic Set-In Pocket Workstation

BACK

H

Notes

Cover

Map & Directories

CORPORATE & MFG

Atlanta Attachment Company

401 Industrial Park Drive
Lawrenceville, GA 30245
(770) 963-7369
(770) 963-7641 FAX

INTERNATIONAL

Atlanta Attachment International

401 Industrial Park Drive
Lawrenceville, GA 30245
(770) 995-7395
(770) 963-7641 FAX

MIAMI, FLA

Atlanta Attachment, Miami

2007 NW 79th Avenue
Miami, FL 33122
(305) 559-2611
(305) 559-2566 FAX

SANTA ANA, CA

Atlanta Attachment, West

608 East 4th St
Santa Ana, CA 92701
(714) 953-7680
(714) 953-1042 FAX

B



Chairman

Atlanta Attachment Company is now in its 26th year of business. It has been an overwhelming experience to see our company grow from a garage shop in 1969, to the present 115,000 square foot, state-of-the-art manufacturing facilities with over 200 employees.

We owe our success and the growth of Atlanta Attachment Company to you, our customers, our many friends in the supply industry, and our valued and loyal employees.

With this thought in mind, we rededicate ourselves to continuing the development and manufacture of the highest quality automated workstations, folders, attachments and labor saving devices available to the sewn products industry.

We are committed to maintaining and improving our policy of **"Sudden Service"**®, so our customers may also prosper in this competitive global market.

We invite you to review this catalog and use it for reference. Please call or fax for immediate response to all your production needs.

"Sudden Service" has been our motto for 26 years and is more important than ever. We invite you to look over the enclosed literature and contact us for additional information.



Elvin Price
Chairman

"No one ever achieves success without the help of others"

With this thought in mind we gratefully dedicate this booklet to you, our customer, our many friends in the supply industry, and our valued employees.

There are many ways one can express thanks or gratitude, verbal, written, gifts, etc. As we were in the process of preparing this, our largest catalog ever, many of our partners came to mind. How can we say thanks and what can we do to express our gratitude.

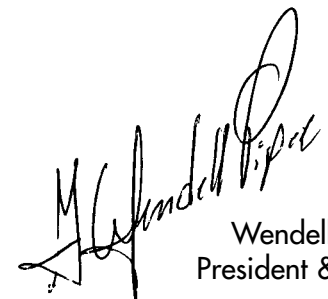
We feel the best way to say a special thanks is to rededicate ourselves to the original commitment, a commitment to giving you quality, state-of-the-art products, and support with our unequalled **"Sudden Service"**.

Yes, to us at Atlanta Attachment, it is more than words, it is more than a logo, it is the fundamental belief of our company.

Atlanta Attachment has recently taken the steps to meet your needs in Mexico, the Caribbean, Central and South America. Our international division is now fully operational in our Miami facility – ready, willing and able to move forward with you into these markets.

The international division has shown record-breaking growth over the last year, and we look forward to sharing with you the same partnerships in these new markets.

In closing, many thanks to you for these many years, and we, indeed, thank you for the promise of an exciting future together.

A handwritten signature in dark ink, appearing to read "Wendell Piper". The signature is fluid and cursive.

Wendell Piper
President & CEO

"The best way to say a special thanks is to rededicate ourselves to the original commitment, a commitment to giving you quality, state-of-the-art products, and support with our **"Sudden Service"** "



Sales & Service Atlanta

SALES



Howard Hodgins
National Accounts



Jackie Wyrick
National Accounts



George Hasenbein
National Accounts



Don Whidby
Sales



James Atkinson
Sales



Mark Tullis
Sales



Pat Feagan
Sales



John Price
Sales

SERVICE



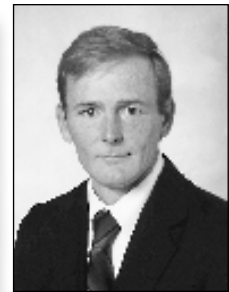
William Richey
Service Manager



Bill Durden
Product Specialist



Terry Coker
Product Specialist



Steve English
Product Specialist

Atlanta Attachment Company is the recognized sewn products industry leader in automated workstations, labor saving devices, folders and ergonomic risk reduction. The Company, founded in 1969, has made its policy of "SUDDEN SERVICE" a way of life in all aspects of operation. Our entire staff is dedicated to providing three day shipments of most custom folders and attachments. Special gauge sets and other work aids are available in 10 working days or less.

Call our expert sales staff for
"Sudden Service"
on all your sewing needs.



INTERNATIONAL SALES



Bob Paust
Director
International Division



Todd Price
Admin. Sales Assistant
Miami



Carlos A. Bermudez
Sales
Miami



Al Lopez
Sales/Service
Atlanta



Frank Campos
Sales
Miami



Leslie Dorough
Admin. Sales Assistant
Atlanta



Contact...
Atlanta Attachment International
for the **"Sudden Service"**
representative nearest you... throughout the world!

CORPORATE & MFG

Atlanta Attachment Company
401 Industrial Park Drive
Lawrenceville, GA 30245
(770) 963-7369
(770) 963-7641 FAX

INTERNATIONAL

Atlanta Attachment International
401 Industrial Park Drive
Lawrenceville, GA 30245
(770) 995-7395
(770) 963-7641 FAX

MIAMI, FLA

Atlanta Attachment, Miami
2007 NW 79th Avenue
Miami, FL 33122
(305) 559-2611
(305) 559-2566 FAX

SANTA ANA, CA

Atlanta Attachment, West
608 East 4th St
Santa Ana, CA 92701
(714) 953-7680
(714) 953-1042 FAX

Atlanta Attachment Company Statement of Corporate Vision



will be primarily a manufacturer and provider of products and services to our customers which are of high quality and provide overall value for their investment.

We will be noted for the delivery of these products and services on a timely basis.

We will make use of advanced technology where practical and economical.

The highest standards for material selection appropriate to the product / service will be maintained.

We will strive to provide a work environment of integrity, respect and dignity for employees and all whom come in contact with our business.

Employees will be recruited and maintained who are creative, technically competent and productivity oriented.

Management systems and processes will be developed and maintained which emphasize team work, a high level of quality assurance and flexibility.

We will be a profitable company and distribute this wealth in fair and equitable ways after sufficient reinvestment for necessary long term company growth.

We will be responsible to the environment and to the communities within which we do business.

We will diversify into various markets and product lines in order to leverage our expertise, balance our work demands, provide new opportunities for growth and hedge against downturns in any one industry.



Elvin C. Price
Chairman



the "Team"

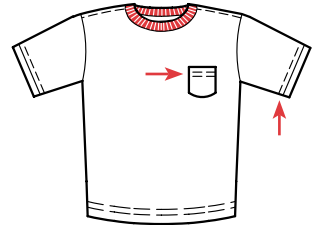
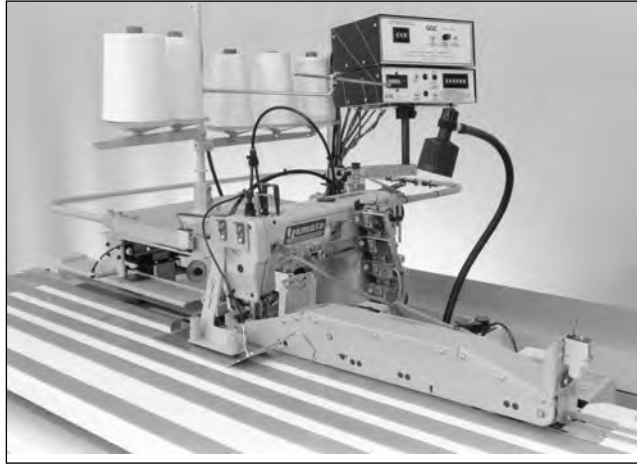
R&D
CAD/CAM
Machining/Fabrication
Assembly
Sew Off/Testing
Marketing
Advertising
Sales
Service
Accounting
Management
Support

***"No one ever achieves
success without the
help of others"***

1

Model AAC211

Automatic Two Needle Sleeve Hemmer



Sleeves • Pockets • Bottoms

- Electronic motor & controls
- Reliable edge trimmer
- Fold & stack or stack only
- Stacker available for bottom hemming
- Reinforcing tape or lining in hem also available

DESCRIPTION

An electronically controlled workstation consisting of a conveyerized downturn hemming apparatus with two or three needle bottom or top and bottom coverstitch sewing head, electronic motor, automatic edge trim and cut apart, and self-contained waste disposal.

OPERATION

The operator places parts to an edge guide and initiates sewing. The unit will continue sewing as long as parts are placed on the conveyor within a specific distance. The sew cycle will stop if the operator fails to position the next part, thereby reducing thread waste. Average production on sleeves is 350 – 400 dozen pair per 8 hours.

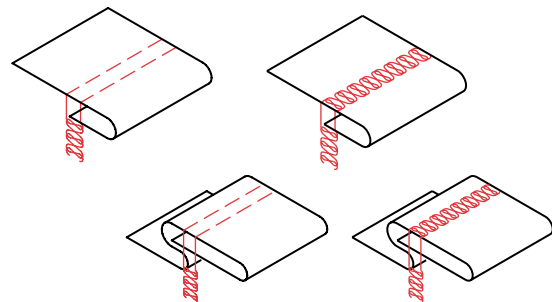
MACHINE CLASS

Most industrial coverstitch machines

OPTIONS

Stacker, fold-in-half and stack, and bottom hem stacking with return conveyor.

- Pick & stack flat
- Fold-in-half stacker
- Bottom hem stacker with return conveyor
- Combination picker & stack fold-in-half stacker



This equipment is protected by one or more of the following patents: 4,644,883; 4,038,933; 5,203,270; 5,159,889; 5,134,947; 4,886,005; 4,432,294; 4,280,421; 4,466,367; 5,307,750; 5,437,238. Other U.S. and Foreign Patents Pending.

CORPORATE & MFG

Atlanta Attachment Company
401 Industrial Park Drive
Lawrenceville, GA 30245
(770) 963-7369
(770) 963-7641 FAX

INTERNATIONAL

Atlanta Attachment International
401 Industrial Park Drive
Lawrenceville, GA 30245
(770) 995-7395
(770) 963-7641 FAX

MIAMI, FLA

Atlanta Attachment, Miami
2007 NW 79th Avenue
Miami, FL 33122
(305) 559-2611
(305) 559-2566 FAX

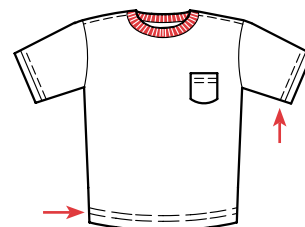
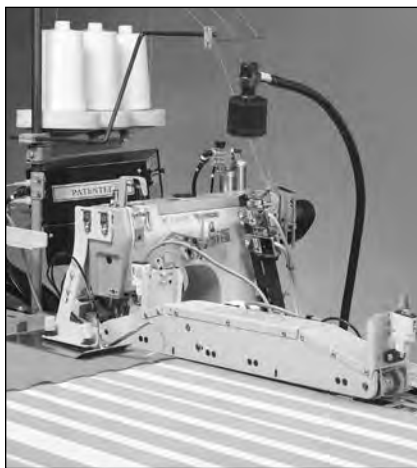
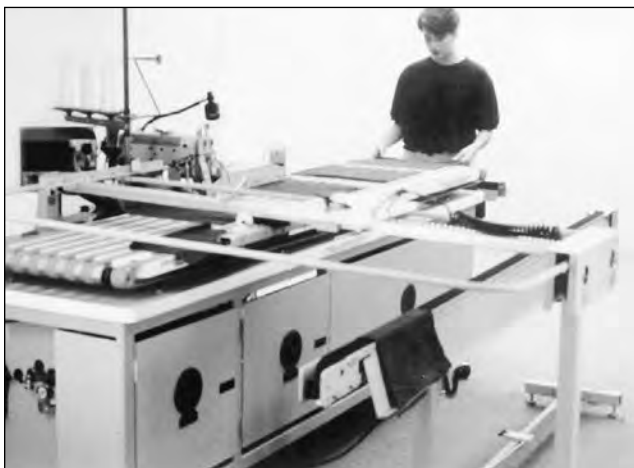
SANTA ANA, CA

Atlanta Attachment, West
608 East 4th St
Santa Ana, CA 92701
(714) 953-7680
(714) 953-1042 FAX

2

Model AAC213

Automatic Two Needle Hemming, Sleeves, & Bottoms



Sleeves • Pockets • Bodies

- Electronic motor & controls
- Reliable edge trimmer
- Fold-in-half & stack or stack only
- Stacker & return conveyor for bottom hemming available
- Reinforcing tape or lining in hem also available

DESCRIPTION

An electronically controlled workstation consisting of a conveyORIZED downturn hemming apparatus with two or three needle bottom or bottom & top coverstitch sewing head, electronic motor, automatic edge trim and cut apart, and self-contained waste disposal.

OPERATION

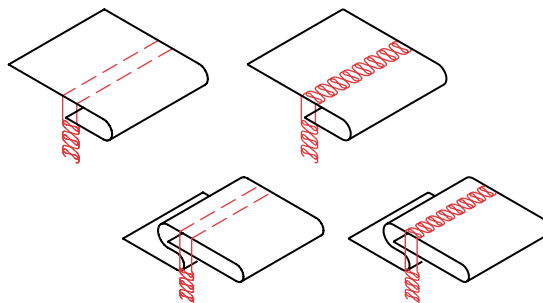
The operator places parts to an edge guide and initiates sewing. The unit will continue sewing as long as parts are placed on the conveyor within a specific distance. The sew cycle will stop if the operator fails to position the next part, thereby reducing thread waste. Average production on sleeves is 350 – 400 dozen pair per 8 hour shift.

MACHINE CLASS

Most industrial coverstitch machines

OPTIONS

Choose our basic Model AAC211 pocket/sleeve hemmer, add our picker stacker, fold-in-half stacker, return conveyor, or any combination. For more versatility, choose our Model AAC213 for sleeves/pockets/bodies complete with combination picker stacker, add our fold-in-half stacker with return conveyor. Our modular design allows you the flexibility to pick and combine components, giving you a custom system that best meets your requirements without paying a custom price.



This equipment is protected by one or more of the following patents: 4,644,883; 4,038,933; 5,203,270; 5,159,889; 5,134,947; 4,886,005; 4,432,294; 4,280,421; 4,466,367; 5,307,750; 5,437,238. Other U.S. and Foreign Patents Pending.

CORPORATE & MFG

INTERNATIONAL

MIAMI, FLA

SANTA ANA, CA

Atlanta Attachment Company

401 Industrial Park Drive
Lawrenceville, GA 30245
(770) 963-7369
(770) 963-7641 FAX

Atlanta Attachment International

401 Industrial Park Drive
Lawrenceville, GA 30245
(770) 995-7395
(770) 963-7641 FAX

Atlanta Attachment, Miami

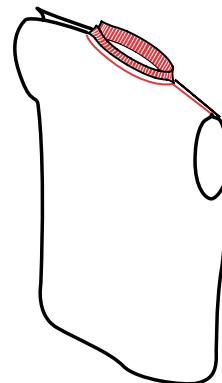
2007 NW 79th Avenue
Miami, FL 33122
(305) 559-2611
(305) 559-2566 FAX

Atlanta Attachment, West

608 East 4th St
Santa Ana, CA 92701
(714) 953-7680
(714) 953-1042 FAX

3

Model **AP22E4** Shirt Collar Set and Tape



Collars • Cuffs • Bottom Bands

- Meters rib tape to produce consistently uniform sizing
- Push button size changes
- Electronic metering provides consistent repeatability
- Private label prior to shipping

DESCRIPTION

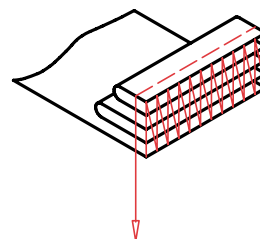
The shirt collar is set with one shoulder closed and tape applied in one operation. This provides a shoulder seam to shoulder seam display tape and allows tape topstitch and label as final operation.

OPERATION

Consists of a variable speed rib knit collar tape feeder and a movable taping folder. The collar is applied to a shirt with one shoulder open. The Taping is engaged at start of sew and disengaged as the shoulder seam approaches the presser foot. The AP22E4 is adaptable to all industrial overlock machines.

MACHINE CLASS

Self-contained unit applicable to most industrial overlock or coverstitch machinery



This equipment is protected by one or more of the following patents: 4,644,883; 4,038,933; 5,203,270; 5,159,889; 5,134,947; 4,886,005; 4,432,294; 4,280,421; 4,466,367; 5,307,750; 5,437,238. Other U.S. and Foreign Patents Pending.

CORPORATE & MFG

Atlanta Attachment Company
401 Industrial Park Drive
Lawrenceville, GA 30245
(770) 963-7369
(770) 963-7641 FAX

INTERNATIONAL

Atlanta Attachment International
401 Industrial Park Drive
Lawrenceville, GA 30245
(770) 995-7395
(770) 963-7641 FAX

MIAMI, FLA

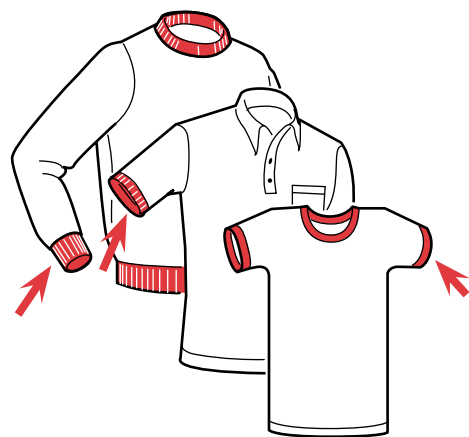
Atlanta Attachment, Miami
2007 NW 79th Avenue
Miami, FL 33122
(305) 559-2611
(305) 559-2566 FAX

SANTA ANA, CA

Atlanta Attachment, West
608 East 4th St
Santa Ana, CA 92701
(714) 953-7680
(714) 953-1042 FAX

4

Model **AP23** Automatic Rib Knit Cuff Station



- Automatic start and stop
- Automatic cut apart
- Microprocessor controlled
- Electronic metering
- Minimal tape waste
- Automatic stacker
- Bundle return

DESCRIPTION

An electronically controlled cuff setting station, this unit is designed to form rib knit tape up to 8 inches wide into a cuff band and sew the band onto the sleeves. The station consists of an interchangeable sewing head and power console, electric tape feeding device, automatic cut apart knife, take away conveyor with automatic stacker, an inclined bundle return conveyor, and preloading conveyor. Rolled or festooned rib knit tape may be fed from top or bottom.

OPERATION

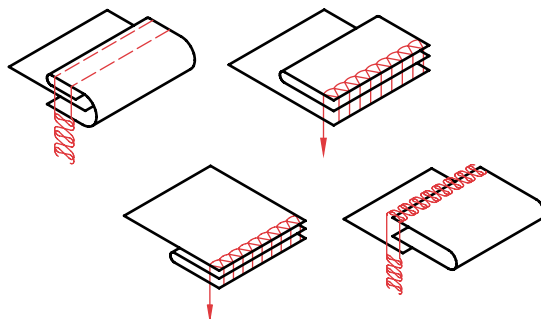
The operator places the sleeve at the presser foot and the material is sensed; sewing is then automatically started; The trailing edge of the sleeve is sensed and the cuff is cut apart. The finished sleeve is carried to the stacker by the upper conveyor. The operator loads sleeves continuously. If for any reason another piece is not loaded, the sewing will automatically stop, saving material. At the completion of a bundle, a manual switch may be pressed to return the bundle to the operator or deliver it to the next operation. Production in excess of 400 dozen pair of sleeves in 8 hours.

MACHINE CLASS

All industrial safety, overlock or coverstitch machines.

OPTIONS

- Upper rib tape delivery
- Lower rib tape delivery



This equipment is protected by one or more of the following patents: 4,644,883; 4,038,933; 5,203,270; 5,159,889; 5,134,947; 4,886,005; 4,432,294; 4,280,421; 4,466,367; 5,307,750; 5,437,238. Other U.S. and Foreign Patents Pending.

CORPORATE & MFG

Atlanta Attachment Company
401 Industrial Park Drive
Lawrenceville, GA 30245
(770) 963-7369
(770) 963-7641 FAX

INTERNATIONAL

Atlanta Attachment International
401 Industrial Park Drive
Lawrenceville, GA 30245
(770) 995-7395
(770) 963-7641 FAX

MIAMI, FLA

Atlanta Attachment, Miami
2007 NW 79th Avenue
Miami, FL 33122
(305) 559-2611
(305) 559-2566 FAX

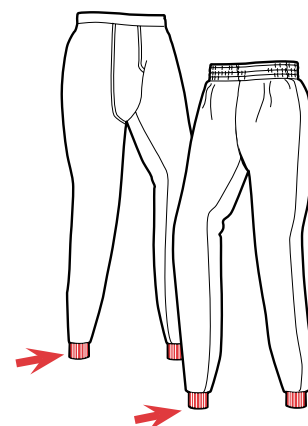
SANTA ANA, CA

Atlanta Attachment, West
608 East 4th St
Santa Ana, CA 92701
(714) 953-7680
(714) 953-1042 FAX

5

Model AP24

Automatic Rib Knit Leg Cuff Setting Station



Leg Cuffing

- Indexes bundles automatically
- Available for overlock & coverstitch machines
- Auto start/stop
- Auto cut apart
- Minimal material waste
- Electronic metering
- Automatic piece counting
- Microprocessor controls

DESCRIPTION

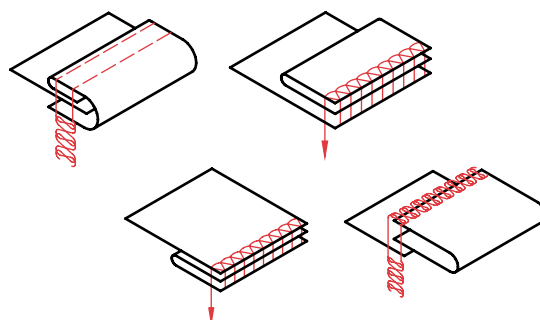
An electronically controlled leg cuff setting station. This unit is designed to form rib knit tape up to 8 inches wide into a cuff band and sew the band onto the legs. The station consists of a swing head and power console, electronic tape feeding device, automatic cut apart knife, tandem variable speed pullers and ergonomic tabling with pneumatic bundle clamp.

OPERATION

The operator places the leg at the presser foot and the material is sensed; sewing is then automatically started. The trailing edge of the leg is sensed and the cuff is cut apart. The finished leg then falls from the rear of the unit. The operator loads legs continuously. If for any reason another piece is not loaded, the sewing will automatically stop, saving material.

OTHER MODELS

AP-23, 1535E, 1536



This equipment is protected by one or more of the following patents: 4,644,883; 4,038,933; 5,203,270; 5,159,889; 5,134,947; 4,886,005; 4,432,294; 4,280,421; 4,466,367; 5,307,750; 5,437,238. Other U.S. and Foreign Patents Pending.

CORPORATE & MFG

Atlanta Attachment Company
401 Industrial Park Drive
Lawrenceville, GA 30245
(770) 963-7369
(770) 963-7641 FAX

INTERNATIONAL

Atlanta Attachment International
401 Industrial Park Drive
Lawrenceville, GA 30245
(770) 995-7395
(770) 963-7641 FAX

MIAMI, FLA

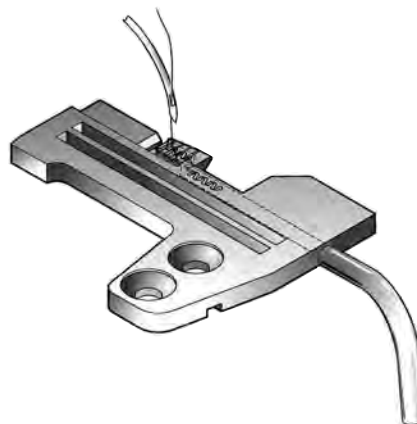
Atlanta Attachment, Miami
2007 NW 79th Avenue
Miami, FL 33122
(305) 559-2611
(305) 559-2566 FAX

SANTA ANA, CA

Atlanta Attachment, West
608 East 4th St
Santa Ana, CA 92701
(714) 953-7680
(714) 953-1042 FAX

6

Model **AP26S** Automatic Backlatch System



The most simple, trouble-free backlatch in the world!

- Instantaneous tensionless backlatch
- Minimal operator training
- Reduces needle & parts breakage
- Eliminates repairs
- No knots or skipped stitches

DESCRIPTION

A pneumatically controlled and operated system consisting of patented hollow chainer tongue throat plate, chain cutting knife, automatic foot lift and pneumatic control package.

OPERATION

The operator folds and places the part to be sewn at or under the presser foot in normal fashion. As the sew treadle is depressed, the automatically controlled vacuum generator draws the chain from the previous piece toward the operator into the hollow chainer tongue and the chain is sewn into the seam. Upon completion of sew, the operator draws the piece to the rear of the unit and cuts the chain by depressing a knee or heel switch. The amount of chain which remains is automatically drawn into the chainer tongue to form the backlatch for the next piece. Positioning motor is not required.

MACHINE CLASS

Most industrial overlocks.

A pneumatically controlled and operated system consisting of patented hollow chainer tongue throat plate, chain cutting knife, automatic foot lift and automatic control package.

OTHER MODELS

AP26E
AP26Q
AP263
AP264
AP266

This equipment is protected by one or more of the following patents: 4,644,883; 4,038,933; 5,203,270; 5,159,889; 5,134,947; 4,886,005; 4,432,294; 4,280,421; 4,466,367; 5,307,750; 5,437,238. Other U.S. and Foreign Patents Pending.

CORPORATE & MFG

Atlanta Attachment Company

401 Industrial Park Drive
Lawrenceville, GA 30245
(770) 963-7369
(770) 963-7641 FAX

INTERNATIONAL

Atlanta Attachment International

401 Industrial Park Drive
Lawrenceville, GA 30245
(770) 995-7395
(770) 963-7641 FAX

MIAMI, FLA

Atlanta Attachment, Miami

2007 NW 79th Avenue
Miami, FL 33122
(305) 559-2611
(305) 559-2566 FAX

SANTA ANA, CA

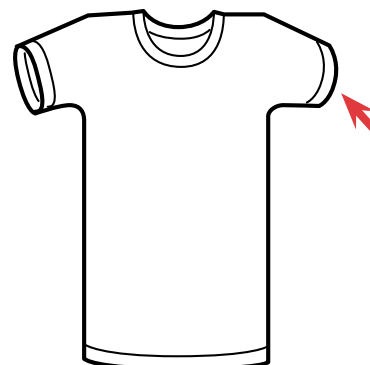
Atlanta Attachment, West

608 East 4th St
Santa Ana, CA 92701
(714) 953-7680
(714) 953-1042 FAX

7

Model AP263

Automatic Short Sleeve Closing Workstation



The most simple, trouble-free Backlatch in the world!

- Auto start
- Auto edge guiding
- Auto Back-Tack
- Auto thread cutter
- Auto thread saver
- Auto bundle return
- Auto count
- Auto stack

DESCRIPTION

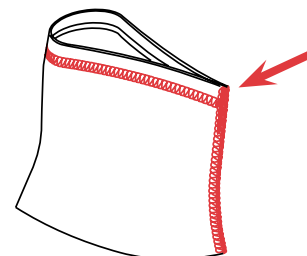
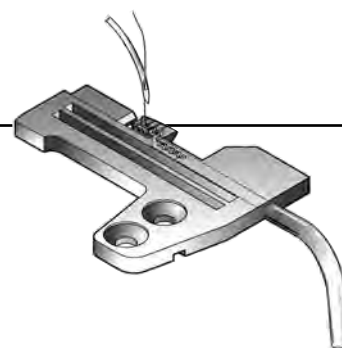
An electronically controlled sleeve closing station with automatic backlatch designed to close short sleeve tee shirt sleeves. This unit includes positive edge guidance, providing the capability to sew either straight or contoured seams.

OPERATION

An operator folds the sleeve in half and presents the sleeve to the sewing head. An eye senses the part and the presser foot drops, sew begins and the electronic edge guide engages. As the piece is completed, the thread chain is cut and the part is automatically stacked. The operator prepares the next piece during the automatic sew cycle.

MACHINE CLASS

All industrial overlock machines.



This equipment is protected by one or more of the following patents: 4,644,883; 4,038,933; 5,203,270; 5,159,889; 5,134,947; 4,886,005; 4,432,294; 4,280,421; 4,466,367; 5,307,750; 5,437,238. Other U.S. and Foreign Patents Pending.

CORPORATE & MFG

Atlanta Attachment Company
401 Industrial Park Drive
Lawrenceville, GA 30245
(770) 963-7369
(770) 963-7641 FAX

INTERNATIONAL

Atlanta Attachment International
401 Industrial Park Drive
Lawrenceville, GA 30245
(770) 995-7395
(770) 963-7641 FAX

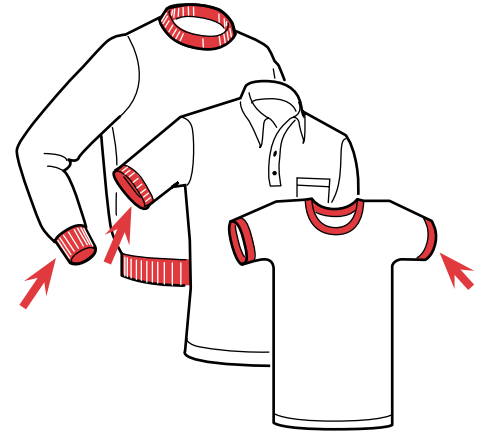
MIAMI, FLA

Atlanta Attachment, Miami
2007 NW 79th Avenue
Miami, FL 33122
(305) 559-2611
(305) 559-2566 FAX

SANTA ANA, CA

Atlanta Attachment, West
608 East 4th St
Santa Ana, CA 92701
(714) 953-7680
(714) 953-1042 FAX

8

Model AP264**Automatic Long Sleeve Closing Workstation**

Featuring the patented hollow chaining tongue backlatch, the most simple, trouble-free Backlatch in the world!

- Auto start
- Electronic edge guidance
- Auto tensionless backlatch
- Auto thread cutter
- Auto count
- Auto stack

DESCRIPTION

An electronically controlled sleeve closing station with automatic backlatch designed to close tee shirt type sleeves. This unit includes positive edge guidance, providing the capability to sew either straight or contoured seams.

OPERATION

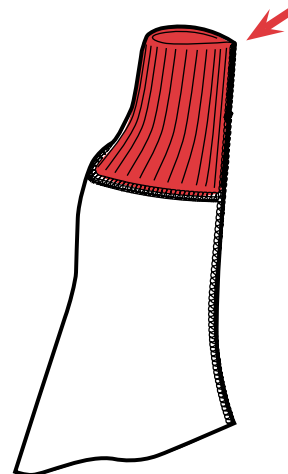
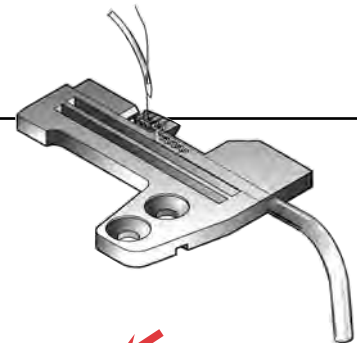
An operator folds a shirt sleeve in half length wise and aligns the hemmed or cuffed end and ply edge and presents the part to the machine. An eye senses the part and the presser foot drops, sew begins and the electronic edge guide engages. As the piece is completed, the thread chain is cut and the part is automatically stacked. The operator prepares the next piece during the automatic sew cycle.

MACHINE CLASS

Most overlock machines.

OPTIONS

Indexing bundle table



This equipment is protected by one or more of the following patents: 4,644,883; 4,038,933; 5,203,270; 5,159,889; 5,134,947; 4,886,005; 4,432,294; 4,280,421; 4,466,367; 5,307,750; 5,437,238. Other U.S. and Foreign Patents Pending.

CORPORATE & MFG**INTERNATIONAL****MIAMI, FLA****SANTA ANA, CA****Atlanta Attachment Company**

401 Industrial Park Drive
Lawrenceville, GA 30245
(770) 963-7369
(770) 963-7641 FAX

Atlanta Attachment International

401 Industrial Park Drive
Lawrenceville, GA 30245
(770) 995-7395
(770) 963-7641 FAX

Atlanta Attachment, Miami

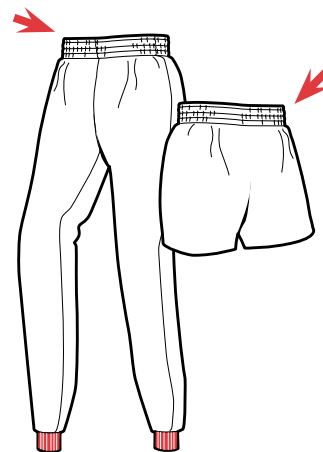
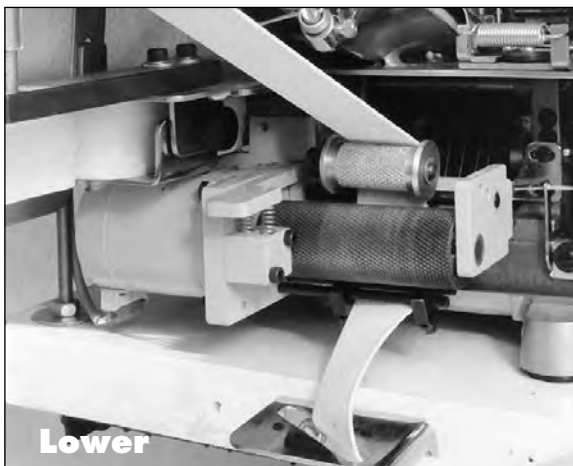
2007 NW 79th Avenue
Miami, FL 33122
(305) 559-2611
(305) 559-2566 FAX

Atlanta Attachment, West

608 East 4th St
Santa Ana, CA 92701
(714) 953-7680
(714) 953-1042 FAX

9

Model AP28 Electronic Metering Device



Upper or Lower Metering Device

- Easy digital setting
- Non slip metering head
- Available for all machines
- Upper or lower metering
- Dual control available

DESCRIPTION

An electronically controlled metering device with a stepping motor drive. This unit gives accurate repeatable size control. The unit is available with single or dual controls for intermittent metering.

OPERATION

The electronic control utilizes a synchronizer to activate the stepping motor driven metering head in unison with sewing speed. Tension settings are changed by the push of an indicator.

MACHINE CLASS

Free stand unit to fit all sewing heads and applications.

OPTIONS

Dual control for intermittent metering

This equipment is protected by one or more of the following patents: 4,644,883; 4,038,933; 5,203,270; 5,159,889; 5,134,947; 4,886,005; 4,432,294; 4,280,421; 4,466,367; 5,307,750; 5,437,238. Other U.S. and Foreign Patents Pending.

CORPORATE & MFG

Atlanta Attachment Company

401 Industrial Park Drive
Lawrenceville, GA 30245
(770) 963-7369
(770) 963-7641 FAX

INTERNATIONAL

Atlanta Attachment International

401 Industrial Park Drive
Lawrenceville, GA 30245
(770) 995-7395
(770) 963-7641 FAX

MIAMI, FLA

Atlanta Attachment, Miami

2007 NW 79th Avenue
Miami, FL 33122
(305) 559-2611
(305) 559-2566 FAX

SANTA ANA, CA

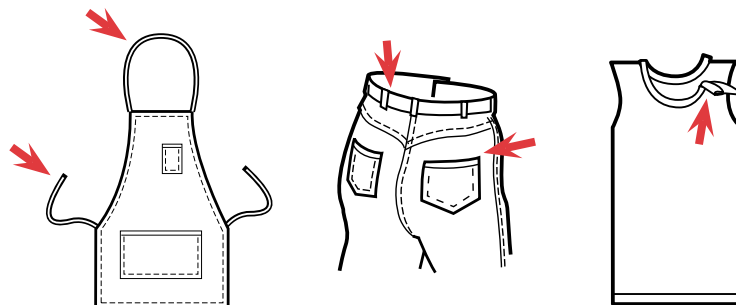
Atlanta Attachment, West

608 East 4th St
Santa Ana, CA 92701
(714) 953-7680
(714) 953-1042 FAX

10

Model **AT116K**

Programmable Fast Action Knife



**Binding • Taping • Belt Loops • Apron Strings • Cap
Sweat Bands • Collarettes**

DESCRIPTION

An electronically controlled pneumatic scissor type knife designed to cut apart and/or trim continuous sewn material such as binding, belt loops, waistbands, etc., up to 1 1/2" wide. This unit consists of a fast action toggle link knife, a keypad programmable control box with LCD readout, edge sensing and stitch count capability, and automatic stop to prevent material waste.

OPERATION

The operator selects any programmed function by pressing numbers on the keypad (the stitch count and cut function are clearly visible on an LCD readout). Each sequence may be inspected or altered by following the program sequence; for example, program one, cut leading and trailing edge with automatic binding saver: material is inserted into a binder and depressing the sew treadle initiates sewing. A reflective eye senses the leading edge and the binding is cut after a preset number of stitches without stopping. Sewing continues until the trailing edge is sensed and after counting the preset

number of stitches the binding is cut and sewing is automatically stopped to prevent material waste. Any number of cut and trim values may be entered and retained for different styles or sizes.

MACHINE CLASS

Most industrial sewing machines.

This equipment is protected by one or more of the following patents: 4,644,883; 4,038,933; 5,203,270; 5,159,889; 5,134,947; 4,886,005; 4,432,294; 4,280,421; 4,466,367; 5,307,750; 5,437,238. Other U.S. and Foreign Patents Pending.

CORPORATE & MFG

Atlanta Attachment Company

401 Industrial Park Drive
Lawrenceville, GA 30245
(770) 963-7369
(770) 963-7641 FAX

INTERNATIONAL

Atlanta Attachment International

401 Industrial Park Drive
Lawrenceville, GA 30245
(770) 995-7395
(770) 963-7641 FAX

MIAMI, FLA

Atlanta Attachment, Miami

2007 NW 79th Avenue
Miami, FL 33122
(305) 559-2611
(305) 559-2566 FAX

SANTA ANA, CA

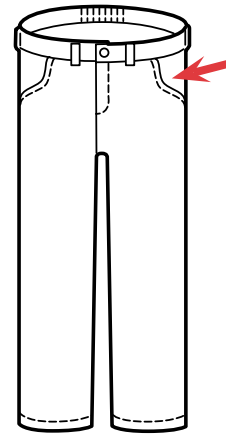
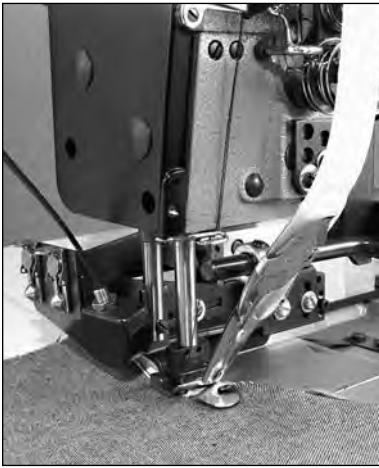
Atlanta Attachment, West

608 East 4th St
Santa Ana, CA 92701
(714) 953-7680
(714) 953-1042 FAX

11

Model AT116L

Programmable Jeans Front Pocket Taping System



Binding • Taping • Belt Loops • Apron Strings • Cap Sweat Bands • Collarettes

DESCRIPTION

An electronically controlled pneumatic scissor type knife designed to cut apart and/or trim continuous sewn material such as binding, belt loops, waistbands, etc., up to 1 1/2" wide. This unit consists of a fast action toggle link knife, a keypad programmable control box with LCD readout, edge sensing and stitch count capability, and automatic stop to prevent material waste.

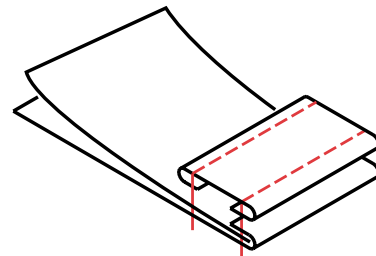
OPERATION

The operator selects any programmed function by pressing numbers on the keypad (the stitch count and cut function are clearly visible on an LCD readout). Each sequence may be inspected or altered by following the program sequence; for example, program one, cut leading and trailing edge with automatic binding saver: material is inserted into a binder and depressing the sew treadle initiates sewing. A reflective eye senses the leading edge and the binding is cut after a preset number of stitches without stopping. Sewing continues until the trailing edge is sensed and after counting the preset

number of stitches the binding is cut and sewing is automatically stopped to prevent material waste. Any number of cut and trim values may be entered and retained for different styles or sizes.

MACHINE CLASS

Most industrial sewing machines.

This equipment is protected by one or more of the following patents: 4,644,883; 4,038,933; 5,203,270; 5,159,889; 5,134,947; 4,886,005; 4,432,294; 4,280,421; 4,466,367; 5,307,750; 5,437,238. Other U.S. and Foreign Patents Pending.

CORPORATE & MFG

Atlanta Attachment Company
401 Industrial Park Drive
Lawrenceville, GA 30245
(770) 963-7369
(770) 963-7641 FAX

INTERNATIONAL

Atlanta Attachment International
401 Industrial Park Drive
Lawrenceville, GA 30245
(770) 995-7395
(770) 963-7641 FAX

MIAMI, FLA

Atlanta Attachment, Miami
2007 NW 79th Avenue
Miami, FL 33122
(305) 559-2611
(305) 559-2566 FAX

SANTA ANA, CA

Atlanta Attachment, West
608 East 4th St
Santa Ana, CA 92701
(714) 953-7680
(714) 953-1042 FAX



Set and tape circular knit collars in one operation

- Tape shoulder seam to shoulder seam only
- No production loss at collar setting
- Topstitch at final operation allows shirt to be finished, folded, warehoused and labeled as sold
- Pneumatic operation
- Simple in-house installation

DESCRIPTION

A pneumatically controlled and operated taping folder designed to apply tape to a circular knit collar while the collar is being sewn to the shirt.

OPERATION

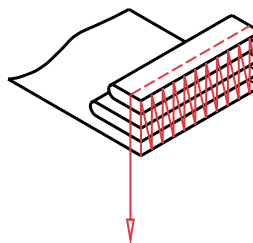
A touch of the knee switch shifts the folder to the left, bringing the tape in line with the presser foot – heel the treadle to raise the presser foot – load the circular collar over the rollers and under the foot – load the shirt over the rollers and under the foot – drop the foot and sew – approximately 1" from the shoulder seam the folder is shifted to the right by depressing the knee switch – continuation of sew will allow the tape to be cut by the edge trimming knife – this produces a neat rounded finish on the tape. The tape may be inserted or retracted at any point in the operation.

MACHINE CLASS

All industrial overedge machines

AIR REQUIRED

.04 SCFM AT 50 PSI



This equipment is protected by one or more of the following patents: 4,644,883; 4,038,933; 5,203,270; 5,159,889; 5,134,947; 4,886,005; 4,432,294; 4,280,421; 4,466,367; 5,307,750; 5,437,238. Other U.S. and Foreign Patents Pending.

CORPORATE & MFG

Atlanta Attachment Company
401 Industrial Park Drive
Lawrenceville, GA 30245
(770) 963-7369
(770) 963-7641 FAX

INTERNATIONAL

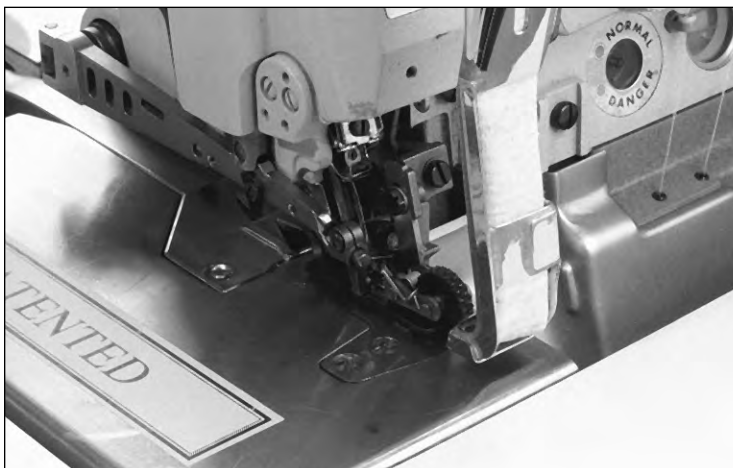
Atlanta Attachment International
401 Industrial Park Drive
Lawrenceville, GA 30245
(770) 995-7395
(770) 963-7641 FAX

MIAMI, FLA

Atlanta Attachment, Miami
2007 NW 79th Avenue
Miami, FL 33122
(305) 559-2611
(305) 559-2566 FAX

SANTA ANA, CA

Atlanta Attachment, West
608 East 4th St
Santa Ana, CA 92701
(714) 953-7680
(714) 953-1042 FAX



Placket Shirt Manufacturing

DESCRIPTION

A pneumatically controlled collar taping folder designed to shift to the left to insert the tape under the presser foot. Upon signal, the folder shifts to the right to allow the tape to be cut by the edge trimming knife. The tape does not extend to the edge of the corners of the placket on either end. Therefore, when the placket is turned, there is no bulk or additional thickness. This improves the overall appearance and reduces problems in the button hole and button sew operations.

OPERATION

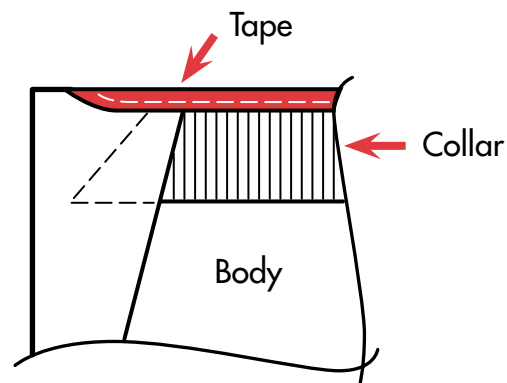
The collar is aligned to the shirt body. The placket is folded over the leading edge of the collar and placed under the foot. The pieces are sewn approximately 1/2" and a touch of the knee switch shifts the folder to the left and taping starts. As the trailing edge of the collar nears the machine, the operator folds the placket over the collar and touches the knee switch. At this point the folder shifts to the right and the tape is cut by the edge trimming knife.

MACHINE CLASS

Most industrial overlocks.

OPTIONS

Patented roller presser foot, Automatic foot lift.



This equipment is protected by one or more of the following patents: 4,644,883; 4,038,933; 5,203,270; 5,159,889; 5,134,947; 4,886,005; 4,432,294; 4,280,421; 4,466,367; 5,307,750; 5,437,238. Other U.S. and Foreign Patents Pending.

ATLANTA, GA

Atlanta Attachment Company

401 Industrial Park Drive
Lawrenceville, GA 30245
(770) 963-7369
(770) 963-7641 FAX

INTERNATIONAL

Atlanta Attachment International

401 Industrial Park Drive
Lawrenceville, GA 30245
(770) 995-7395
(770) 963-7641 FAX

MIAMI, FLA

Atlanta Attachment, Miami

2007 NW 79th Avenue
Miami, FL 33122
(305) 559-2611
(305) 559-2566 FAX

SANTA ANA, CA

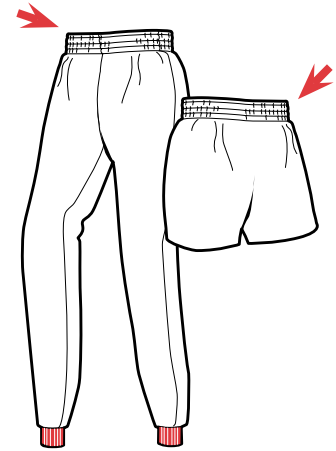
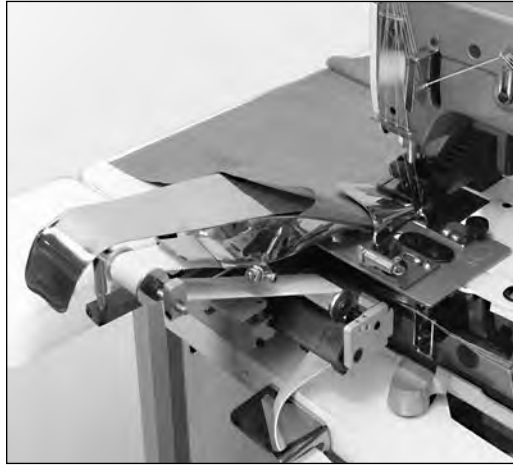
Atlanta Attachment, West

608 East 4th St
Santa Ana, CA 92701
(714) 953-7680
(714) 953-1042 FAX

14

Model 350-25

Clean Finish Elastic Waistband Folder & Spiral Folder



Activewear • Waistbands • Children's Pajamas

A unique short spiral folder for producing clean finish elastic waistbands. This unit reduces skill level and training while increasing production and quality. Ergonomic risks associated with normal hemmers are totally eliminated.

DESCRIPTION

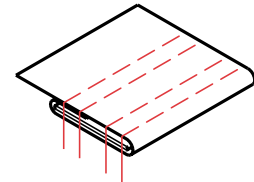
A manually operated patented spiral guiding folder for elastic up to 1 1/2" wide, complete with mounting bracket, edge guide and tight finish cap.

OPERATION

The folder is loaded with elastic supplied through a metering device. The folder guides the elastic to the sewing machine while turning the elastic 180°. The operator depresses the sew treadle while inserting the garment into the folder at an edge guide which controls the amount of turn under. The elastic feeds the garment through the spiral folder causing a tight, clean finish wrap as the material is sewn.

MACHINE CLASS

Most industrial flat bed multi-needle machines



This equipment is protected by one or more of the following patents: 4,644,883; 4,038,933; 5,203,270; 5,159,889; 5,134,947; 4,886,005; 4,432,294; 4,280,421; 4,466,367; 5,307,750; 5,437,238. Other U.S. and Foreign Patents Pending.

CORPORATE & MFG

Atlanta Attachment Company
401 Industrial Park Drive
Lawrenceville, GA 30245
(770) 963-7369
(770) 963-7641 FAX

INTERNATIONAL

Atlanta Attachment International
401 Industrial Park Drive
Lawrenceville, GA 30245
(770) 995-7395
(770) 963-7641 FAX

MIAMI, FLA

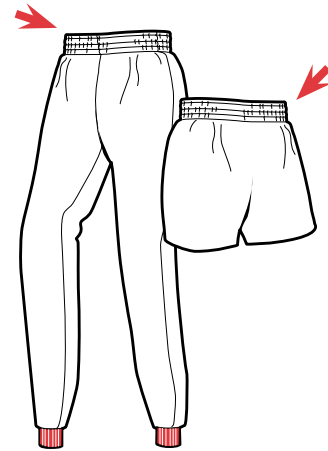
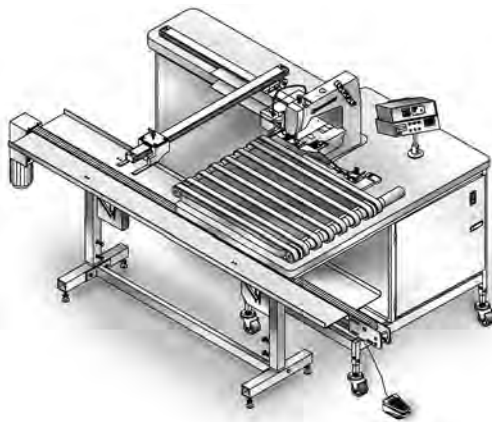
Atlanta Attachment, Miami
2007 NW 79th Avenue
Miami, FL 33122
(305) 559-2611
(305) 559-2566 FAX

SANTA ANA, CA

Atlanta Attachment, West
608 East 4th St
Santa Ana, CA 92701
(714) 953-7680
(714) 953-1042 FAX

15**Model 350-50****New**

Automatic Clean Finish Elastic Waistband Station w/ Fold-in-Half Stacker



Tunnel Elastic Waistband Station

- Deskills difficult operation
- Auto start-stop
- Auto cut apart
- Automatic fold-in-half stacker
- Parts ready for next operation
- Electronic controls
- Electronic elastic metering
- Automatic piece work counter

DESCRIPTION

An electro-pneumatic clean finish waistband station consisting of a multi needle sewing machine, motor, stand, spiral elastic guide 350-12, three blade rotary knife (for cut apart) and variable speed conveyor and electronic metering device with fold-in-half stacker.

OPERATION

The operator presents the flat garment to the edge guide and into the spiral folder. An electric eye senses the leading edge and starts the sew cycle. The operator holds the garment against the edge guide until completely into the folder. The electric eye senses the trailing edge and stops the sew cycle leaving the proper spacing for the next garment to eliminate waste. The operator then picks up the next garment and repeats. The conveyor will carry pieces to the knife for automatic cut apart and then to the rear fold-in-half mechanism and stacker. This unit folds, sews and cuts garments apart and prepares parts for the next operation.

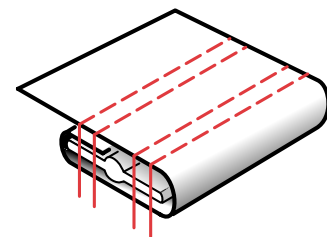
MACHINE CLASS

Most industrial multi-needle chainstitch machines. (Special gauge parts are available)

OPTIONS

(Components may be purchased separately)

- Spiral elastic guide and folder
- Variable speed metering device
- Three blade knife (cut apart)
- Conveyor length 40" (60" available)
- Thread break detectors
- Elastic detectors



This equipment is protected by one or more of the following patents: 4,644,883; 4,038,933; 5,203,270; 5,159,889; 5,134,947; 4,886,005; 4,432,294; 4,280,421; 4,466,367; 5,307,750; 5,437,238. Other U.S. and Foreign Patents Pending.

CORPORATE & MFG

Atlanta Attachment Company
401 Industrial Park Drive
Lawrenceville, GA 30245
(770) 963-7369
(770) 963-7641 FAX

INTERNATIONAL

Atlanta Attachment International
401 Industrial Park Drive
Lawrenceville, GA 30245
(770) 995-7395
(770) 963-7641 FAX

MIAMI, FLA

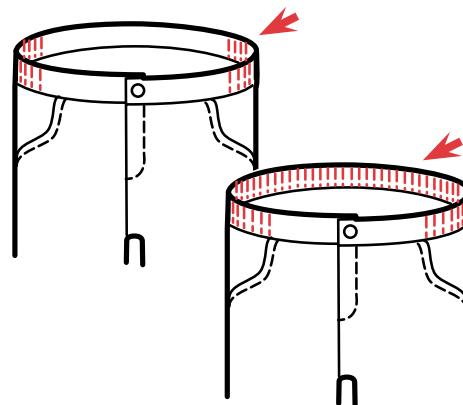
Atlanta Attachment, Miami
2007 NW 79th Avenue
Miami, FL 33122
(305) 559-2611
(305) 559-2566 FAX

SANTA ANA, CA

Atlanta Attachment, West
608 East 4th St
Santa Ana, CA 92701
(714) 953-7680
(714) 953-1042 FAX

16

Model 425-14 Spot Elastic Waistbands



Side Spot • Half Elastic Waistbands

- Eliminates elastic handling
- Insert and meter automatically
- Cut and reinsert on command
- 3" spot to full back capability
- Adaptable for most machines
- Pneumatic or electronic controls
- Elastic width up to 2"

DESCRIPTION

A semi-automatic device designed to produce a spot or partial elastic waistband. The unit consists of upper and lower folders, or upper downturn hemmer and lower cover band folder, elastic feed and tension mechanism, and elastic cutting knife. Elastic may be inserted between two piece waistband or top downturn hemmer and bottom band. Seven different configurations are available.

OPERATION

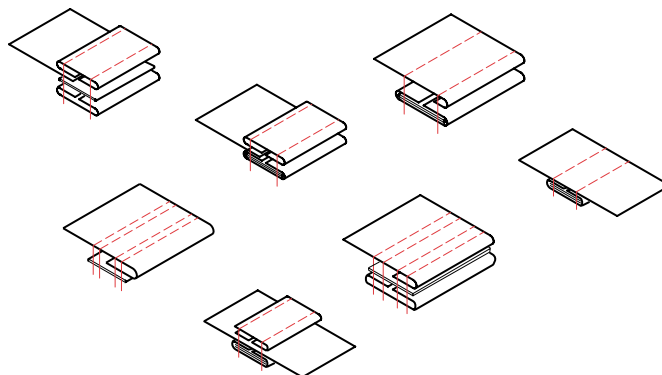
The operator heels the treadle to lift the presser foot, presents the garment under the foot and sews to a predetermined point (notch, mark, pocket hem, etc.), pressing the knee switch activates the feed cycle which momentarily lifts the presser foot and tension bar for elastic insertion. As sewing continues the elastic is automatically metered. As the point where gathering is to end is neared (approximately 2 inches), touching the toe switch cuts the elastic, continuation of sew draws the elastic from the metering device as the flat band is completed. Side spot of 3" to full pocket to pocket elastic is attainable.

MACHINE CLASS

Most industrial multi-needle machines.

OPTIONS

Garment cut apart knife, partial or fully automated with electronic motor and controls.



This equipment is protected by one or more of the following patents: 4,644,883; 4,038,933; 5,203,270; 5,159,889; 5,134,947; 4,886,005; 4,432,294; 4,280,421; 4,466,367; 5,307,750; 5,437,238. Other U.S. and Foreign Patents Pending.

CORPORATE & MFG

Atlanta Attachment Company
401 Industrial Park Drive
Lawrenceville, GA 30245
(770) 963-7369
(770) 963-7641 FAX

INTERNATIONAL

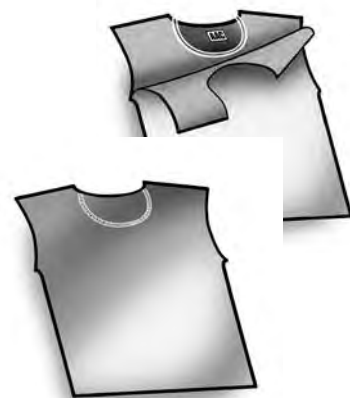
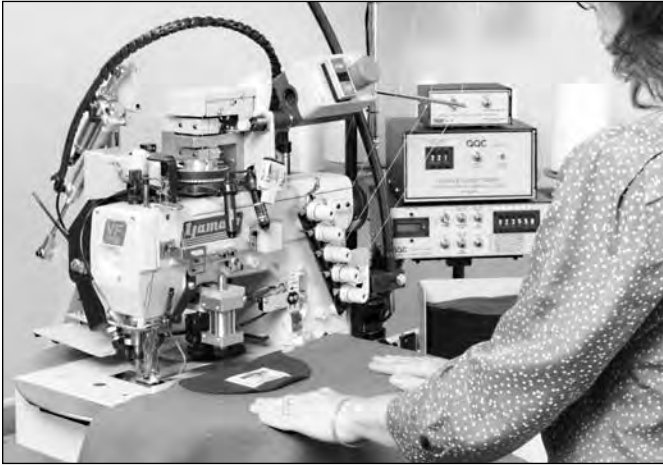
Atlanta Attachment International
401 Industrial Park Drive
Lawrenceville, GA 30245
(770) 995-7395
(770) 963-7641 FAX

MIAMI, FLA

Atlanta Attachment, Miami
2007 NW 79th Avenue
Miami, FL 33122
(305) 559-2611
(305) 559-2566 FAX

SANTA ANA, CA

Atlanta Attachment, West
608 East 4th St
Santa Ana, CA 92701
(714) 953-7680
(714) 953-1042 FAX

Locker Patch Setting Station**Automatic Locker Patch Setting Station**

- Auto semi-circular sewing
- Prime stacking capability
- Electronic controls
- Automatic thread trimming

DESCRIPTION

An electronically controlled sewing station to set semi-circular patches to the back of sweatshirts.

OPERATION

An operator places the back of the shirt (fleece up) on the work plate, then places the semi-circular locker patch on top. The parts are then moved to the laser locator lights and a touch of the start sensor initiates the automatic sew cycle. A rotating clamp and electronic guidance sew the patch to the shirt as the garment is rotated to the rear of the station. At the end of sew the thread is trimmed and the finished piece is stacked. The operator prepares the next piece during the automatic sew cycle.

This equipment is protected by one or more of the following patents: 4,644,883; 4,038,933; 5,203,270; 5,159,889; 5,134,947; 4,886,005; 4,432,294; 4,280,421; 4,466,367; 5,307,750; 5,437,238. Other U.S. and Foreign Patents Pending.

CORPORATE & MFG**Atlanta Attachment Company**

401 Industrial Park Drive
Lawrenceville, GA 30245
(770) 963-7369
(770) 963-7641 FAX

INTERNATIONAL**Atlanta Attachment International**

401 Industrial Park Drive
Lawrenceville, GA 30245
(770) 995-7395
(770) 963-7641 FAX

MIAMI, FLA**Atlanta Attachment, Miami**

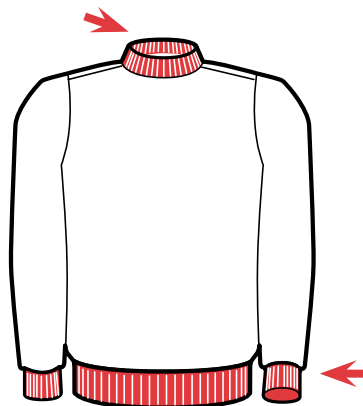
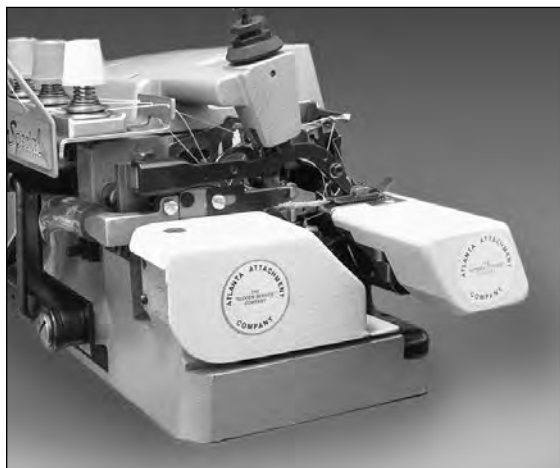
2007 NW 79th Avenue
Miami, FL 33122
(305) 559-2611
(305) 559-2566 FAX

SANTA ANA, CA**Atlanta Attachment, West**

608 East 4th St
Santa Ana, CA 92701
(714) 953-7680
(714) 953-1042 FAX

18

Model 1276U Cylinder Arm Conversion Kit



Reduced stress while sewing small circular parts

- Easier alignment
- Relieves stress
- Lowers skill requirements
- Evenly distributes gather around the waist of the garment
- Faster

DESCRIPTION

Unit includes cylinder bed knife block, feed dogs and all other parts necessary for the conversion. In-plant installation with no sewing head modification.

OPERATION

Eliminates the ergonomic concerns in sewing small circular parts.

MACHINE CLASS

Union Special 39500

OPTIONS

- Cuff and collar pneumatic expansion rollers
- Cuffs, collars and bottom bands adjustable rollers
- Heavy duty large waistband guide rollers with offset tabling.

This equipment is protected by one or more of the following patents: 4,644,883; 4,038,933; 5,203,270; 5,159,889; 5,134,947; 4,886,005; 4,432,294; 4,280,421; 4,466,367; 5,307,750; 5,437,238. Other U.S. and Foreign Patents Pending.

CORPORATE & MFG

Atlanta Attachment Company
401 Industrial Park Drive
Lawrenceville, GA 30245
(770) 963-7369
(770) 963-7641 FAX

INTERNATIONAL

Atlanta Attachment International
401 Industrial Park Drive
Lawrenceville, GA 30245
(770) 995-7395
(770) 963-7641 FAX

MIAMI, FLA

Atlanta Attachment, Miami
2007 NW 79th Avenue
Miami, FL 33122
(305) 559-2611
(305) 559-2566 FAX

SANTA ANA, CA

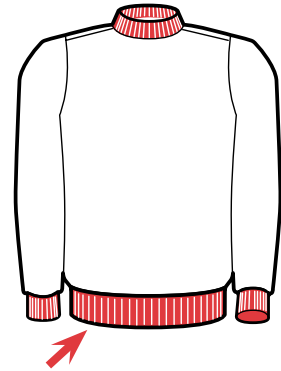
Atlanta Attachment, West
608 East 4th St
Santa Ana, CA 92701
(714) 953-7680
(714) 953-1042 FAX

19

Model 1278-6

New

Automatic Rib Knit Bottom Band Setting Station



Circular Rib Knit Bottom Band Workstation

- Tandem operation
- Reduces ergonomic risk
- Minimizes fabric waste
- Uniform gathering
- Automatic guidance
- Automatic stack
- Increased production
- Production counter

DESCRIPTION

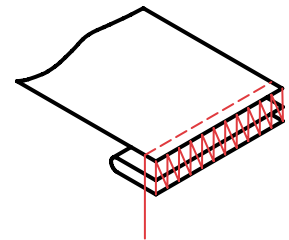
An automatic workstation for sewing circular rib knit bottom bands on sweaters, sweat shirts, etc. This unit incorporates a cylinder arm overlock sewing head with vacuum thread trimmer, electronic controls, automatic guidance with multiple edge sewing and pneumatic expansion rollers and automatic stacker.

OPERATION

The operator folds the circular rib knit piece in half to form a band and places it over the expansion guide rollers. The rollers automatically expand for loading the body. The body is loaded over the rollers and band and a touch of the start sensor expands the rollers to sew position and indexes the parts under the presser foot and sew begins. The operator is free to load a second station. When the finished seam is sensed the parts are oversewn a predetermined distance, thread chain is cut, and the part is automatically stacked.

MACHINE CLASS

Yamato AZ8403
Pegasus
Juki



This equipment is protected by one or more of the following patents: 4,644,883; 4,038,933; 5,203,270; 5,159,889; 5,134,947; 4,886,005; 4,432,294; 4,280,421; 4,466,367; 5,307,750; 5,437,238. Other U.S. and Foreign Patents Pending.

CORPORATE & MFG

Atlanta Attachment Company
401 Industrial Park Drive
Lawrenceville, GA 30245
(770) 963-7369
(770) 963-7641 FAX

INTERNATIONAL

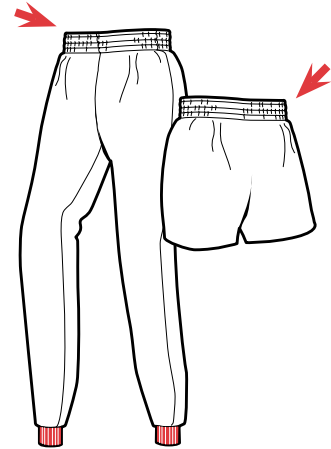
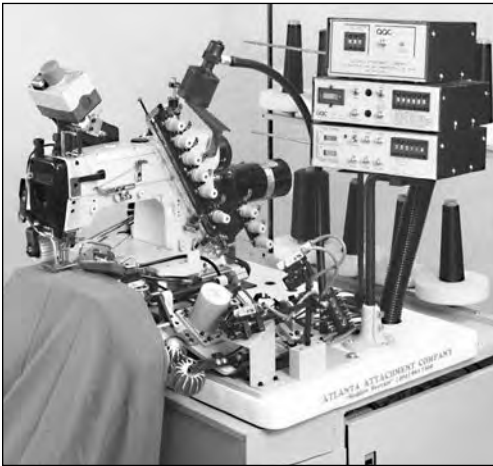
Atlanta Attachment International
401 Industrial Park Drive
Lawrenceville, GA 30245
(770) 995-7395
(770) 963-7641 FAX

MIAMI, FLA

Atlanta Attachment, Miami
2007 NW 79th Avenue
Miami, FL 33122
(305) 559-2611
(305) 559-2566 FAX

SANTA ANA, CA

Atlanta Attachment, West
608 East 4th St
Santa Ana, CA 92701
(714) 953-7680
(714) 953-1042 FAX

20**Model 1278-7****New****Automatic Circular Elastic Waistband Setting Station****Automatic Circular Elastic Waistband Station (Imitation Tunnel)**

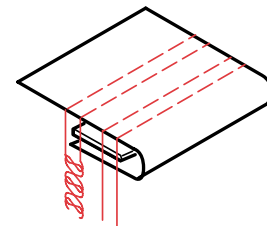
- Single operation
- Electronic controls
- Active electronic edge guidance
- Consistent uniform gathering
- Tandem operation
- Reduces ergonomic risk
- Automatic size control

DESCRIPTION

An electronically controlled workstation for sewing circular elastic loops into a circular garment such as sweat pants in a single operation. This unit consists of a multi-needle chain / coverstitch sewing head with left hand fabric trimmer. A unique edge guiding system, (patent pending) fabric folding system, elastic guides and automatic expansion rollers for size control.

OPERATION

A preclosed elastic loop is loaded over the compensating rollers and under the presser foot. The rollers automatically expand for garment loading. The garment is loaded over the rollers and on top of the elastic loop and a touch of the start sensor initiates the automatic sew cycle. The operator is free to load a second station. The garment and loop are indexed to fold the garment over the loop and sewing begins. When the sewn seam is sensed the folder opens, the part is oversewn and stops, the thread is trimmed and the piece is automatically stacked. The operator is free to load a second unit during the automatic cycle.



This equipment is protected by one or more of the following patents: 4,644,883; 4,038,933; 5,203,270; 5,159,889; 5,134,947; 4,886,005; 4,432,294; 4,280,421; 4,466,367; 5,307,750; 5,437,238. Other U.S. and Foreign Patents Pending.

CORPORATE & MFG**INTERNATIONAL****MIAMI, FLA****SANTA ANA, CA****Atlanta Attachment Company**

401 Industrial Park Drive
Lawrenceville, GA 30245
(770) 963-7369
(770) 963-7641 FAX

Atlanta Attachment International

401 Industrial Park Drive
Lawrenceville, GA 30245
(770) 995-7395
(770) 963-7641 FAX

Atlanta Attachment, Miami

2007 NW 79th Avenue
Miami, FL 33122
(305) 559-2611
(305) 559-2566 FAX

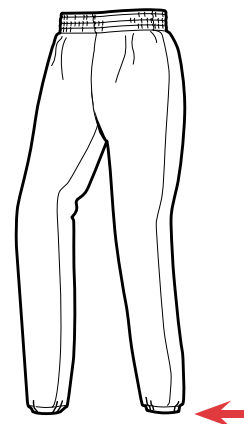
Atlanta Attachment, West

608 East 4th St
Santa Ana, CA 92701
(714) 953-7680
(714) 953-1042 FAX

21

Model 1536

Automatic Elastic Leg Hemming Station



Sweat Pant Legs

- Automatic start/stop
- Electronic eye control
- Ergonomic design
- Air assisted folder
- Automatic cut apart
- High production
- Eliminates elastic waste

DESCRIPTION

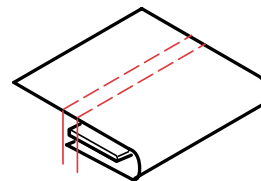
An electro-pneumatic device consisting of a variable speed puller, an impact type cutter controlled by a single retro-reflective eye, and a belt conveyor positioned to the side of the presser foot. This unit is designed to automatically cut raw rubber or narrow elastic between garment parts such as sweat pant legs. Automatic start and stop control reduces waste between pieces.

OPERATION

The operator presents the material through a downturn hemmer and under the presser foot and depresses the machine treadle to sew. Each successive part is sewn with minimal gap to reduce elastic or rubber waste. The variable speed puller runs faster than the sewing speed and creates a larger gap. The retro-reflective eye senses the leading edge of each part and automatically cycles the impact cutter to separate the parts. The side conveyor carries the leading edge to the puller and prevents the gathered material from jamming. The 1536 includes automatic stop and start to minimize elastic between pieces and ergonomically designed tabling for stand up operation.

MACHINE CLASS

Most industrial machines.



This equipment is protected by one or more of the following patents: 4,644,883; 4,038,933; 5,203,270; 5,159,889; 5,134,947; 4,886,005; 4,432,294; 4,280,421; 4,466,367; 5,307,750; 5,437,238. Other U.S. and Foreign Patents Pending.

CORPORATE & MFG

Atlanta Attachment Company

401 Industrial Park Drive
Lawrenceville, GA 30245
(770) 963-7369
(770) 963-7641 FAX

INTERNATIONAL

Atlanta Attachment International

401 Industrial Park Drive
Lawrenceville, GA 30245
(770) 995-7395
(770) 963-7641 FAX

MIAMI, FLA

Atlanta Attachment, Miami

2007 NW 79th Avenue
Miami, FL 33122
(305) 559-2611
(305) 559-2566 FAX

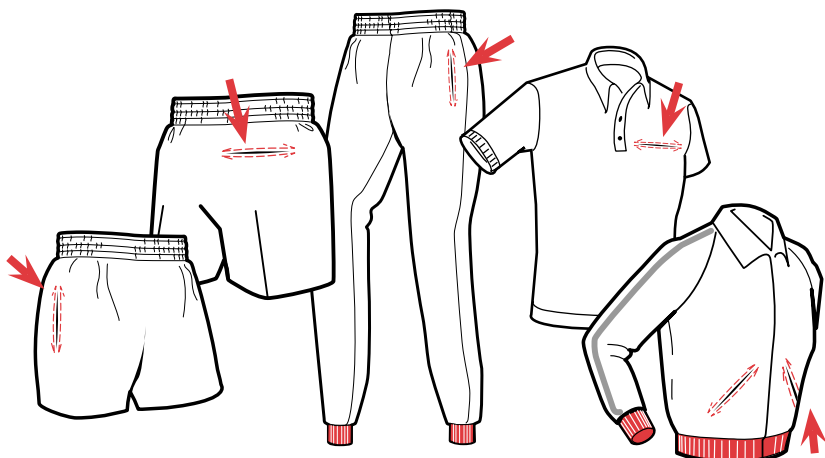
SANTA ANA, CA

Atlanta Attachment, West

608 East 4th St
Santa Ana, CA 92701
(714) 953-7680
(714) 953-1042 FAX

22

Model 1800P Programmable Center Knife Gauge Set



- Pocketed knit jackets
- Knit shorts
- Sweat pants
- Placket front shirts
- Back pocket on knit shorts

DESCRIPTION

A retrofit Gauge Set with movable center knife to facilitate the cutting of pocket opening in panel and pocketing material. Knife begins to cut in front of sewing stitches and moves to the rear of the needles during the sew cycle. This differential in sew length versus cut length may be changed as desired.

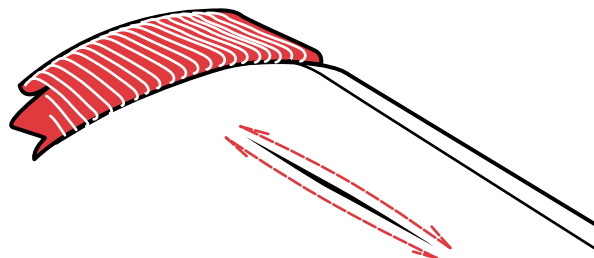
OPERATION

The operator places garment panel and pocketing material under presser foot, presses sewing treadle to begin sew cycle, the knife automatically shifts to the rear position after the beginning back tack is completed. The knife is reset to the front position upon completion of the finished sew cycle, thread trim and foot lift. A machine equipped with stitch count capability will allow the operator to press the treadle once to complete the cycle automatically.

MACHINE CLASS

Juki - 1152 & 1178
Brother - LT2B832 & LT2B842
Mitsubishi - LOT2-230 & LT2-2230
Pfaff - 442 & 1442
Durkopp - 244

1/4" - 5/16" - 3/8" - Specials on request



This equipment is protected by one or more of the following patents: 4,644,883; 4,038,933; 5,203,270; 5,159,889; 5,134,947; 4,886,005; 4,432,294; 4,280,421; 4,466,367; 5,307,750; 5,437,238. Other U.S. and Foreign Patents Pending.

CORPORATE & MFG

Atlanta Attachment Company
401 Industrial Park Drive
Lawrenceville, GA 30245
(770) 963-7369
(770) 963-7641 FAX

INTERNATIONAL

Atlanta Attachment International
401 Industrial Park Drive
Lawrenceville, GA 30245
(770) 995-7395
(770) 963-7641 FAX

MIAMI, FLA

Atlanta Attachment, Miami
2007 NW 79th Avenue
Miami, FL 33122
(305) 559-2611
(305) 559-2566 FAX

SANTA ANA, CA

Atlanta Attachment, West
608 East 4th St
Santa Ana, CA 92701
(714) 953-7680
(714) 953-1042 FAX

23

Model 1907A Placket Shirt Collar Set & Tape



Fashion Knit Collar Set & Tape Attachment

DESCRIPTION

A clean finish taping folder mounted to a safety stitch type machine behind the edge trimming knife. This folder, combined with a scissor type cutter, allows the collar seam to be taped as the collar is set. Topstitching the tape and hanging the label in a separate operation produces a flat, uniform collar seam.

OPERATION

An operator aligns the collar to the shirt and folds the placket over the collar. The shirt is sewn with a single needle 401 stitch to the point where the leading edge is at the tape cutter and the operator touches a knee switch to actuate the cut-apart. Sew continues and the placket is folded over the trailing end of the collar. The tape is cut as sew is completed.

MACHINE CLASS

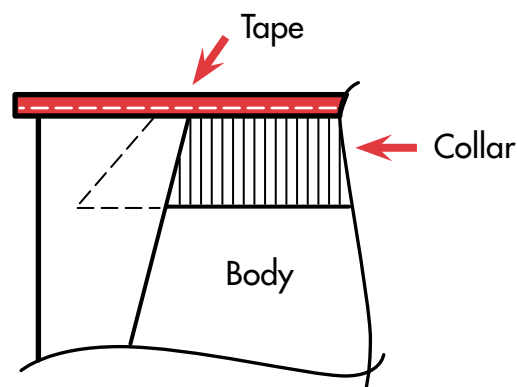
Modified industrial safety stitch machines.

OPTIONS

Automatic tape cutter

OTHER MODELS

273-4



This equipment is protected by one or more of the following patents: 4,644,883; 4,038,933; 5,203,270; 5,159,889; 5,134,947; 4,886,005; 4,432,294; 4,280,421; 4,466,367; 5,307,750; 5,437,238. Other U.S. and Foreign Patents Pending.

CORPORATE & MFG

Atlanta Attachment Company
401 Industrial Park Drive
Lawrenceville, GA 30245
(770) 963-7369
(770) 963-7641 FAX

INTERNATIONAL

Atlanta Attachment International
401 Industrial Park Drive
Lawrenceville, GA 30245
(770) 995-7395
(770) 963-7641 FAX

MIAMI, FLA

Atlanta Attachment, Miami
2007 NW 79th Avenue
Miami, FL 33122
(305) 559-2611
(305) 559-2566 FAX

SANTA ANA, CA

Atlanta Attachment, West
608 East 4th St
Santa Ana, CA 92701
(714) 953-7680
(714) 953-1042 FAX

24

Model 3800P Automatic Set-In Pocket Workstation



Sweat Pants • Knit Shorts

- Automatic parts transfer
- Automatic sizing
- Automatic undertrimming
- Automatic stacking
- Quality pockets
- Simultaneous loading & sewing

DESCRIPTION

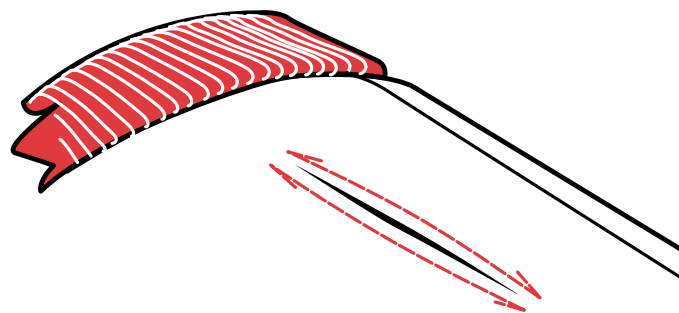
An automatic station consisting of two-needle lockstitch sewing head with undertrimmer and programmable center knife gauge set. This unit features electronic controls and automatic garment transfer which allows simultaneous loading and sewing.

OPERATION

The part to be sewn, leg panel, shirt front, etc., is laid up and positioned to laser target lights. The pocketing is then laid on top of the panel and positioned to another set of lights. Depressing the start switch energizes the automatic cycle which transfers the parts to the sewing machine. The parts are then sewn, the thread is trimmed and the completed panel is stacked. The operator loads subsequent pieces during the sew cycle.

MACHINE CLASS

Mitsubishi LT2-2230, Juki 1152



This equipment is protected by one or more of the following patents: 4,644,883; 4,038,933; 5,203,270; 5,159,889; 5,134,947; 4,886,005; 4,432,294; 4,280,421; 4,466,367; 5,307,750; 5,437,238. Other U.S. and Foreign Patents Pending.

ATLANTA, GA

Atlanta Attachment Company
401 Industrial Park Drive
Lawrenceville, GA 30245
(770) 963-7369
(770) 963-7641 FAX

INTERNATIONAL

Atlanta Attachment International
401 Industrial Park Drive
Lawrenceville, GA 30245
(770) 995-7395
(770) 963-7641 FAX

MIAMI, FLA

Atlanta Attachment, Miami
2007 NW 79th Avenue
Miami, FL 33122
(305) 559-2611
(305) 559-2566 FAX

SANTA ANA, CA

Atlanta Attachment, West
608 East 4th St
Santa Ana, CA 92701
(714) 953-7680
(714) 953-1042 FAX



This equipment is protected by one or more of the following patents: 4,644,883; 4,038,933; 5,203,270; 5,159,889; 5,134,947; 4,886,005; 4,432,294; 4,280,421; 4,466,367; 5,307,750; 5,437,238. Other U.S. and Foreign Patents Pending.

SANTA ANA, CA

Atlanta Attachment, West
608 East 4th St
Santa Ana, CA 92701
(714) 953-7680
(714) 953-1042 FAX



"Sudden Service"

Location & Directions

To ATLANTA ATTACHMENT

From Atlanta Hartsfield Airport by Car

Take 1-85 North; go approximately 40 miles and turn right on Exit 41, Hwy. 316. Go to second traffic light on 316 and turn right on Hwy. 20. Go to first traffic light and turn left on Hurricane Shoals Road. Go to first street on right and turn right on Hosea Road. Atlanta Attachment is located on the right at the corner of Hosea Road and Industrial Park Drive.

From 1-85 North

From 1-85 North, take Exit 41, Hwy. 316, and go to second traffic light on 316 and turn right on Hwy. 20. Go to the next traffic light and turn left on Hurricane Shoals Road. Go to first street on right turn right on Hosea Road. Atlanta Attachment is located on the right at the corner of Hosea and Industrial Park Dr.

From 1-20 East

From 1-20, take Exit 46, Hwy. 142 North. Hwy. 142 will dead end on Hwy. 81 North. Turn right on Hwy. 81 North. Go to Hwy. 78 and turn left. Go to the next traffic light on Hwy. 78 and turn right on Hwy. 20 North. Follow Hwy. 20 into Lawrenceville. Turn right on Hwy. 124. Hwy. 124 will dead end on Hwy. 29. Turn right on Hwy. 29 and go approximately 1 mile and turn left on Hosea Road. Atlanta Attachment will be on the left at the corner of Hosea and Industrial Park Drive.

TRANSPORTATION

EXPRESS SERVICE

AAA Express, Inc. Ph. 404-767-2000

Departs airport every hour between 7 A.M. and 5 P.M., every 30 minutes between 5:30 P.M. and 11:30 P.M.

Cost: One way fare: \$18.00
Round trip fare: \$30.00

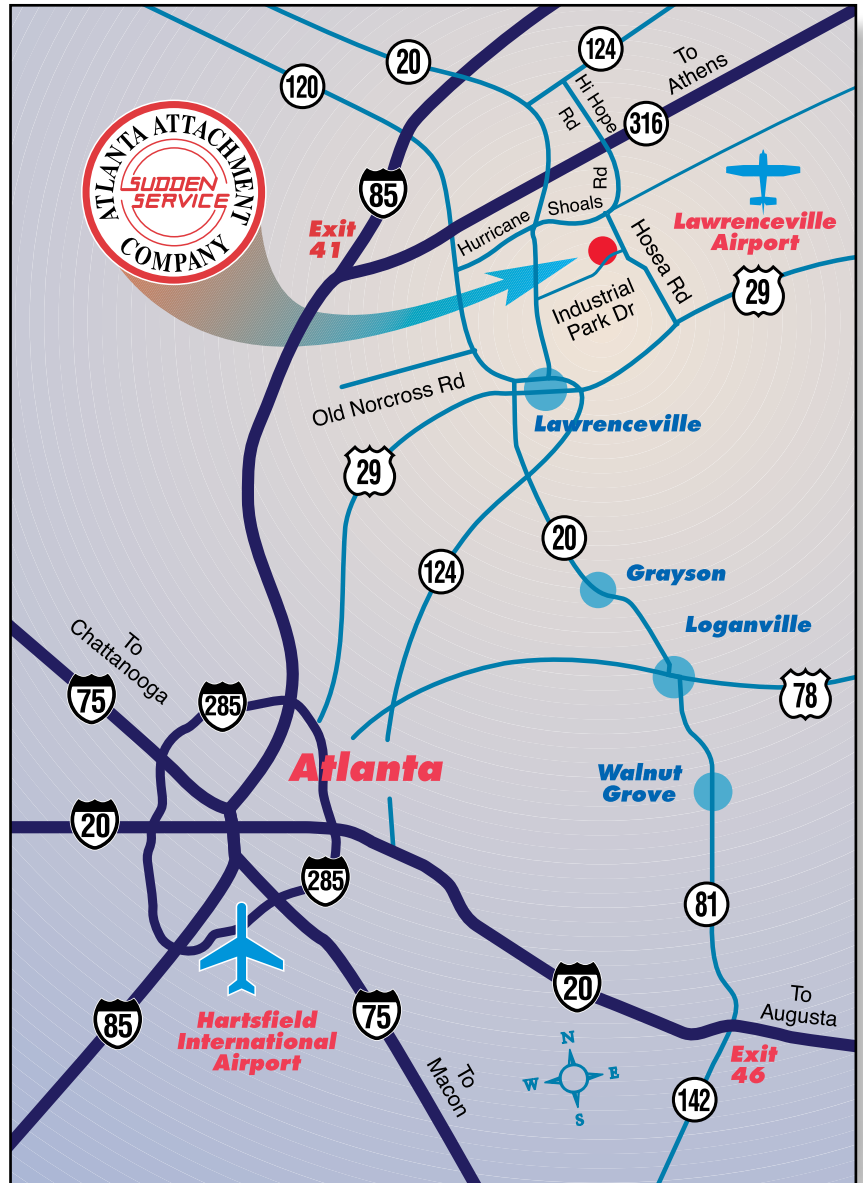
LIMO SERVICE

Will pick up at your gate.

Mark Anthony's VIP Trans. Svc. .. Ph. 770-960-1651
800-457-1996

Cost: Stretch Limo \$65.00
Sedan \$52.00

ATLANTA DIRECTIONS



CORPORATE & MFG

Atlanta Attachment Company
401 Industrial Park Drive
Lawrenceville, GA 30245
(770) 963-7369
(770) 963-7641 FAX

INTERNATIONAL

Atlanta Attachment International
401 Industrial Park Drive
Lawrenceville, GA 30245
(770) 995-7395
(770) 963-7641 FAX

MIAMI, FLA

Atlanta Attachment, Miami
2007 NW 79th Avenue
Miami, FL 33122
(305) 559-2611
(305) 559-2566 FAX

SANTA ANA, CA

Atlanta Attachment, West
608 East 4th St
Santa Ana, CA 92701
(714) 953-7680
(714) 953-1042 FAX