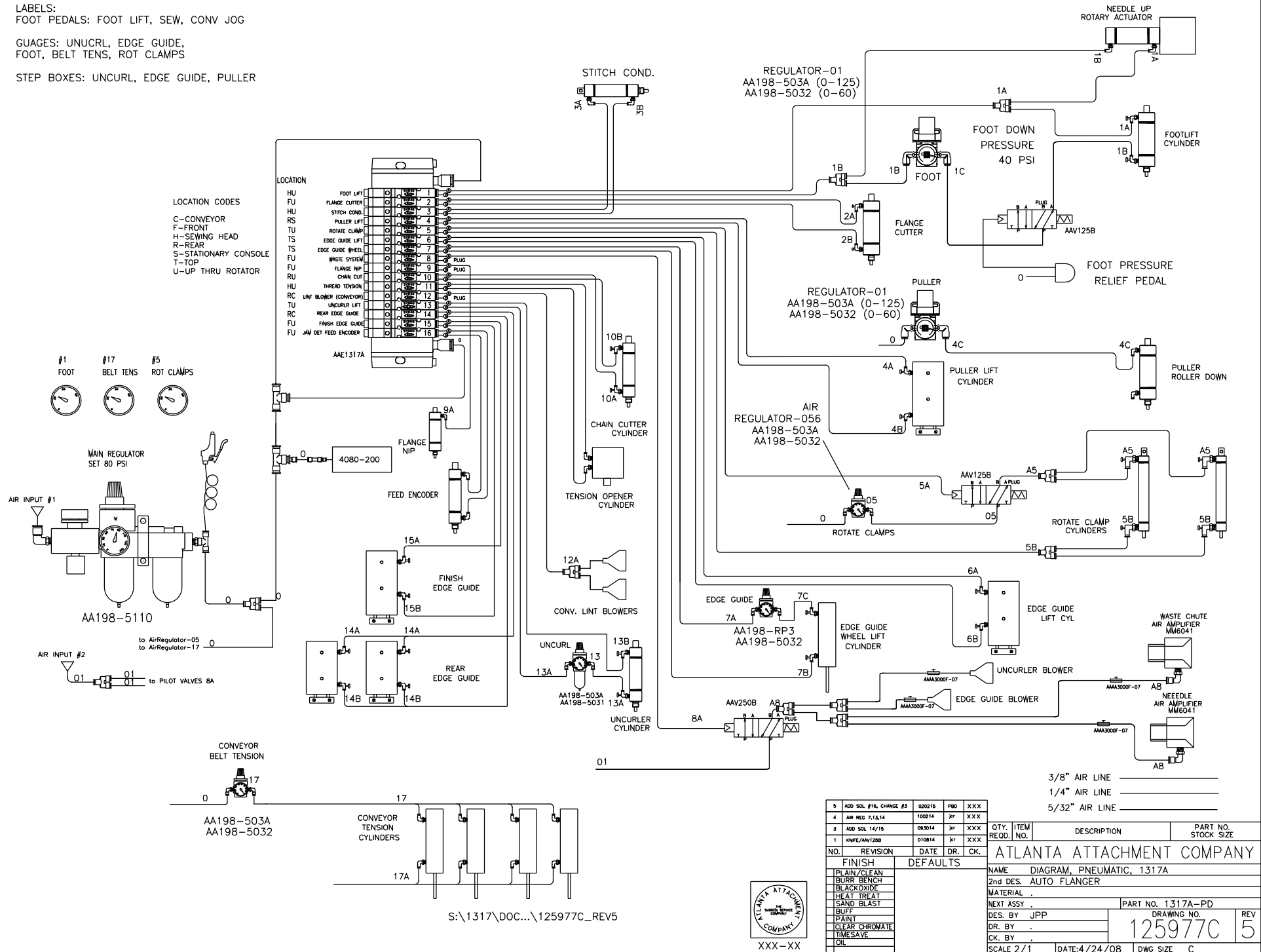


LABELS:
 FOOT PEDALS: FOOT LIFT, SEW, CONV JOG

GUAGES: UNUCRL, EDGE GUIDE,
 FOOT, BELT TENS, ROT CLAMPS

STEP BOXES: UNCURL, EDGE GUIDE, PULLER



| NO. | REVISION | DATE | DR. | CK. |
|-----|------------------------|--------|-----|-----|
| 5 | ADD SOL #16, CHANGE #3 | 020215 | PRD | XXX |
| 4 | AIR REG 7,13,14 | 100214 | JR | XXX |
| 3 | ADD SOL 14/15 | 083014 | JR | XXX |
| 1 | HWFE/AAV125B | 010814 | JR | XXX |

| QTY. | ITEM RECD. NO. | DESCRIPTION | PART NO. STOCK SIZE |
|------|----------------|--------------------------------|-------------------------|
| | | ATLANTA ATTACHMENT COMPANY | |
| | | NAME DIAGRAM, PNEUMATIC, 1317A | |
| | | 2nd DES. AUTO FLANGER | |
| | | MATERIAL | |
| | | NEXT ASSY. | |
| | | PART NO. 1317A-PD | REV |
| | | DES. BY JPP | DRAWING NO. 125977C |
| | | DR. BY | 5 |
| | | CK. BY | |
| | | SCALE 2/1 | DATE:4/24/08 DWG SIZE C |

S:\1317\DOC...\125977C_REV5



The materials contained herein are confidential and proprietary information of Atlanta Attachment Company. In addition to any confidentiality and non-disclosure obligations that currently exist between you and Atlanta Attachment Company, your use of these materials serves as an acknowledgment of the confidential and proprietary nature of these materials and your duty not to make any unauthorized use or disclosure of these materials.