

Images may include options.

## Semi-automatic Two-Needle Sleeve Hemmer

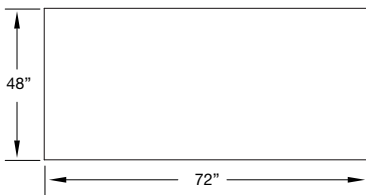
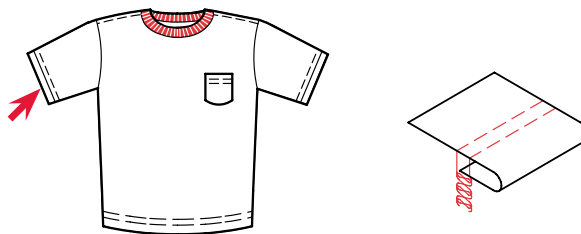
- Low Cost
- Simple to Operate
- Easy to Maintain
- Coverstitch does not ravel back
- Quality flat hems - No twist or roping
- Sewing head with top feed
- Two-or-three needle sewing head
- Sewing head with top feed and under-trimmer
- Sewing head with thread under-trimmer
- Auto Stacker
- Sewing head with puller and thread impact cutter
- Top coverstitch
- Two or three needle
- Electronic DC Motor

### OPERATION

The operator loads the sleeve under the presser foot. The machine starts and hems the sleeve. After hemming, the sleeve may be left in a chain or the thread can be cut and the sleeve stacked.

### OPTIONS

- **0211-300** Folder assembly 211M
- **211-KIT03** Thread tension release
- **211MKIT01** Vacuum chain remover
- **191297C** AAC, Blow gun & light
- **SP211M** Spare parts kit



Footprint

SPECIFICATIONS	
Voltage (v/ph/hz)	220v 1ph
Current (amps)	5
Air pressure (psi)	90
Air consumption (cfm)	19
Shipping weight (lbs)	950
Shipping dimensions (w/l/h, inch)	60 x 62 x 60

PRODUCTION	
Pieces per hour	1125

Depending on material and size of parts

www.atlatt.com • sales@atlatt.com

PATENTS: Our equipment may be covered by one or more patents. Please go to the following web page for an up-to-date patent list: [www.atlatt.com/patents.php](http://www.atlatt.com/patents.php)  
© 2018 Atlanta Attachment Co. 17168042718

362 Industrial Park Drive  
Lawrenceville, GA 30046 USA  
+1 (770) 963-7369 • FAX +1 (770) 963-7641



**Atlanta Attachment Company**

The Company that  
**Sudden Service**  
built