

Automatic Coverstitch Bottom Hemmer

Shirts may be tubular or with side seams

- Patented Serial Bus Control System
- Shirt may be hemmed first or last operation
- Tandem operation
- Automatic size control
- Perfectly aligned over-sew
- Electronic active edge guiding system
- 100% cotton thread max RPM

DESCRIPTION

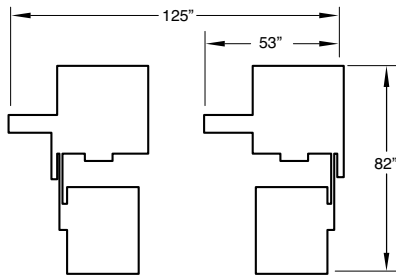
An electronically controlled workstation for hemming circular shirt bottoms. This unit incorporates a two-needle coverstitch sewing head with an optional left-hand knife with electro-pneumatic expansion rollers for size control, a state-of-the-art edge guiding system, a fabric folding system, and an automatic stacker.

OPERATION

A tubular or side-seamed body is loaded over the expansion rollers. When loaded, the rollers expand to the proper tension, indexes the shirt under the presser foot, and the sewing cycle is initiated. The operator is free to load a second station. The finished hem is sensed and perfectly oversewn (with stitch-condensing if desired). The threads are trimmed and the garment is automatically stacked.

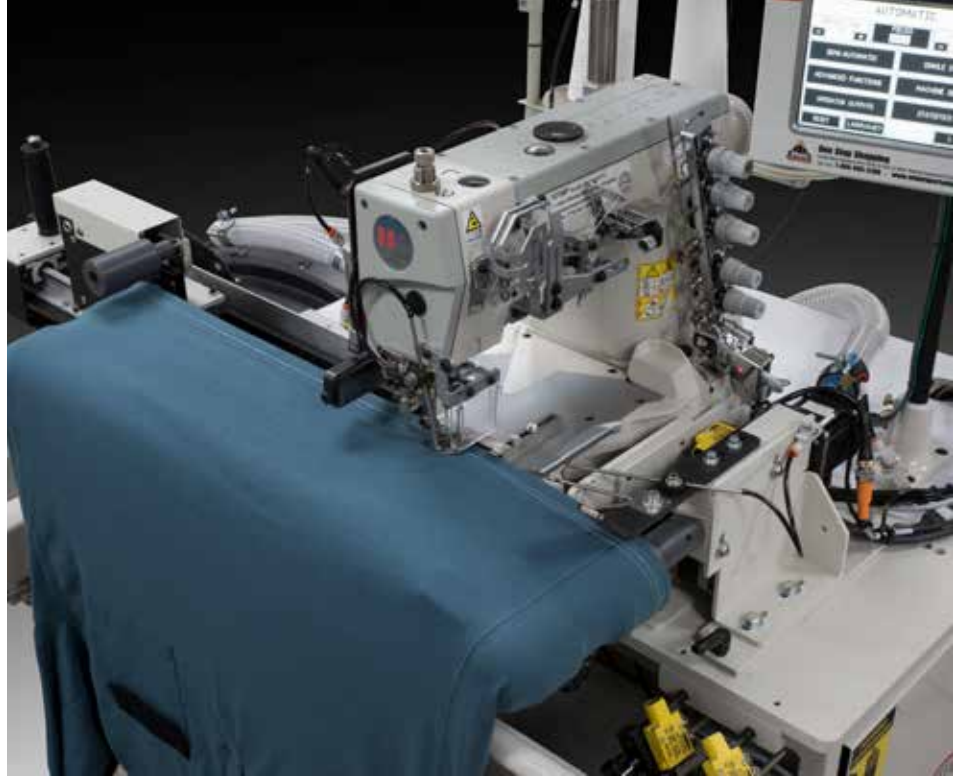
OPTIONS

- Stitch condenser
- Left-hand knife
- Top or bottom coverstitch
- Flip seam device
- Side seam recognition

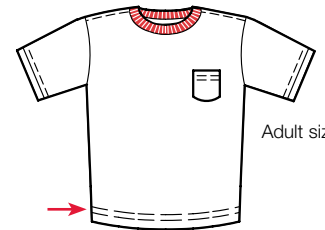


Footprint

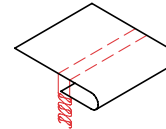
Images may include options.



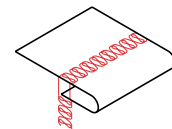
Patented Serial Bus Control System



Adult sizes



Plain Hem w/Bottom Cover



Plain Hem w/Top & Bottom Cover

SPECIFICATIONS

Voltage (v/ph/hz)	220v 1ph
Current (amps)	6.5
Air pressure (psi)	90
Air consumption (cfm)	15
Shipping weight (lbs)	890
Shipping dimensions (w/l/h, inch)	60 x 54 x 60

PRODUCTION

Pieces per hour	660
-----------------	-----

Depending on material and size of parts, based on tandem setup

www.atlatt.com • sales@atlatt.com

PATENTS: Our equipment may be covered by one or more patents. Please go to the following web page for an up-to-date patent list: www.atlatt.com/patents.php © 2018 Atlanta Attachment Co. 19151080719

362 Industrial Park Drive
Lawrenceville, GA 30046 USA
+1 (770) 963-7369 • FAX +1 (770) 963-7641



Atlanta Attachment Company

The Company that
Sudden Service
built